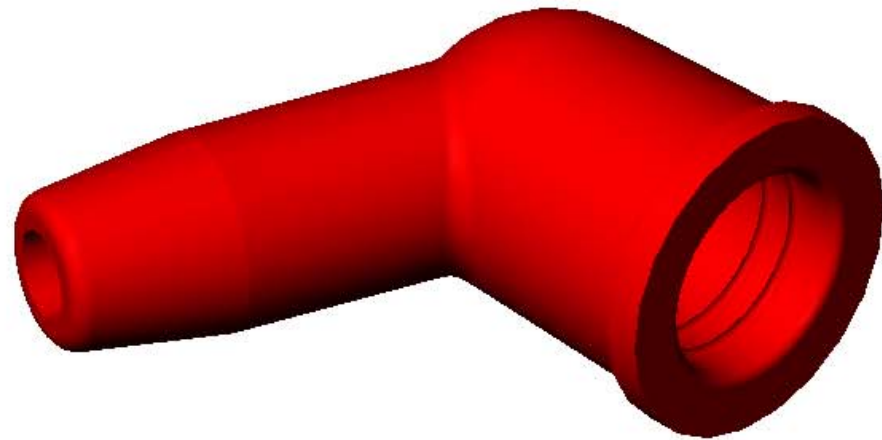
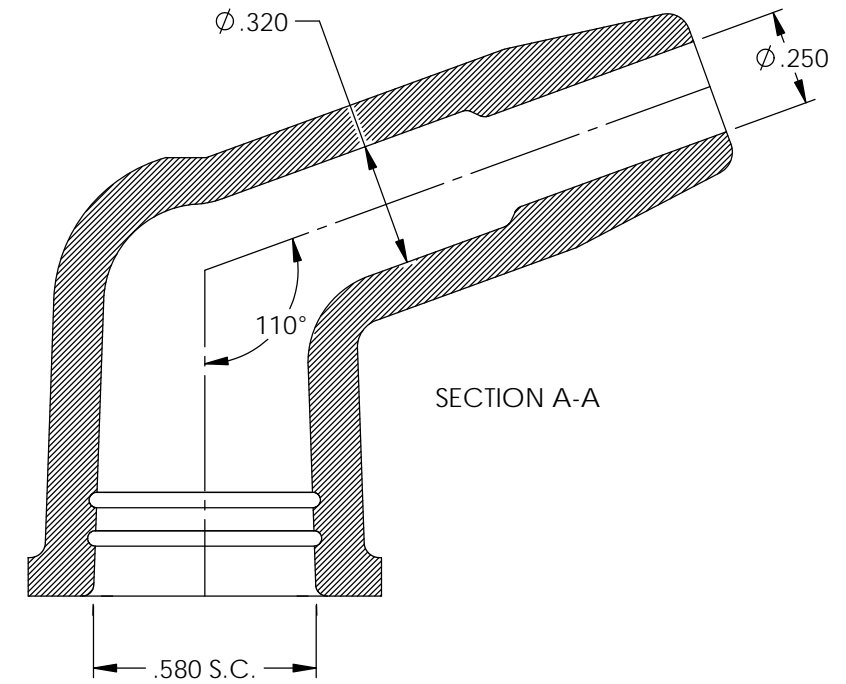
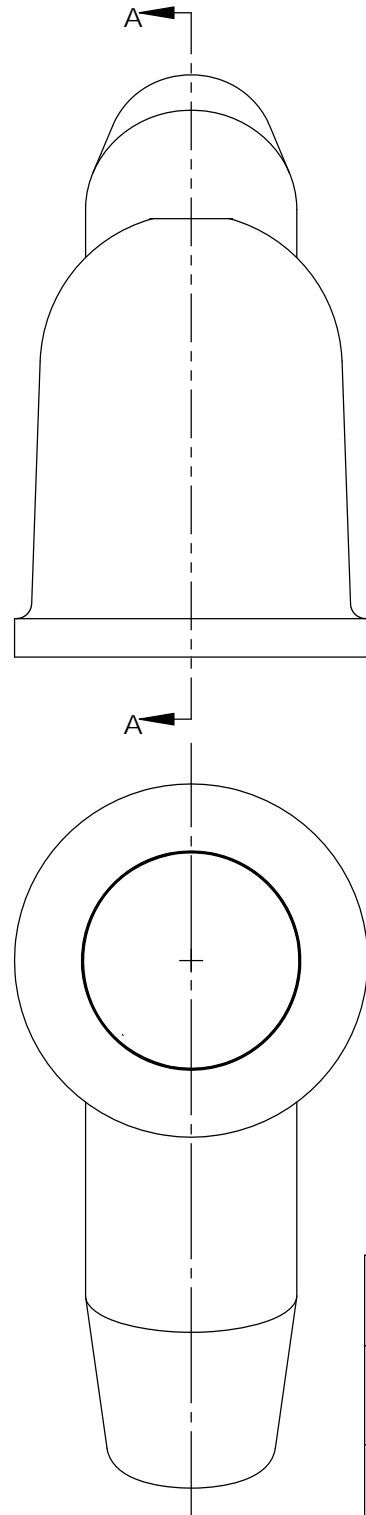
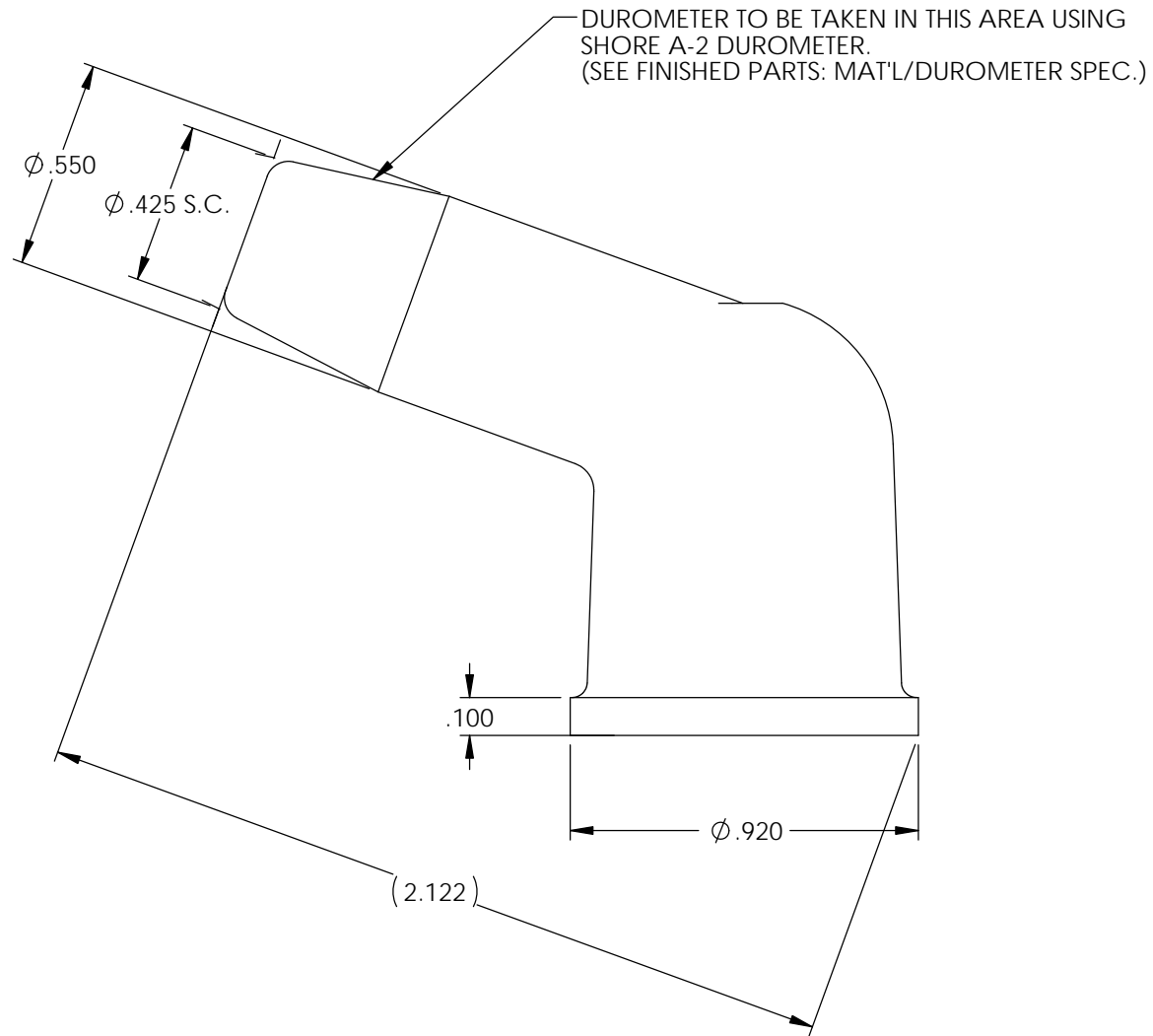


P/C	DESCRIPTION	MAT'L	COLOR	TEMPERATURE
16175	AB20-RS	SILICONE	RED	400°
18085	AB20-BS	SILICONE	BLACK	400°

NOTE: FOR MAXIMUM PERFORMANCE AND RELIABILITY, ALWAYS USE ETCO ENGINEERED IGNITION TERMINALS WITH ETCO AUTOMOTIVE INSULATORS.

Rev.	Description of Change/ SCN#	Date
1	Redrawn in SW from ACAD Org.Eng.Dwg.Date: 7/08/92	9/12/19



UNCONTROLLED COPY

<p>THIRD ANGLE PROJECTION TOLERANCES UNLESS OTHERWISE SPECIFIED</p> <p>INCHES: .XX - ±.030 .XXX - ±.015</p> <p>ANGLES: ±2°</p>	<p>TOOL NO.</p> <p>2180</p>	<p>Title: 110° Nipple Boot</p>			
	<p>ETCO</p>	<p>DO NOT SCALE DWG.</p>	<p>Drawn By: S.Johnson</p>	<p>Date: 9/12/19</p>	
		<p>ETCO Incorporated Engineered Products 25 Bellows Street Warwick, RI 02888 Phone: (401) 467-2400 Fax: (401) 467-9230 www.ETCO.com</p>	<p>Design Control By: ETCO</p>	<p>Scale: 2X</p>	<p>Size B</p>
		<p>Dwg. No.: AB20 cust</p>			