

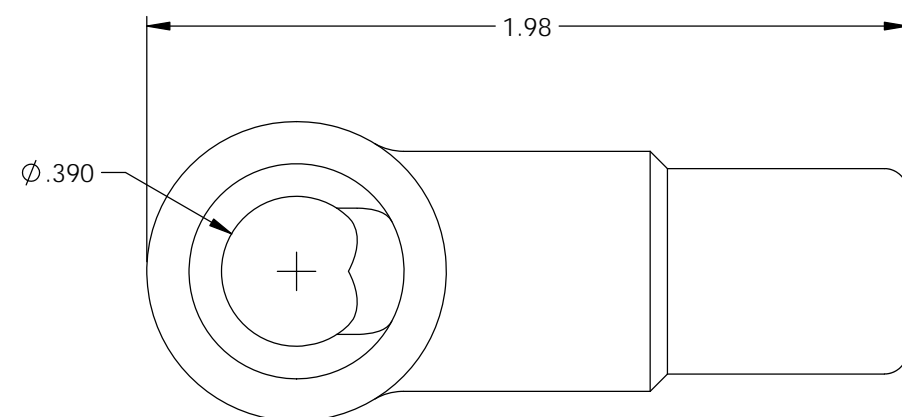
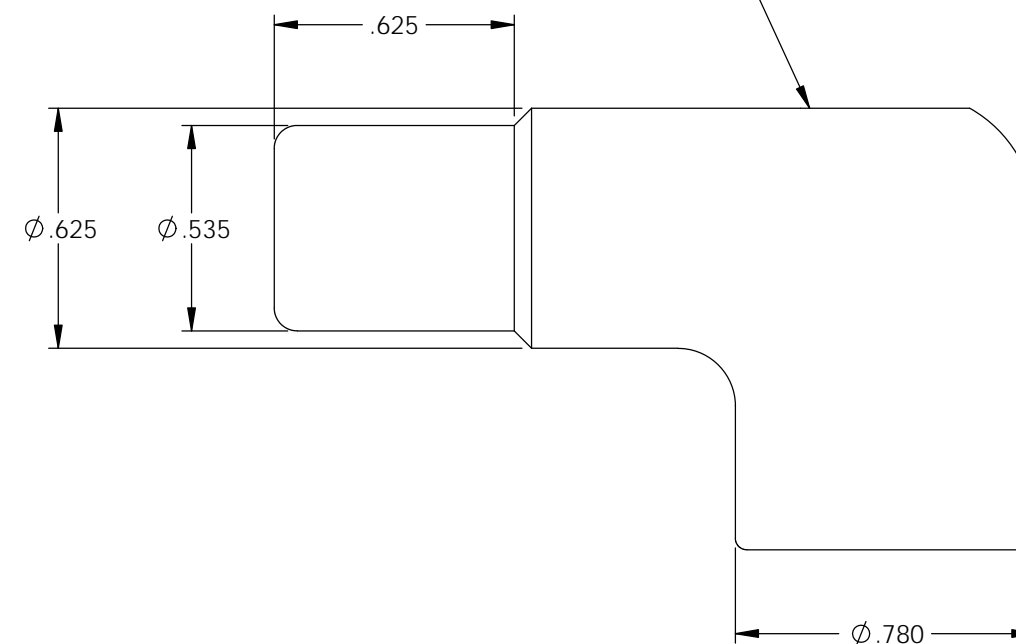
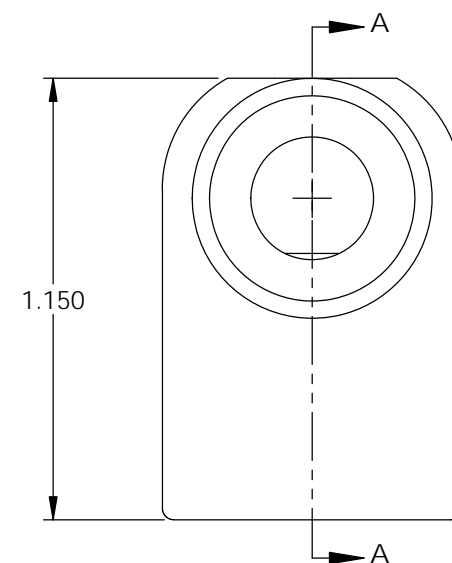
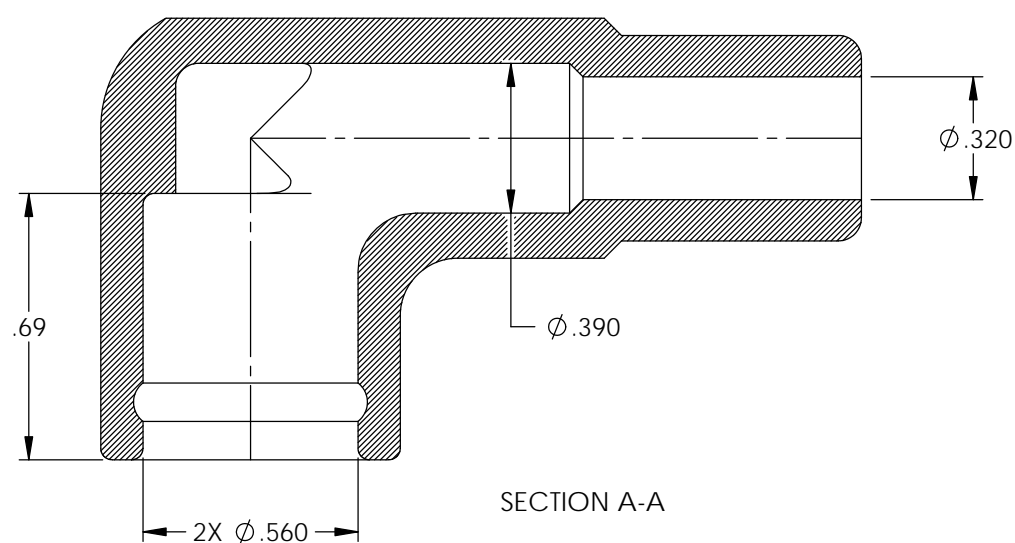
P/C	DESCRIPTION	MAT'L	COLOR	TEMPERATURE
18032	AB57-BS	SILICONE	BLACK	400°

NOTE: FOR MAXIMUM PERFORMANCE AND RELIABILITY,
ALWAYS USE ETCO ENGINEERED IGNITION TERMINALS
WITH ETCO AUTOMOTIVE INSULATORS.

Rev.	Description of Change/ SCN#	Date
1	Redrawn in SW from ACAD Org.Eng.Dwg.Date: 5/03/95	12/05/19



DUROMETER TO BE TAKEN IN THIS AREA USING
SHORE A-2 DUROMETER.
(SEE FINISHED PARTS: MAT'L/DUROMETER SPEC.)



UNCONTROLLED COPY

 THIRD ANGLE PROJECTION TOLERANCES UNLESS OTHERWISE SPECIFIED INCHES: .XX - ±.030 .XXX - ±.015 ANGLES: ±2°	MOLD NO.	Title: Angle Boot		
	2153	DO NOT SCALE DWG.	Drawn By: S.Johnson	Date: 12/05/19
 ETCO	ETCO Incorporated Engineered Products 25 Bellows Street Warwick, RI 02888 Phone: (401) 467-2400 Fax: (401) 467-9230 www.ETCO.com	Design Control By: ETCO	Scale: 2X	Size B
	Dwg. No.: AB57 cust			