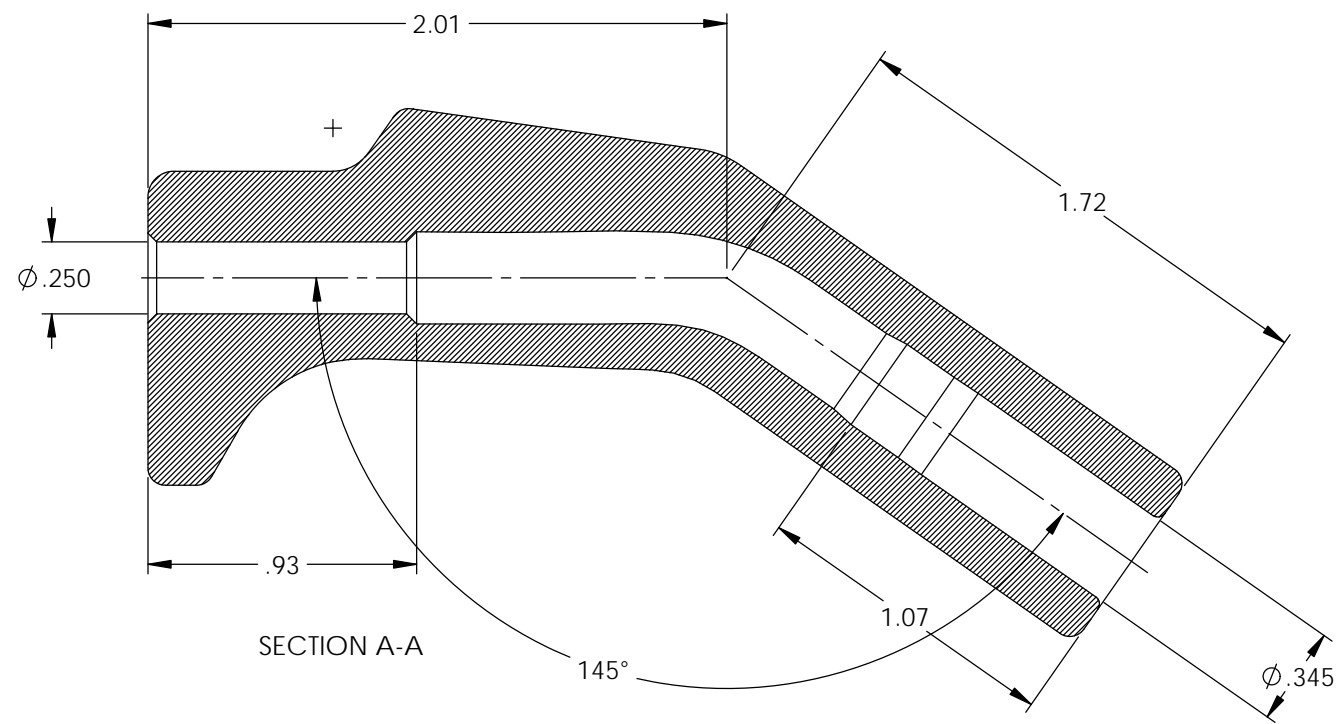
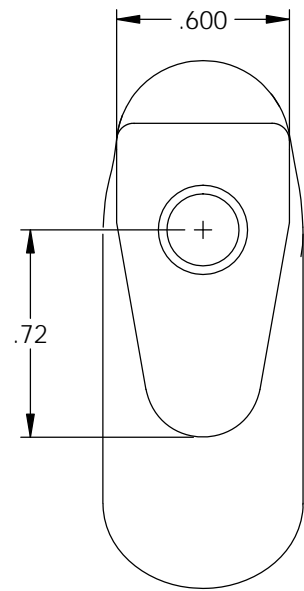
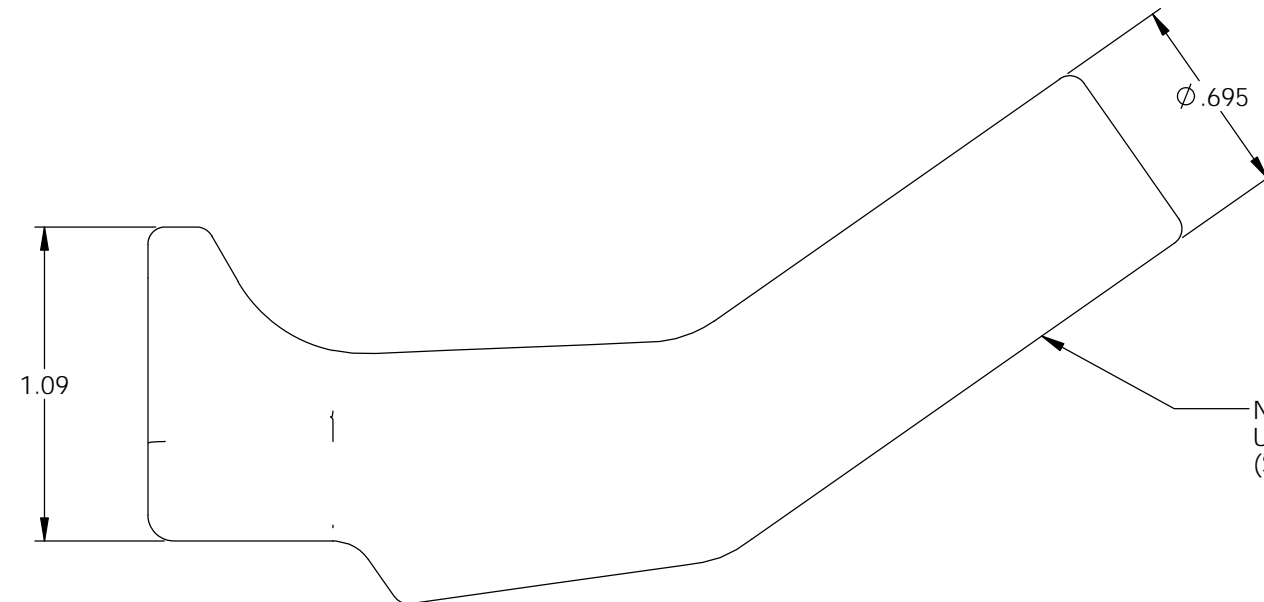
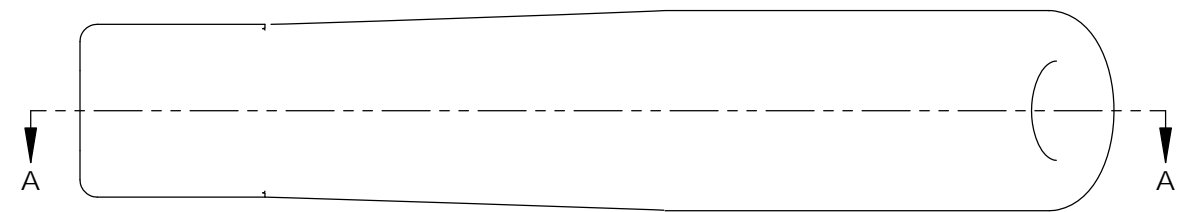


Rev.	Description of Change/ SCN#	Date
1	Redrawn in SW from ACAD Org.Eng.Dwg.Date: 4/21/04	7/22/19



P/C	DESCRIPTION	COLOR	MATERIAL	TEMPERATURE
16158	AB62-BS	BLACK	SILICONE	400°
16159	AB62-GS	GREY	SILICONE	400°
16170	AB62-GS-600	GREY	SILICONE	600°

NOTE:
FOR MAXIMUM PERFORMANCE AND RELIABILITY,
ALWAYS USE ETCO ENGINEERED IGNITION TERMINALS
WITH ETCO AUTOMOTIVE INSULATORS.



NOTE: DUROMETER TO BE TAKEN IN THIS AREA
USING SHORE A-2 DUROMETER.
(SEE FINISHED PARTS: MATERIAL/DUROMETER SPEC.)

UNCONTROLLED COPY

 THIRD ANGLE PROJECTION TOLERANCES UNLESS OTHERWISE SPECIFIED INCHES: .XX - ±.030 .XXX - ±.015 ANGLES: ±5°	TOOL NO. 2214	Title: Angle Boot		
		DO NOT SCALE DWG.	Drawn By: S.Johnson	Date: 7/22/19
	ETCO Incorporated Engineered Products 25 Bellows Street Warwick, RI 02888 Phone: (401) 467-2400 Fax: (401) 467-9230 www.ETCO.com	Design Control By: ETCO	Scale: 2X	Size: B
		Dwg. No.: AB62 cust		