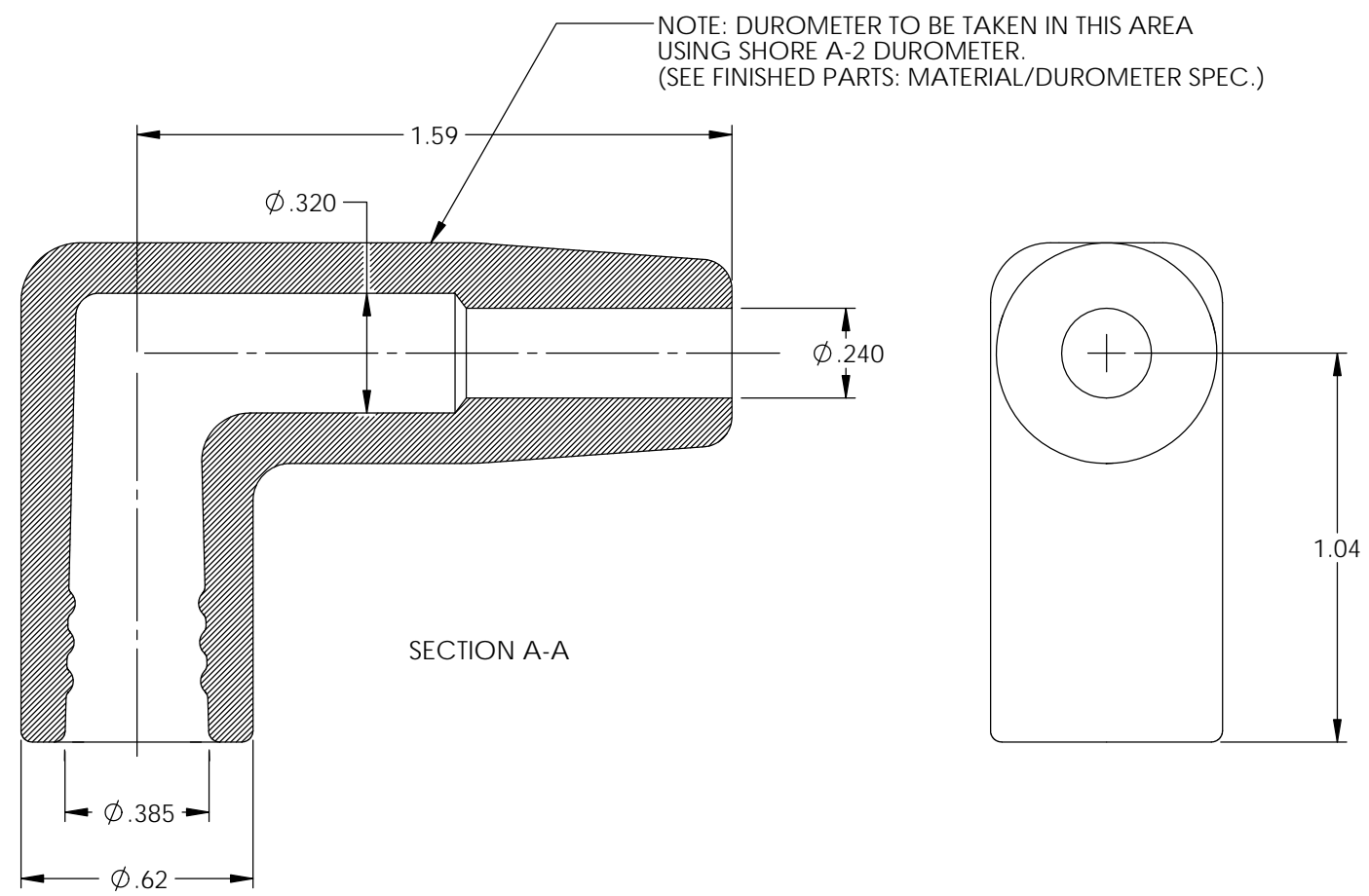
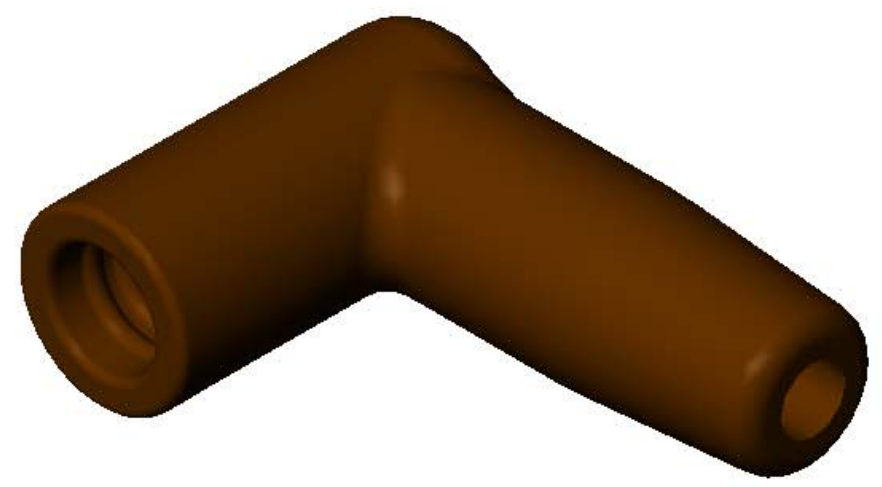
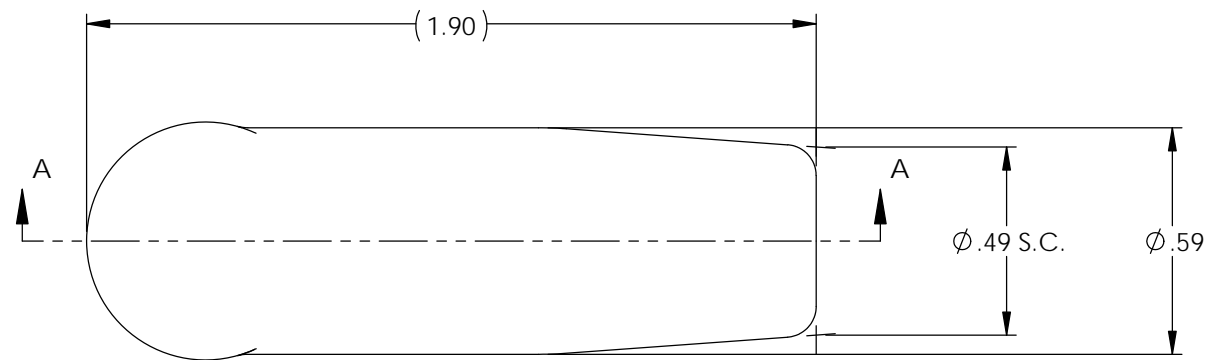


P/C	DESCRIPTION	COLOR	MATERIAL	TEMPERATURE
22049	AB7-7MM-BRS/HT	BROWN	SILICONE	500°
22050	AB7-7MM-BS	BLACK	SILICONE	400°

Rev.	Description of Change/ SCN#	Date
1	Redrawn in SW from ACAD Org.Eng.Dwg.Date: 3/23/15	6/25/19

NOTE:  
FOR MAXIMUM PERFORMANCE AND RELIABILITY,  
ALWAYS USE ETCO ENGINEERED IGNITION TERMINALS  
WITH ETCO AUTOMOTIVE INSULATORS.



## UNCONTROLLED COPY

 THIRD ANGLE PROJECTION TOLERANCES UNLESS OTHERWISE SPECIFIED INCHES: .XX - ±.030 .XXX - ±.015 ANGLES: ±2°	MOLD NO. <b>2252</b>	Title: <b>Universal Distributor Boot, 7mm</b>			
		DO NOT SCALE DWG.	Drawn By: <b>S.Johnson</b>	Date: <b>6/25/19</b>	
		ETCO Incorporated Engineered Products 25 Bellows Street Warwick, RI 02888 Phone: (401) 467-2400 Fax: (401) 467-9230 www.ETCO.com	Design Controlled By: <b>ETCO</b>	Scale: <b>2X</b>	Size <b>B</b>
		Dwg. No.: <b>AB7-7MM cust</b>			