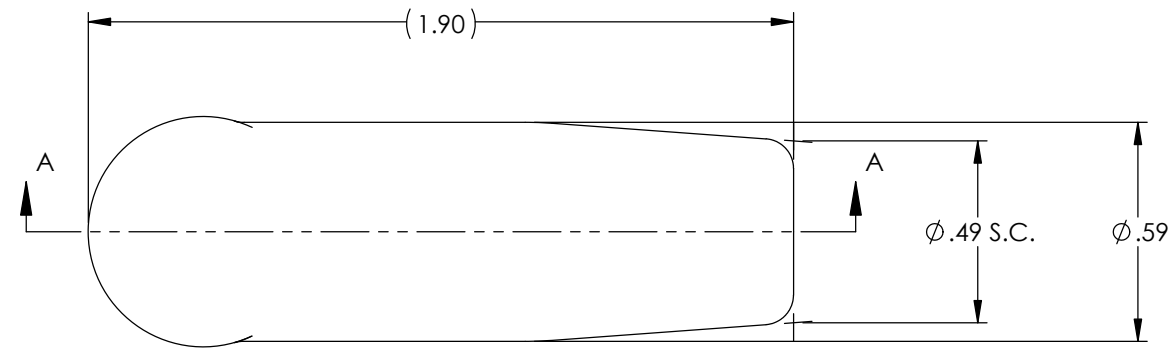
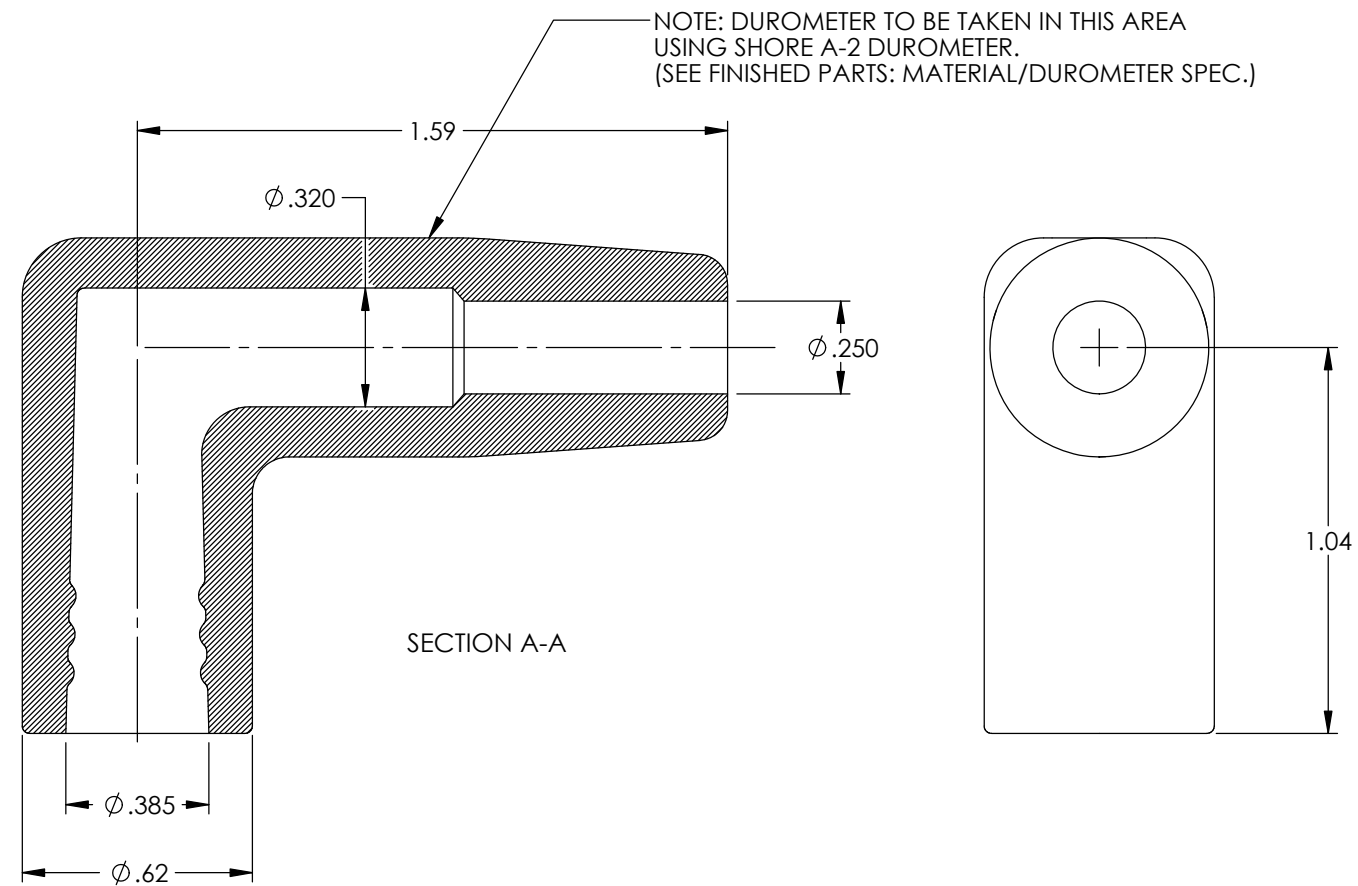
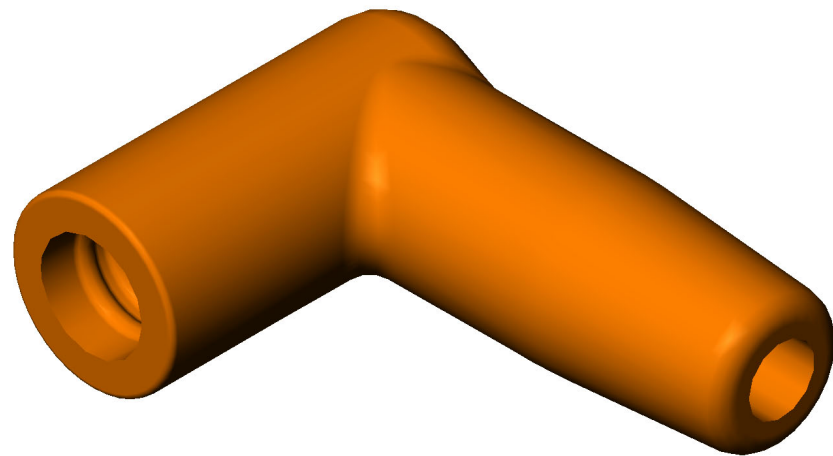


P/C	DESCRIPTION	COLOR	MATERIAL	TEMPERATURE
16106	AB7-BS	BLACK	SILICONE	400°
16160	AB7-GS	GREY	SILICONE	400°
16174	AB7-OS	ORANGE	SILICONE	400°
16039	AB7-VS/LB-3752	LIGHT BLUE	SILICONE	400°
16127	AB7-VS/RB-2752	ROYAL BLUE	SILICONE	400°
22046	AB7-GS/HT	GREY	SILICONE	500°
22047	AB7-BRS/HT	BROWN	SILICONE	500°

Rev.	Description of Change/ SCN#	Date
1	Redrawn in SW from ACAD Org.Eng.Dwg.Date: 12/13/89	6/25/19
2	ECR #6955 SMK	10/14/22



NOTE:
FOR MAXIMUM PERFORMANCE AND RELIABILITY,
ALWAYS USE ETCO ENGINEERED IGNITION TERMINALS
WITH ETCO AUTOMOTIVE INSULATORS.



UNCONTROLLED COPY

 THIRD ANGLE PROJECTION TOLERANCES UNLESS OTHERWISE SPECIFIED INCHES: .XX - ±.030 .XXX - ±.015 ANGLES: ±2°	MOLD NO. 2128	Title: Universal Distributor Boot, 8mm		
	 ETCO	DO NOT SCALE DWG.	Drawn By: S.Johnson	Date: 6/25/19
ETCO Incorporated Engineered Products 25 Bellows Street Warwick, RI 02888 Phone: (401) 467-2400 Fax: (401) 467-9230 www.ETCO.com		Design Controlled By: ETCO	Scale: 2X	Size B
		Dwg. No.: AB7 cust		