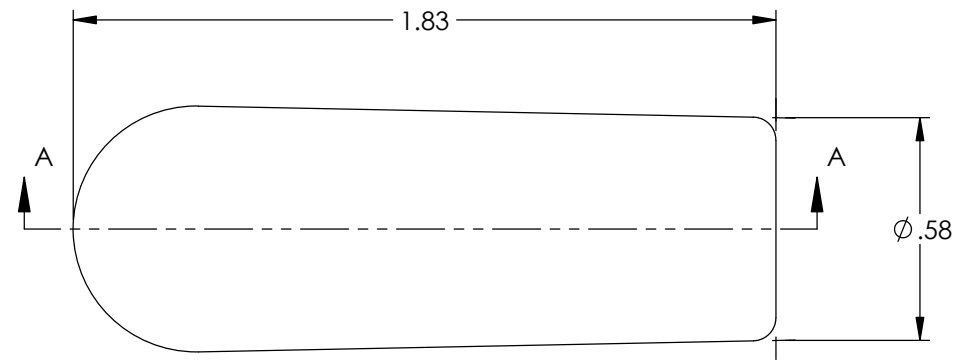
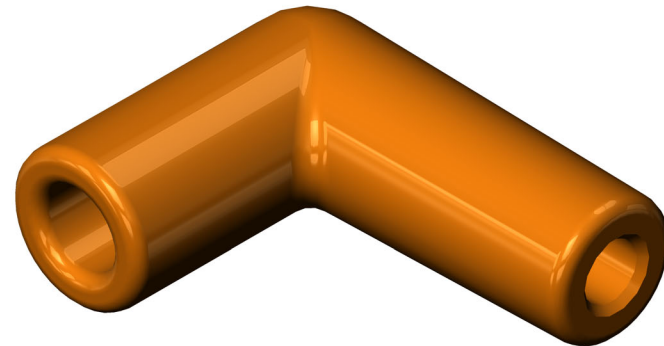


P/C	DESCRIPTION	COLOR	MATERIAL	TEMPERATURE
16009	AB8-OS	ORANGE	SILICONE	400°
16010	AB8-BS	BLACK	SILICONE	400°
16035	AB7-VS/LB-3752	LIGHT BLUE	SILICONE	400°
16056	AB7-VS/MB-4757	MEDIUM BLUE	SILICONE	400°
16065	AB8-RS	RED	SILICONE	400°
16109	AB8-GS/HT	GREY	SILICONE	500°
16128	AB7-VS/RB-2752	ROYAL BLUE	SILICONE	400°
16149	AB8-GS-600	GREY	SILICONE	600°
22054	AB8-BS/HT	BLACK	SILICONE	500°

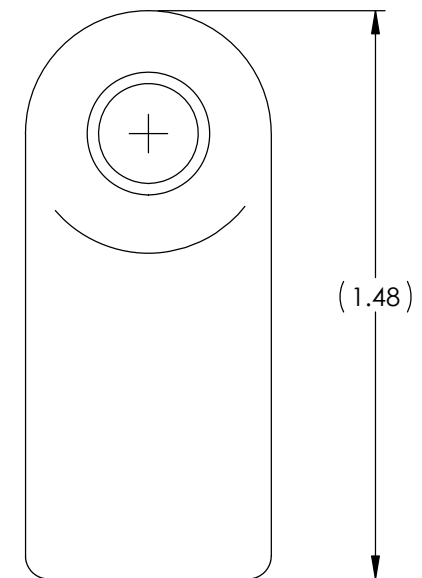
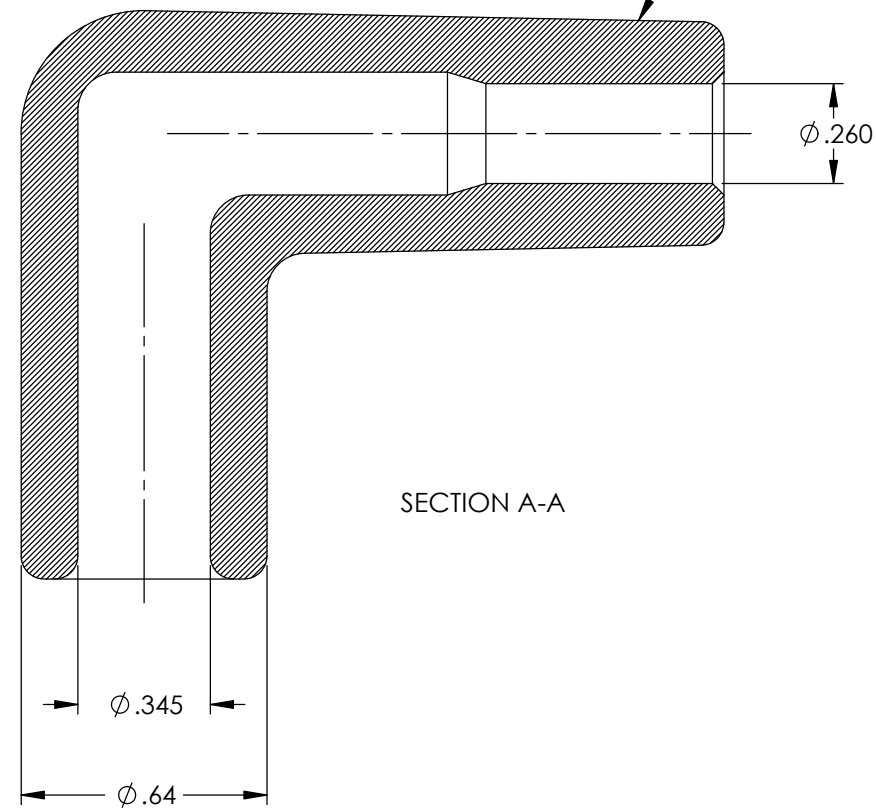
Rev.	Description of Change/ SCN#	Date
1	Redrawn in SW from ACAD Org.Eng.Dwg.Date: 6/02/87	7/01/19
2	ECR #7099 SMK	3-31-23



NOTE:  
FOR MAXIMUM PERFORMANCE AND RELIABILITY,  
ALWAYS USE ETCO ENGINEERED IGNITION TERMINALS  
WITH ETCO AUTOMOTIVE INSULATORS.



NOTE: DUROMETER TO BE TAKEN IN THIS AREA  
USING SHORE A-2 DUROMETER.  
(SEE FINISHED PARTS: MATERIAL/DUROMETER SPEC.)



## UNCONTROLLED COPY

 THIRD ANGLE PROJECTION TOLERANCES UNLESS OTHERWISE SPECIFIED  INCHES: .XX - ±.030 .XXX - ±.015 ANGLES: ±2°	MOLD NO. <b>2254</b> <b>2181</b>	Title: <b>Spark Plug Angle Boot; 8mm</b>		
	 ETCO	ETCO Incorporated Engineered Products 25 Bellows Street Warwick, RI 02888 Phone: (401) 467-2400 Fax: (401) 467-9230 www.ETCO.com	DO NOT SCALE DWG. Design Control By: <b>ETCO</b> Dwg. No.:	Drawn By: <b>S.Johnson</b> Scale: <b>2X</b> Size <b>B</b>

**AB8 cust**