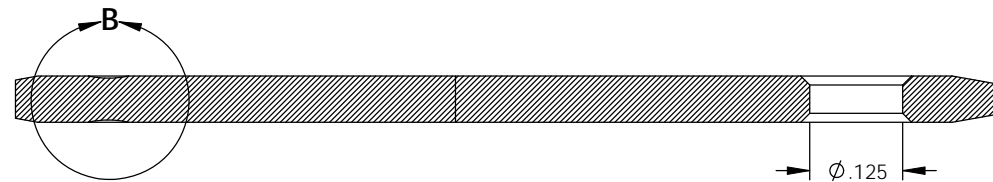
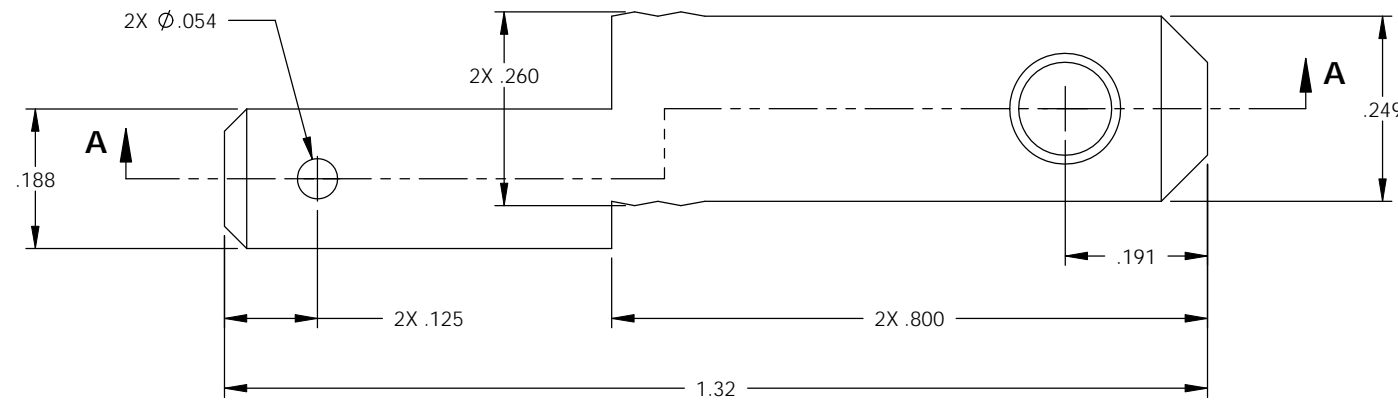
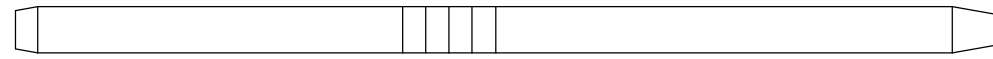


NOTES:

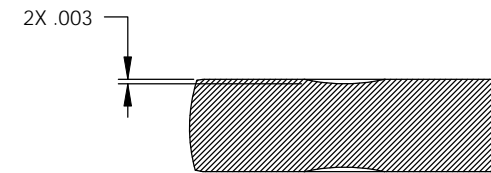
1. MATERIAL: .062 THICK C26000 BRASS, 1/2 HARD, ANNEALED TO TEMPER, PER ETCO METAL CODE 07030.
2. PLATING: POST BRIGHT TIN PLATE .0001-.0003 THICK.
3. PARTS MAY BE COATED WITH A LIGHT FILM OF LUBRICATION USED IN THE MANUFACTURING PROCESS.

P/C	DESCRIPTION	MAT'L
82503	ACPRONG-HB-TAF	NOTE 1

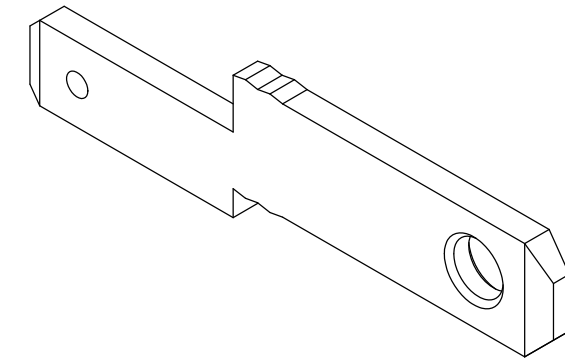
Rev.	Description of Change/ SCN#	Date
1	TRANSFERED FROM CP SCJ	8-5-08



SECTION A-A



DETAIL B  
SCALE 8 : 1



# UNCONTROLLED COPY

<p>THIRD ANGLE PROJECTION TOLERANCES UNLESS OTHERWISE SPECIFIED INCHES: .XX - <math>\pm .030</math> .XXX - <math>\pm .015</math> ANGLES: <math>\pm 5^\circ</math></p>	<p>TOOL NO. <b>0841</b></p>	<p>Title: PRONG TERMINAL</p>			
		<p>ETCO Incorporated Engineered Products 25 Bellows Street Warwick, RI 02888 Phone: (401) 467-2400 Fax: (401) 467-9230 www.ETCO.com</p>	<p>DO NOT SCALE DWG.</p>	<p>Drawn By: S.JOHNSON</p>	<p>Date: 8-5-08</p>
		<p>Chk'd/App'd By:</p>	<p>Scale: 4X</p>	<p>Size B</p>	<p>Dwg. No.: ACPRONG cust</p>