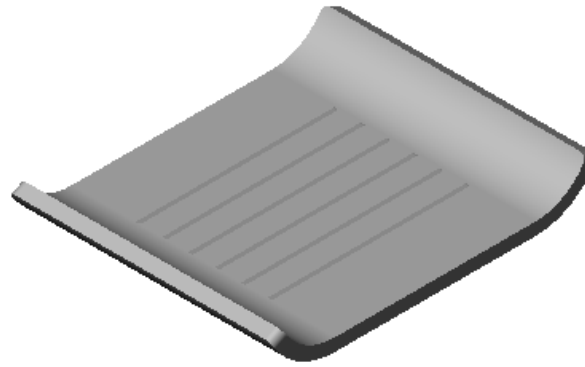


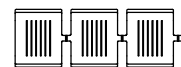
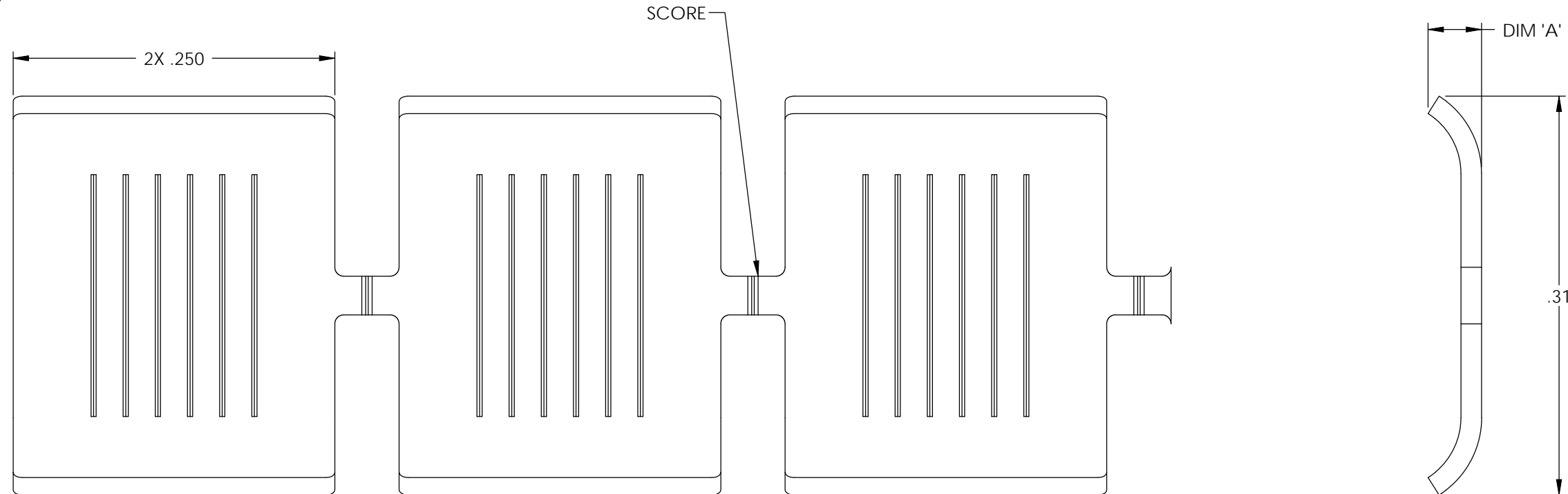
NOTES:

1. MATERIAL: .010 THICK BRASS
#2 TEMPER (1/2 HARD)
PER ETCO METAL CODE 00029.
2. MATERIAL: .010 THICK NICKEL PLATED STEEL
#2 TEMPER (1/2 HARD)
PER ETCO METAL CODE 03066.
3. MATERIAL: .012 THICK NICKEL PLATED STEEL
#2 TEMPER (1/2 HARD)
PER ETCO METAL CODE 03070.
4. MATERIAL: .016 THICK BRASS
#2 TEMPER (1/2 HARD)
PER ETCO METAL CODE 00183.
5. MATERIAL: .016 THICK PRE-TINNED BRASS
#2 TEMPER (1/2 HARD)
PER ETCO METAL CODE 01242.
6. MATERIAL: .016 THICK NICKEL PLATED STEEL
#2 TEMPER (1/2 HARD)
PER ETCO METAL CODE 03137.
7. MATERIAL: .020 THICK BRASS
#2 TEMPER (1/2 HARD)
PER ETCO METAL CODE 00446.
8. MATERIAL: .020 THICK NICKEL PLATED STEEL
#3 TEMPER (1/4 HARD)
PER ETCO METAL CODE 03273.
9. PARTS MAY BE COATED WITH A LIGHT FILM OF LUBRICATION USED IN THE MANUFACTURING PROCESS.
10. ACCEPTS 1,000-3,200 CMA.

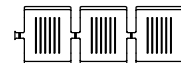
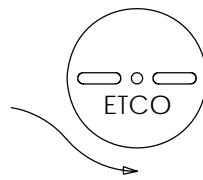
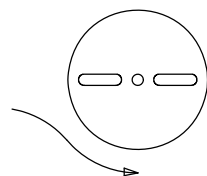


P/C	DESCRIPTION (2)	DIM 'A'	MAT'L
10035	AN125-10-NPS	.035	NOTE 2
10036	AN125-10-HB	.035	NOTE 1
10046	AN125-159-HB	.041	NOTE 4
10047	AN125-159-THB	.041	NOTE 5
10048	AN125-159-NPS	.041	NOTE 6
10058	AN125-20-HB	.045	NOTE 7
10059	AN125-20-NPS	.045	NOTE 8
10118	AN125-12-NPS	.035	NOTE 3

Rev.	Description of Change/ SCN#	Date
1	REDRAWN ON SOLIDWORKS NO CHANGES SCJ ORG.ENG.DWG.DATE: 12-7-95	8-4-06
2	SCN-140533 JMR	11/25/09



DIRECTION EXITING TOOL,
CARRIER TO THE FRONT, FORMED UP



DIRECTION TOWARD APPLICATOR,
CARRIER TO THE BACK, FORMED UP

THIS PRINT IS THE PROPERTY OF ETCO INCORPORATED. NO PART OF THIS DESIGN MAY BE USED IN ANY WAY WITHOUT WRITTEN CONSENT FROM ETCO INCORPORATED.

UNCONTROLLED COPY

<p>THIRD ANGLE PROJECTION TOLERANCES UNLESS OTHERWISE SPECIFIED INCHES: .XX - ±.030 .XXX - ±.015 ANGLES: ±5°</p>	<p>TOOL NO. 0722</p>	<p>Title: AUTOBAND</p>			
		<p>DO NOT SCALE DWG.</p>	<p>Drawn By: S.JOHNSON</p>	<p>Date: 8-4-06</p>	
		<p>ETCO Incorporated Engineered Products 25 Bellows Street Warwick, RI 02888 Phone: (401) 467-2400 Fax: (401) 467-9230 www.ETCO.com</p>	<p>Chk'd/App'd By:</p>	<p>Scale: 10X</p>	<p>Size B</p>
		<p>Dwg. No.: AN125 cust</p>			