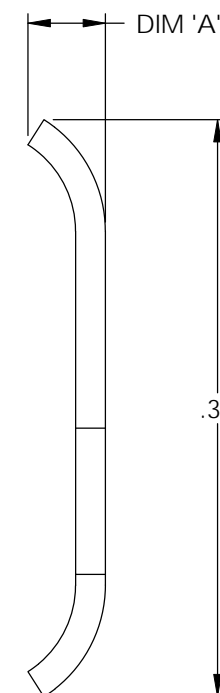
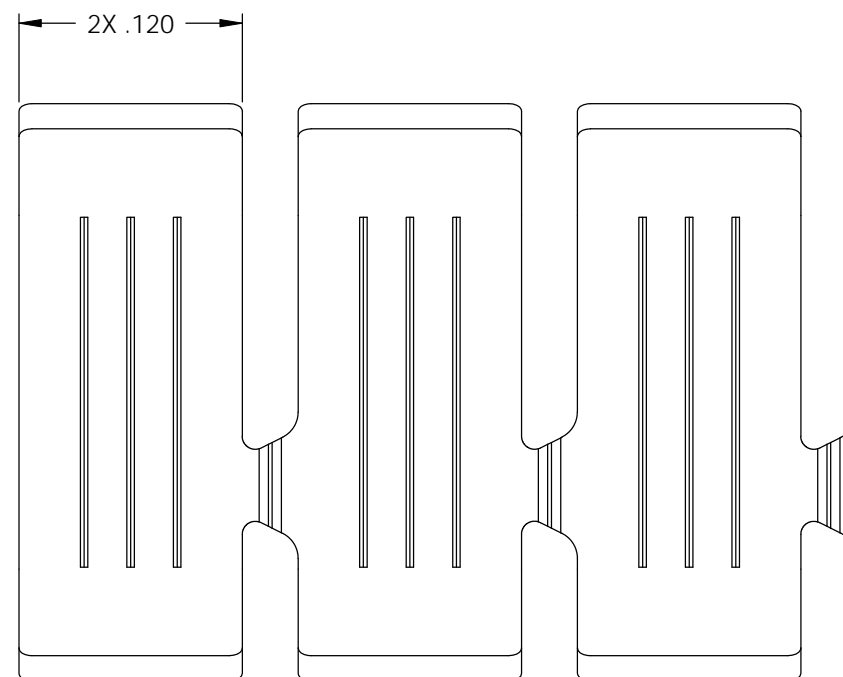
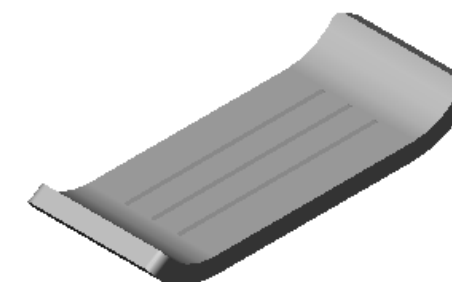


NOTES:

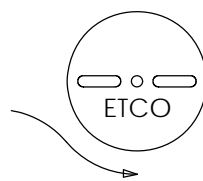
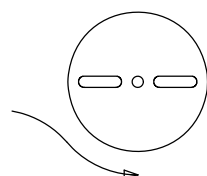
1. MATERIAL: .016 THICK BRASS
#2 TEMPER (1/2 HARD)
PER ETCO METAL CODE 00183.
2. MATERIAL: .016 THICK PRE-TINNED BRASS
#2 TEMPER (1/2 HARD)
PER ETCO METAL CODE 01242.
3. MATERIAL: .016 THICK NICKEL PLATED STEEL
#2 TEMPER (1/2 HARD)
PER ETCO METAL CODE 03137.
4. MATERIAL: .020 THICK BRASS
#2 TEMPER (1/2 HARD)
PER ETCO METAL CODE 00446.
5. MATERIAL: .020 THICK PRE-TINNED BRASS
#2 TEMPER (1/2 HARD)
PER ETCO METAL CODE 01481.
6. MATERIAL: .020 THICK NICKEL PLATED STEEL
#3 TEMPER (1/4 HARD)
PER ETCO METAL CODE 03273.
7. PARTS MAY BE COATED WITH A LIGHT FILM OF LUBRICATION USED IN THE MANUFACTURING PROCESS.
8. ACCEPTS 1,000-3,200 CMA.

P/C	DESCRIPTION	DIM 'A'	MAT'L
10031	AN125N-159-THB	.041	NOTE 2
10045	AN125N-159-HB	.041	NOTE 1
10055	AN125N-20-THB	.045	NOTE 5
10056	AN125N-20-HB	.045	NOTE 4
10057	AN125N-20-NPS	.045	NOTE 6
10082	AN125N-159-NPS	.041	NOTE 3

Rev.	Description of Change/ SCN#	Date
1	REDRAWN ON SOLIDWORKS ADDED P/Cs SCJ ORG.ENG.DWG.DATE: 12-7-95	8-4-06





DIRECTION EXITING TOOL,
CARRIER TO THE FRONT, FORMED UP



DIRECTION TOWARD APPLICATOR,
CARRIER TO THE BACK, FORMED UP

THIS PRINT IS THE PROPERTY OF ETCO INCORPORATED. NO PART OF THIS DESIGN MAY BE USED IN ANY WAY WITHOUT WRITTEN CONSENT FROM ETCO INCORPORATED.

UNCONTROLLED COPY

 THIRD ANGLE PROJECTION TOLERANCES UNLESS OTHERWISE SPECIFIED INCHES: .XX - ±.030 .XXX - ±.015 ANGLES: ±5°	TOOL NO. 0722	Title: AUTOBAND		
		DO NOT SCALE DWG.	Drawn By: S.JOHNSON	Date: 8-4-06
		ETCO Incorporated Engineered Products 25 Bellows Street Warwick, RI 02888 Phone: (401) 467-2400 Fax: (401) 467-9230 www.ETCO.com	Chk'd/App'd By:	Scale: 10X Size: B
		Dwg. No.: AN125N cust		