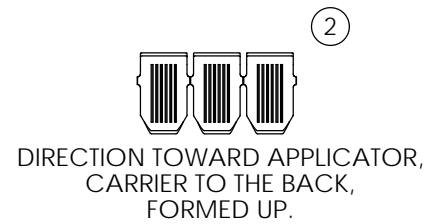
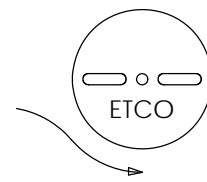
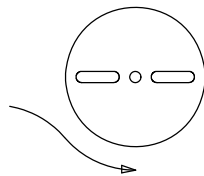
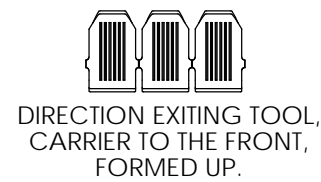
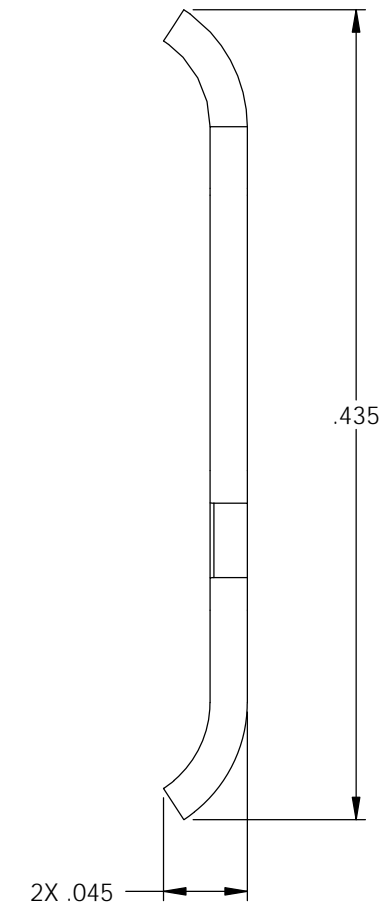
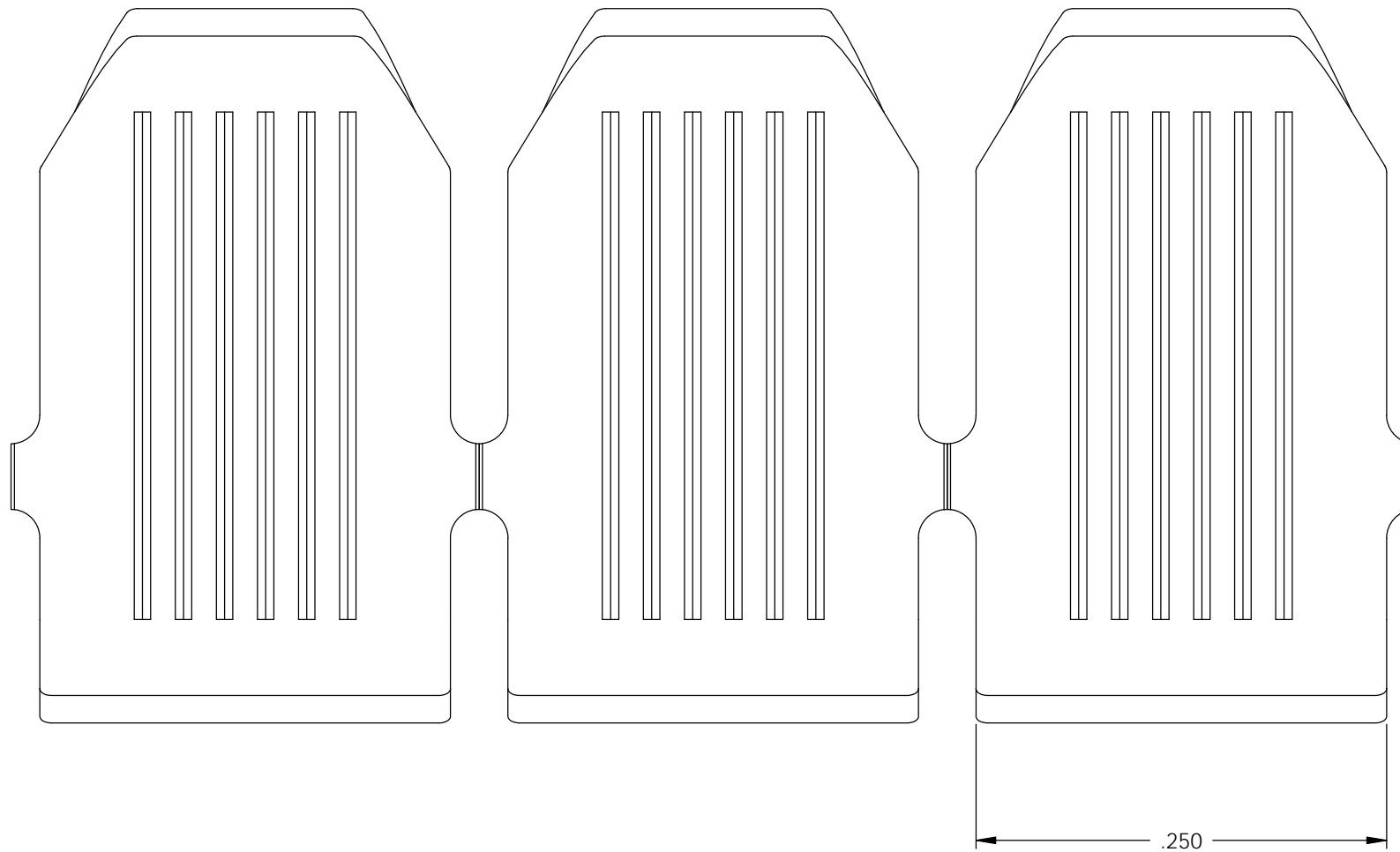
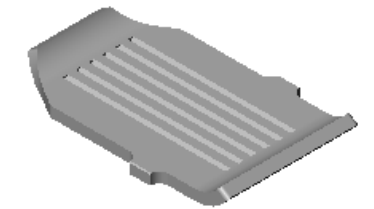


NOTE:

- 1.) MAT'L: .020 THK., BRASS, #2 TEMPER (HALF HARD), PER ETCO METAL CODE NO. 00491.
- 2.) MAT'L: .020 THK., PRE-TINNED BRASS, #2 TEMPER (HALF HARD), PER ETCO METAL CODE NO. 01534.
- 3.) MAT'L: .020 THK., NICKEL PLATED STEEL, #3 TEMPER (QUARTER HARD), PER ETCO METAL CODE NO. 03277.
- 4.) PARTS MAY BE COATED WITH A LIGHT FILM OF LUBRICATION USED IN THE MANUFACTURING PROCESS.
- 5.) ACCEPTS 4,800 TO 7,000 CMA.

| P/C | DESCRIPTION | MAT'L |
|-------|--------------|--------|
| 10069 | AN156-20-HB | NOTE 1 |
| 10072 | AN156-20-THB | NOTE 2 |
| 10073 | AN156-20-NPS | NOTE 3 |

| Rev. | Description of Change/ SCN# | Date |
|------|--|----------|
| 1 | REDRAWN ON SOLIDWORKS NO CHANGES SCJ ORG.ENG.DWG.DATE: 12-5-95 | 10-5-05 |
| 2 | SCN-140538 JMR | 12-08-09 |



UNCONTROLLED COPY

| | | | | |
|---|---------------------------------|---|----------------------------|--------------------------|
| <p>THIRD ANGLE PROJECTION TOLERANCES UNLESS OTHERWISE SPECIFIED INCHES: .XX - ±.030 .XXX - ±.015 ANGLES: ±5°</p> | <p>TOOL NO. 0723</p> | <p>Title: AUTOBAND</p> | | |
| | | <p>DO NOT SCALE DWG.</p> | <p>Drawn By: S.JOHNSON</p> | <p>Date: 10-5-05</p> |
| <p>ETCO Incorporated Engineered Products 25 Bellows Street Warwick, RI 02888 Phone: (401) 467-2400 Fax: (401) 467-9230 www.ETCO.com</p> | | <p>Chk'd/App'd By:</p> | <p>Scale: 10X</p> | <p>Size B</p> |
| | | <p>Dwg. No.: AN156-20 cust</p> | | |