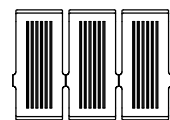
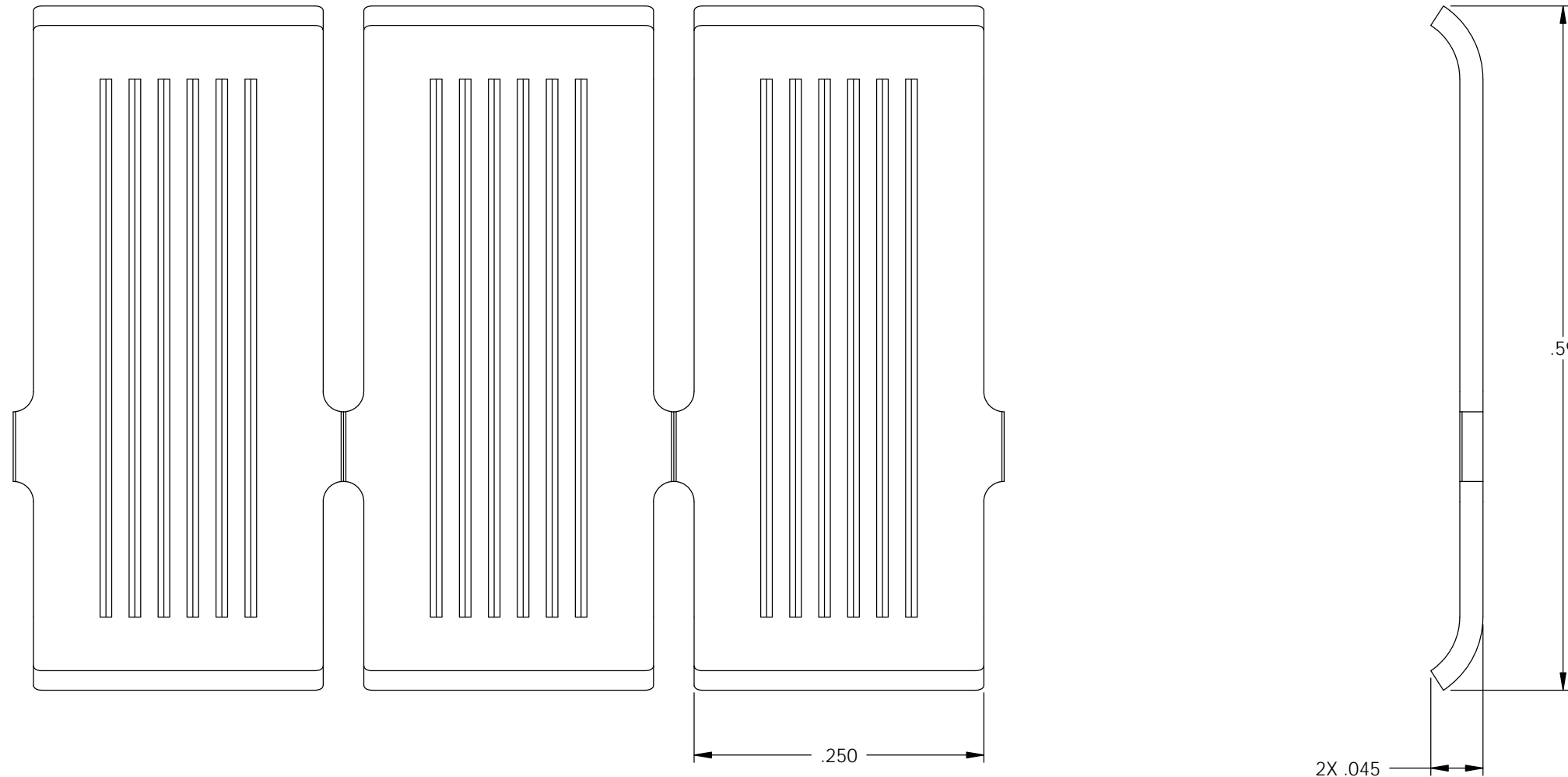
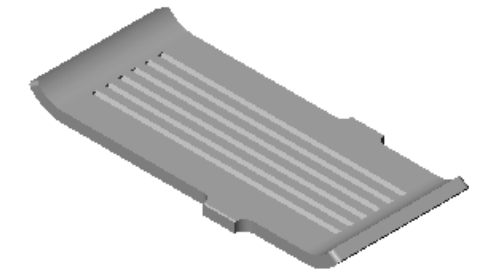


NOTE:

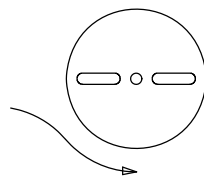
- 1.) MAT'L: .020 THK., BRASS, #2 TEMPER (HALF HARD), PER ETCO METAL CODE NO. 00532.
- 2.) MAT'L: .020 THK., PRE-TINNED BRASS, #2 TEMPER (HALF HARD), PER ETCO METAL CODE NO. 01554.
- 3.) MAT'L: .020 THK., NICKEL PLATED STEEL, #3 TEMPER (QUARTER HARD), PER ETCO METAL CODE NO. 03274.
- 4.) PARTS MAY BE COATED WITH A LIGHT FILM OF LUBRICATION USED IN THE MANUFACTURING PROCESS.
- 5.) ACCEPTS 10,000 TO 12,800 CMA.

P/C	DESCRIPTION	MAT'L
10033	AN200-20-HB	NOTE 1
10034	AN200-20-THB	NOTE 2
10049	AN200-20-NPS	NOTE 3

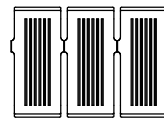
Rev.	Description of Change/ SCN#	Date
1	REDRAWN ON SOILDWORKS NO CHANGES SCJ ORG.ENG.DWG.DATE: 12-7-95	10-5-05



DIRECTION EXITING TOOL,
CARRIER TO THE FRONT,
FORMED UP.



DIRECTION TOWARD APPLICATOR,
CARRIER TO THE BACK,
FORMED UP.



UNCONTROLLED COPY

<p>THIRD ANGLE PROJECTION TOLERANCES UNLESS OTHERWISE SPECIFIED INCHES: .XX - ±.030 .XXX - ±.015 ANGLES: ±5°</p>	<p>TOOL NO. 0723</p>	<p>Title: AUTOBAND</p>		
		<p>DO NOT SCALE DWG.</p>	<p>Drawn By: S.JOHNSON</p>	<p>Date: 10-5-05</p>
<p>ETCO Incorporated Engineered Products 25 Bellows Street Warwick, RI 02888 Phone: (401) 467-2400 Fax: (401) 467-9230 www.ETCO.com</p>		<p>Chk'd/App'd By:</p>	<p>Scale: 8X</p>	<p>Size B</p>
		<p>Dwg. No.: AN200-20 cust</p>		