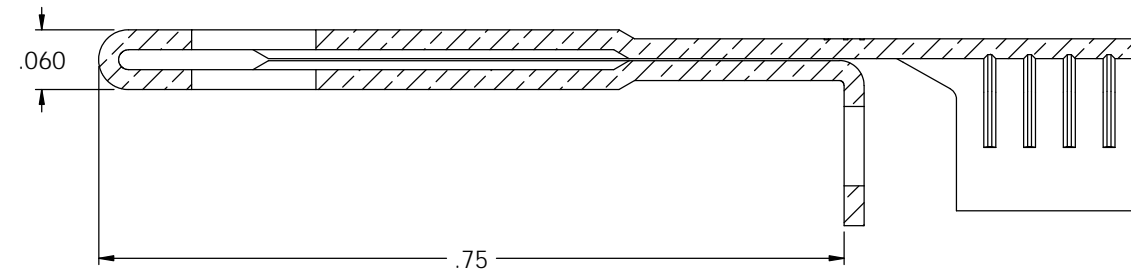
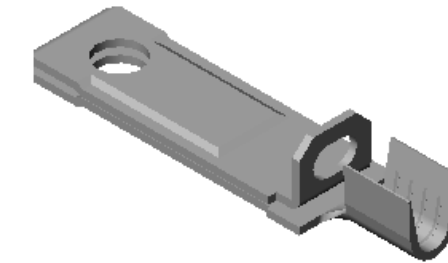
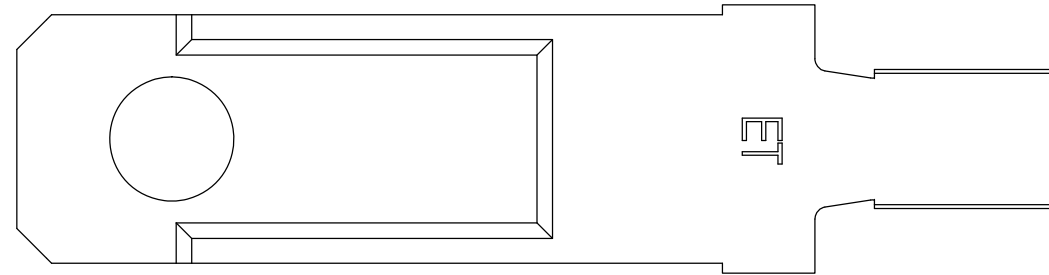


NOTES:

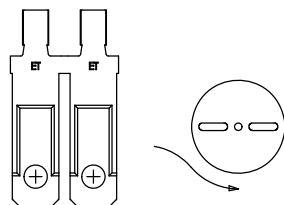
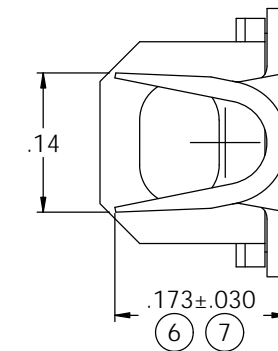
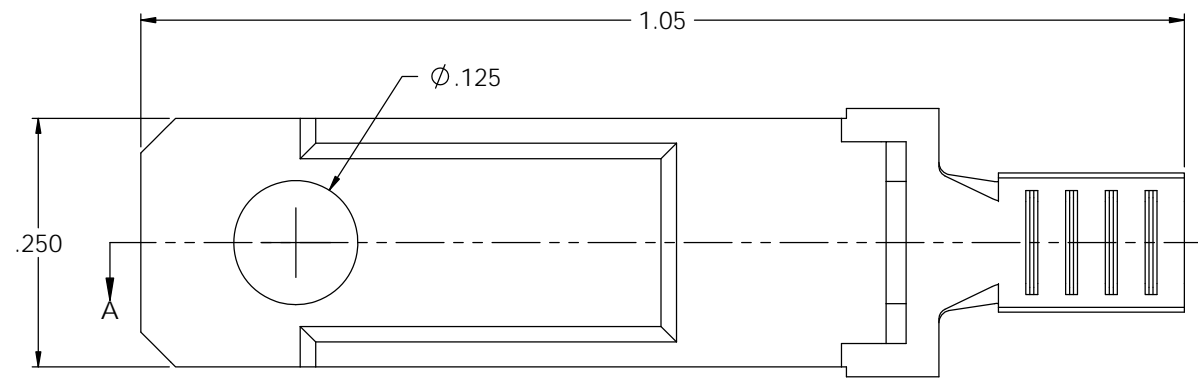
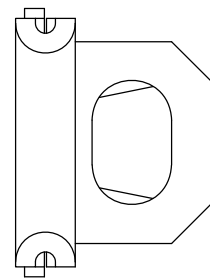
- MATERIAL: .020 THICK C26000 BRASS; 1/2 HARD ANNEALED TO TEMPER; PER ETCO METAL CODE 00098.
- MATERIAL: .020 THICK C26000 PRE-TINNED BRASS; 1/2 HARD ANNEALED TO TEMPER; PER ETCO METAL CODE 01572. (4)
- WIRE RANGE: #12 AWG.
- FOR WINDING AND REWINDING INSTRUCTIONS SEE WI-09-10-8.

P/C	DESCRIPTION (3)	MAT'L	REWIND	REWORK
14081	B817F12-A-HB	NOTE 1	NO	X
10421	B817F12-ARB-HB	NOTE 1	YES	X
10423	B817F12-ARC-HB	NOTE 1	YES	X
10425	B817F12-ARC-THB	NOTE 2	YES	X

Rev.	Description of Change/ SCN#	Date
1	TRANSFER FROM CP TO EP	10-26-04
2	COMPLETED P/C LIST SCJ	9-10-08
3	ECR# 816 SCJ	10-31-11
4	ECR# 1975 SCJ	2/18/13
5	ECR# 3343 SCJ	10/09/14
6	ECR# 5435 SCJ	1/28/19
7	ECR# 5659 SCJ	7/26/19



SECTION A-A
SCALE 8 : 1



DIRECTION EXITING TOOL
EARS DOWN, TO THE BACK
SEE NOTE 4

UNCONTROLLED COPY

 THIRD ANGLE PROJECTION	TOOL NO. 0889	Title: NON-POLARIZED PADDED BLADE		
		DO NOT SCALE DWG.	Drawn By: C. O'REILLY	Date: 9-10-03
TOLERANCES UNLESS OTHERWISE SPECIFIED INCHES: .XX - ±.030 .XXX - ±.015 ANGLES: ±5°		ETCO Incorporated Engineered Products 25 Bellows Street Warwick, RI 02888 Phone: (401) 467-2400 Fax: (401) 467-9230 www.ETCO.com	Chk'd/App'd By:	Size: C
			Dwg. No.: B817F12 cust	