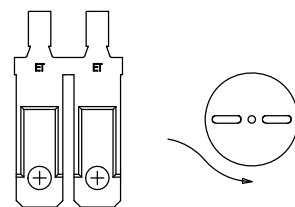
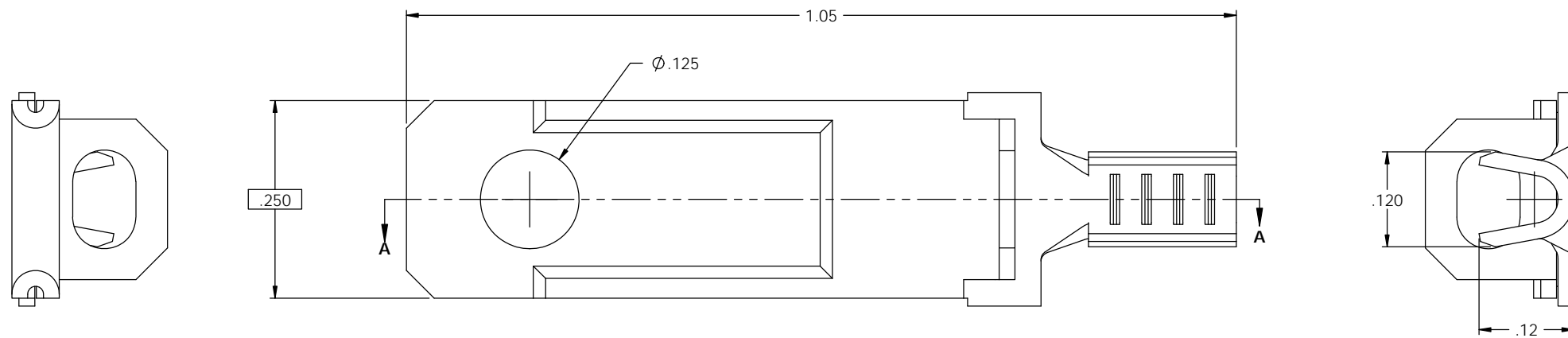
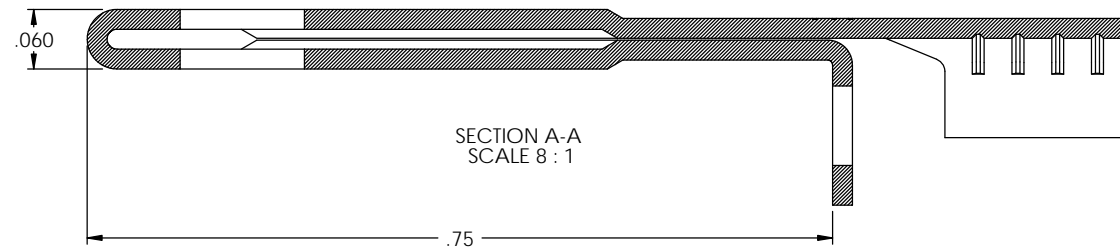
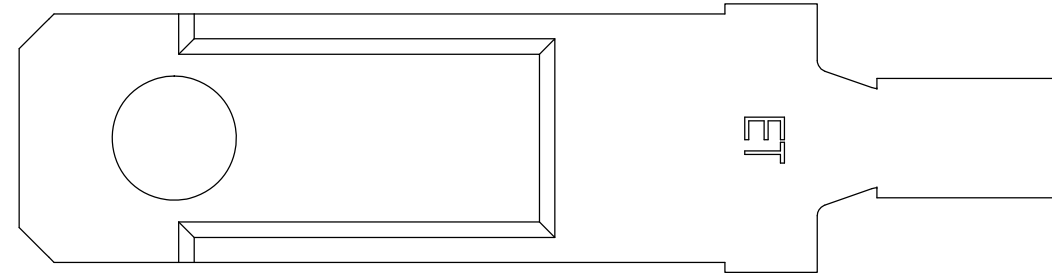


NOTES:

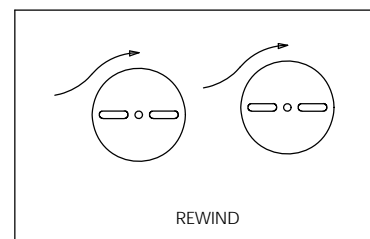
- MATERIAL: .020 THICK C26000 BRASS; 1/2 HARD
ANNEALED TO TEMPER; PER ETCO METAL CODE 00098.
- WIRE RANGE: #18-#20 AWG.

P/C	DESCRIPTION ②	MAT'L	REWIND	RA
10430	B817F18-ARB-HB	NOTE 1	YES	X

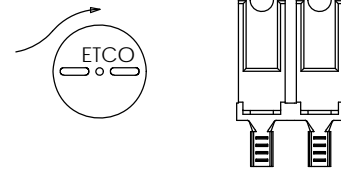
Rev.	Description of Change/ SCN#	Date
1	TRANSFER FROM CP TO EP	10-26-04
2	ECR# 816 SCJ	10-31-11
3	ECR# 3343 SCJ	10/09/14



DIRECTION EXITING TOOL
EARS DOWN, TO THE BACK



REWIND



DIRECTION TOWARDS APPLICATOR
EARS UP, TO THE FRONT

UNCONTROLLED COPY			
THIRD ANGLE PROJECTION	TOOL NO. 0889	Title: NON-POLARIZED PADDED BLADE	
TOLERANCES UNLESS OTHERWISE SPECIFIED	DO NOT SCALE DWG.	Drawn By: S. JOHNSON	Date: 10-26-04
INCHES: .XX - ±.030 .XXX - ±.015		ETCO Incorporated Engineered Products 25 Bellows Street Warwick, R.I. 02888 Phone: (401)467-2400 FAX: (401)467-9230 www.ETCO.com	Chk'd/App'd By: _____ Scale: 8X Size: C
ANGLES - ±5°		Dwg. No.: B817F18	