
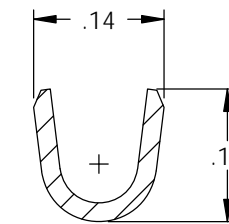
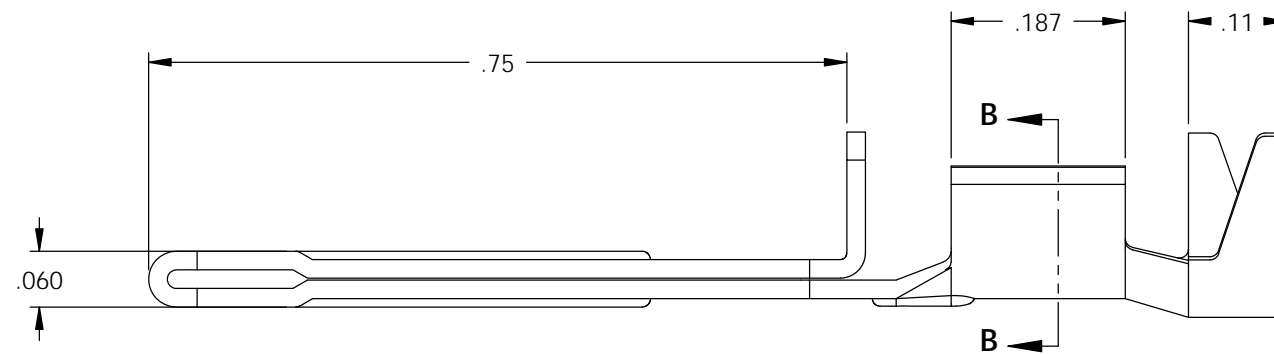
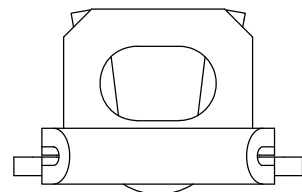
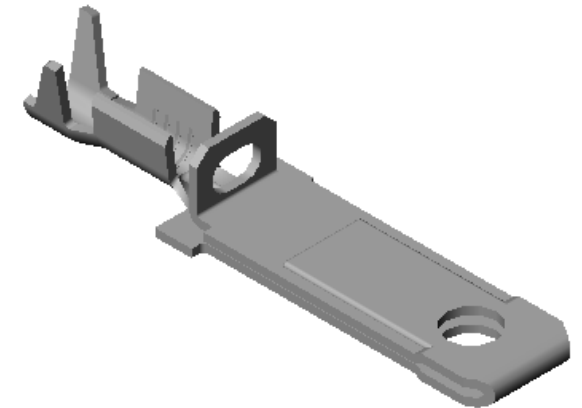
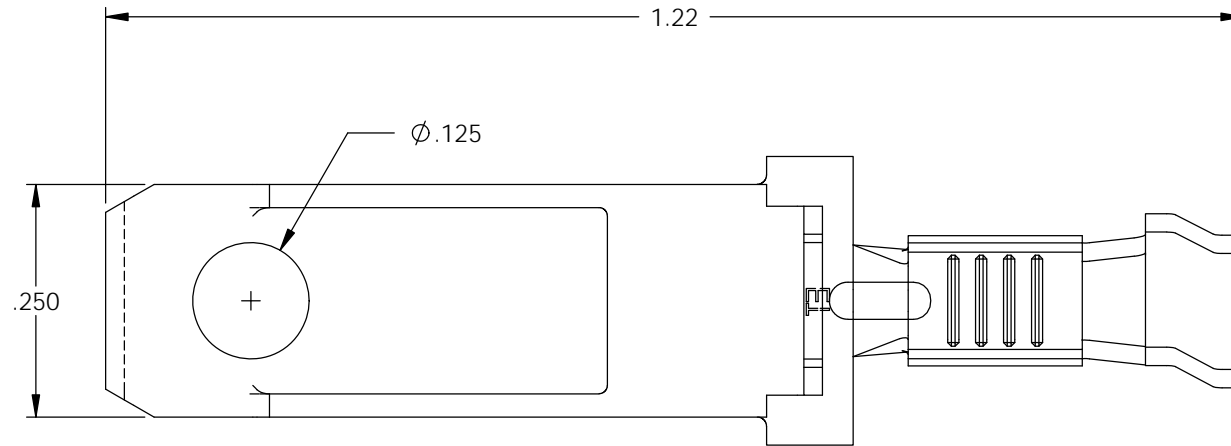


NOTE:

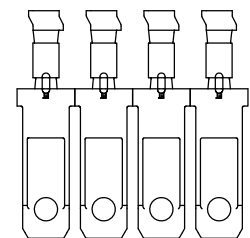
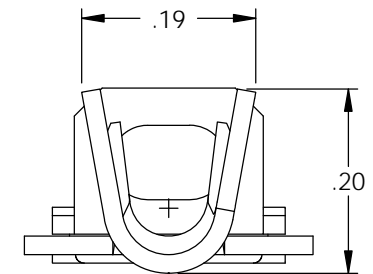
- 1.) MAT'L: .020 BRASS,  
#2 TEMPER (HALF HARD), ANNEALED TO TEMPER,  
PER ETCO METAL CODE NO. 00093.
- 2.) MAT'L: .020 PRE-TINNED BRASS,  
#2 TEMPER (HALF HARD), ANNEALED TO TEMPER,  
PER ETCO METAL CODE NO. 00094.
- 3.) PARTS MAY BE COATED WITH A LIGHT FILM  
OF LUBRICATION USED IN THE MANUFACTURING  
PROCESS.
- 4.) WIRE RANGE: 14-18 AWG.
- 5.) INSULATION RANGE:  $\phi$ .120 -  $\phi$ .175

P/C	DESCRIPTION ②	MAT'L	REWIND	
14248	B817F2-A-HB	NOTE 1	YES	X

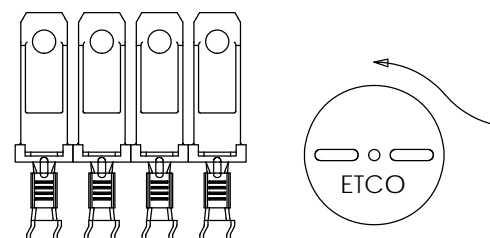
Rev.	Description of Change/ SCN#	Date
1	TRANSFERED FROM CP SCJ	9-24-08
2	ECR# 816 SCJ	11-2-11



SECTION B-B  
SCALE 5 : 1





DIRECTION EXITING TOOL,  
EARS DOWN, TO THE BACK



DIRECTION TOWARD APPLICATOR,  
FROM RIGHT,  
EARS UP, TO THE FRONT

THIS PRINT IS THE PROPERTY OF ETCO INCORPORATED. NO PART OF THIS DESIGN MAY BE USED IN ANY WAY WITHOUT WRITTEN CONSENT FROM ETCO INCORPORATED.

# UNCONTROLLED COPY

 THIRD ANGLE PROJECTION TOLERANCES UNLESS OTHERWISE SPECIFIED INCHES: .XX - ±.030 .XXX - ±.015 ANGLES: ±5°	TOOL NO. <b>0858</b>	Title: <b>PADDED SPACE BLADE</b>		
		DO NOT SCALE DWG.	Drawn By: <b>S. JOHNSON</b>	Date: <b>9-24-08</b>
		ETCO Incorporated Engineered Products 25 Bellows Street Warwick, RI 02888 Phone: (401) 467-2400 Fax: (401) 467-9230 www.ETCO.com	Chk'd/App'd By:	Scale: <b>5X</b> Size: <b>B</b>
		Dwg. No.: <b>B817F2 cust</b>		