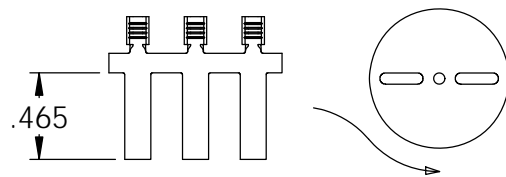
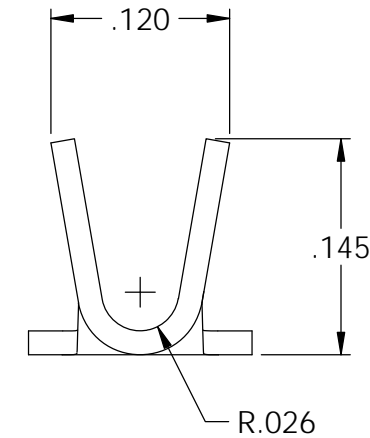
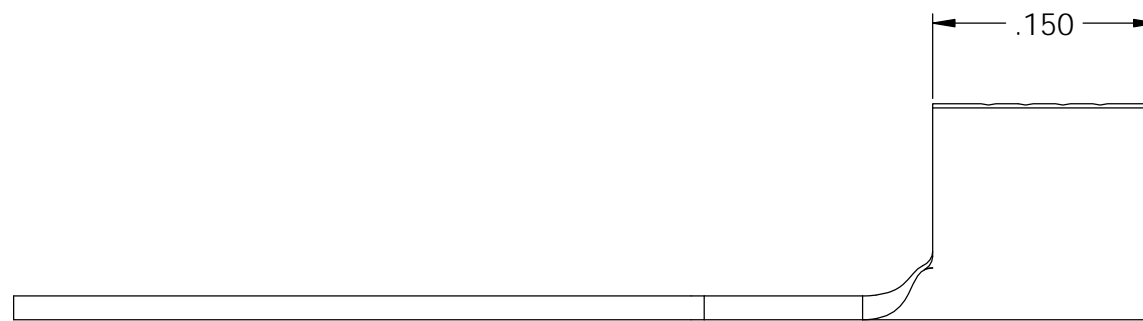
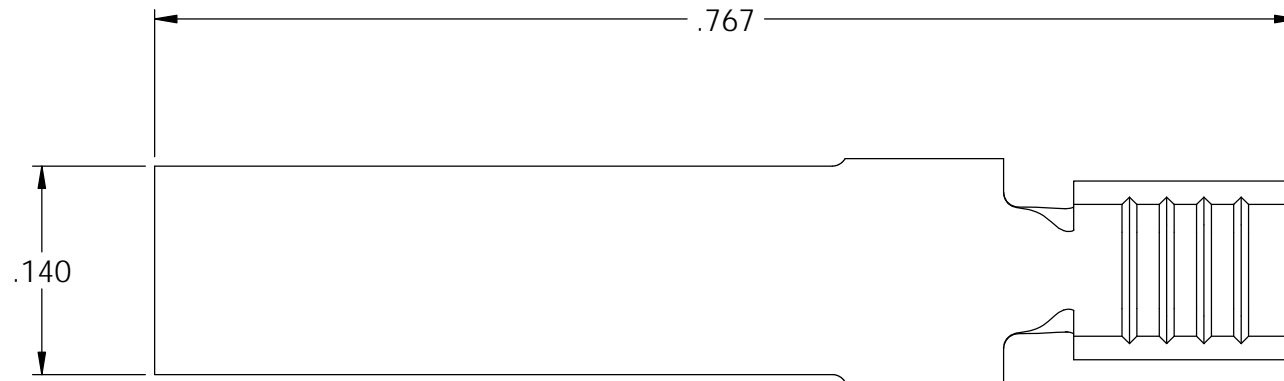


NOTES:

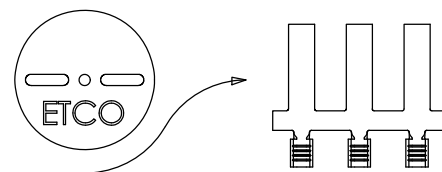
- MATERIAL: .016 THICK BRASS
#2 TEMPER (1/2 HARD)
PER ETCO METAL CODE 2-0140.
- WIRE RANGE: 20-16 AWG.

P/C	DESCRIPTION
09696	BC140-HB

Rev.	Description of Change/ SCN#	Date
-	Redrawn in SW from ACAD SCJ	12/19/12



DIRECTION EXITING TOOL,
EARS UP, TO THE BACK



DIRECTION TOWARD APPLICATOR,
EARS UP, TO THE FRONT

UNCONTROLLED COPY

<p>THIRD ANGLE PROJECTION TOLERANCES UNLESS OTHERWISE SPECIFIED INCHES: .XX - ±.030 .XXX - ±.015 ANGLES: ±5°</p>	<p>TOOL NO. 0261</p>	<p>Title: Brush Contact</p>		
		<p>DO NOT SCALE DWG.</p>	<p>Drawn By: S.Johnson</p>	<p>Date: 12/19/2012</p>
		<p>Chk'd/App'd By:</p>	<p>Scale: 8X</p>	<p>Size B</p>
		<p>Dwg. No.: BC140 cust</p>		
		<p>ETCO Incorporated Engineered Products 25 Bellows Street Warwick, RI 02888 Phone: (401) 467-2400 Fax: (401) 467-9230 www.ETCO.com</p>		