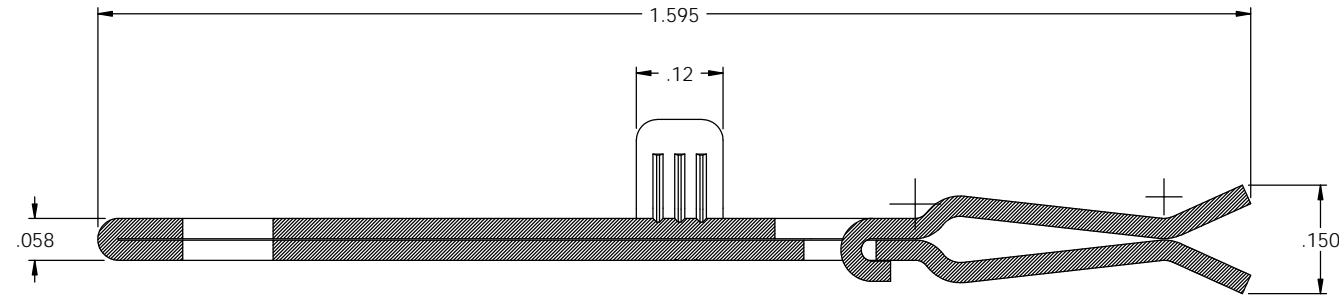


NOTES:

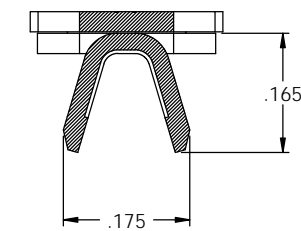
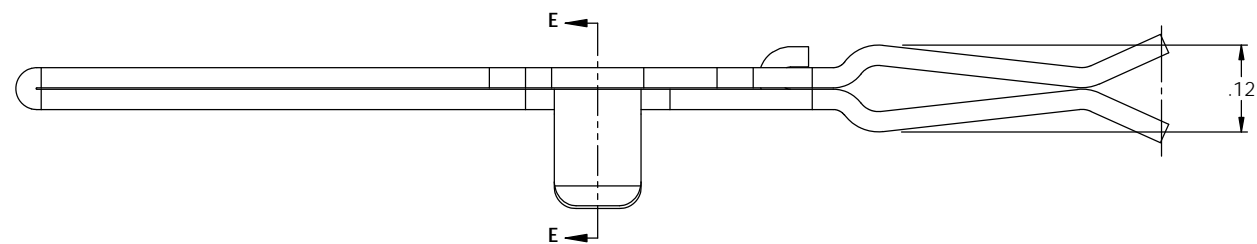
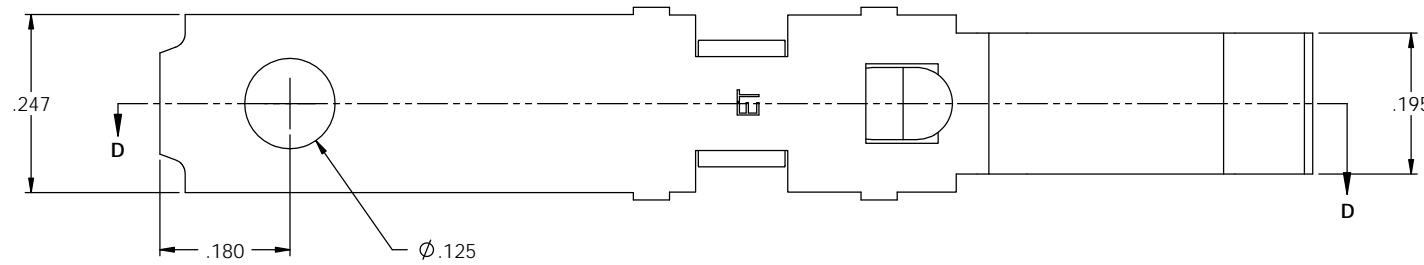
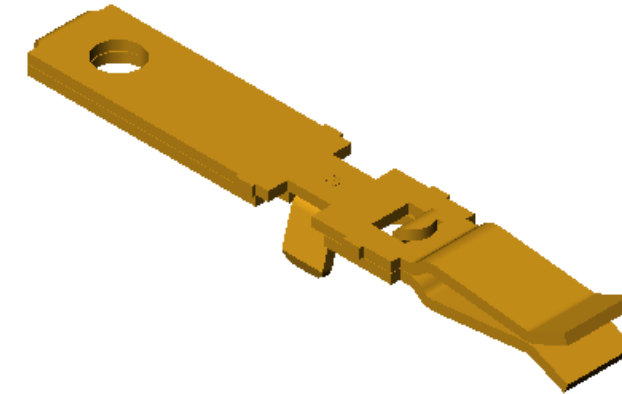
1. MATERIAL: .028 THICK C26000 BRASS; 1/2 HARD  
ANNEALED TO TEMPER; PER ETCO METAL CODE 00121.
2. WIRE RANGE: #16-#18 AWG.

P/C	DESCRIPTION	MAT'L	REV
14164	BCMF-C-HB	NOTE 1	X

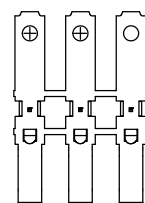
Rev.	Description of Change/ SCN#	Date
1	TRANSFER FROM CP TO EP	10-6-03
2	SCN# 102735 SCJ	10-29-04
3	ECR# 816 SCJ	11-1-11



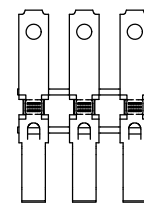
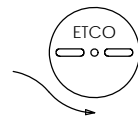
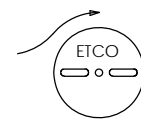
SECTION D-D  
SCALE 6 : 1



SECTION E-E  
SCALE 6 : 1



DIRECTION EXITING TOOL  
EARS DOWN, TAB TO THE BACK



DIRECTION TOWARDS APPLICATOR  
EARS UP, TAB TO THE BACK

THIS PRINT IS THE PROPERTY OF ETCO INCORPORATED. NO PART OF THIS DESIGN MAY BE USED IN ANY WAY WITHOUT WRITTEN CONSENT FROM ETCO INCORPORATED.

UNCONTROLLED COPY

<p>THIRD ANGLE PROJECTION</p>	TOOL NO.	Title: MALE/FEMALE BLADE CONTACT	
	0881	DO NOT SCALE DWG.	Date: 8/30/03
<p>TOLERANCES UNLESS OTHERWISE SPECIFIED</p> <p>INCHES: .XX - ±.030 .XXX - ±.015</p> <p>ANGLES - ±5°</p>	<p>ETCO Incorporated Engineered Products 25 Bellows Street Warwick, R.I. 02888 Phone: (401)467-2400 FAX: (401)467-9230 www.ETCO.com</p>	Drawn By: C. O'REILLY	Scale: 6X
		Chk'd/App'd By:	Size: C
Dwg. No.: BCMF			