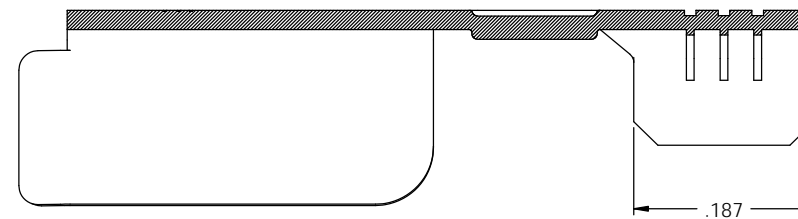
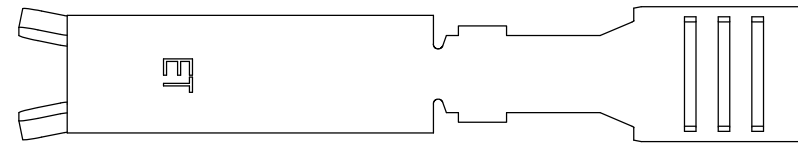


NOTES:

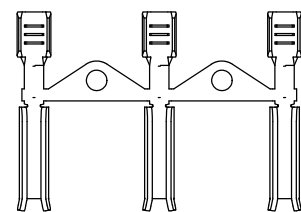
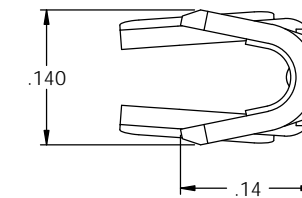
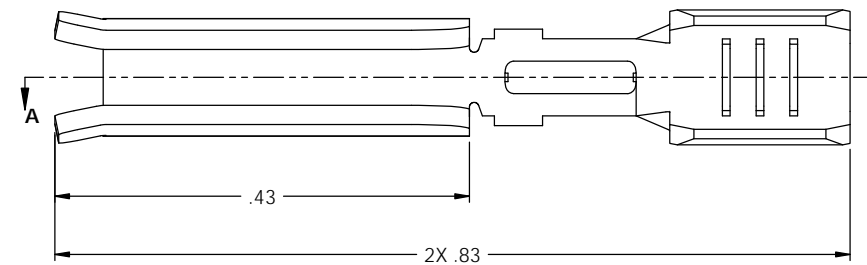
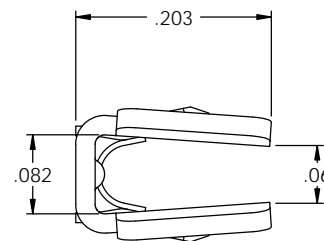
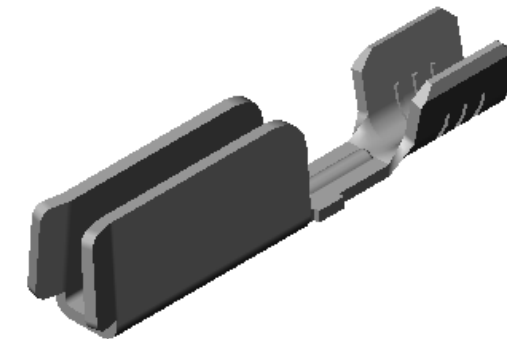
1. MATERIAL: .020 THICK C26000 BRASS; 1/2 HARD
ANNEALED TO TEMPER; PER ETCO METAL CODE 00136.
2. MATERIAL: .020 THICK C26000 PRE-TINNED BRASS; 1/2 HARD
ANNEALED TO TEMPER; PER ETCO METAL CODE 00202.
3. FOR WINDING INSTRUCTIONS SEE WI-09-10-8.
4. WIRE RANGE: #14-#18 AWG.

P/C	DESCRIPTION (1)	MAT'L
14240	BMC-C-HB	NOTE 1
14327	BMC-B-HB	NOTE 1
14328	BMC-B-THB	NOTE 2

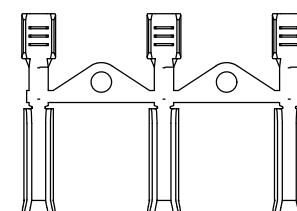
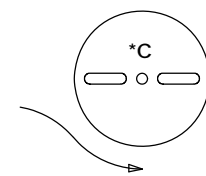
Rev.	Description of Change/ SCN#	Date
-	TRANSFER FROM CP TO EP	1-9-04
1	ECR# 816 SCJ	10-27-11



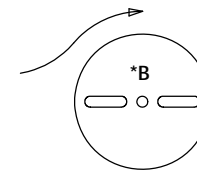
SECTION A-A
SCALE 8 : 1



DIRECTION EXITING TOOL
EARS UP, TO THE BACK
SEE NOTE 3



DIRECTION EXITING TOOL
EARS UP, TO THE BACK
SEE NOTE 3



THIS PRINT IS THE PROPERTY OF ETCO INCORPORATED. NO PART OF THIS DESIGN MAY BE USED IN ANY WAY WITHOUT WRITTEN CONSENT FROM ETCO INCORPORATED.

UNCONTROLLED COPY			
 THIRD ANGLE PROJECTION TOLERANCES UNLESS OTHERWISE SPECIFIED INCHES: .XX - ±.030 .XXX - ±.015 ANGLES - ±5°	TOOL NO. 0895	Title: BUSINESS MACHINE CONTACT	
	DO NOT SCALE DWG.	Drawn By: S. JOHNSON	Date: 1-9-04
ETCO Incorporated Engineered Products 25 Bellows Street Warwick, R.I. 02888 Phone: (401)467-2400 FAX: (401)467-9230 www.ETCO.com		Chk'd/App'd By:	Scale: 8X Size: C
Dwg. No.: BMC			