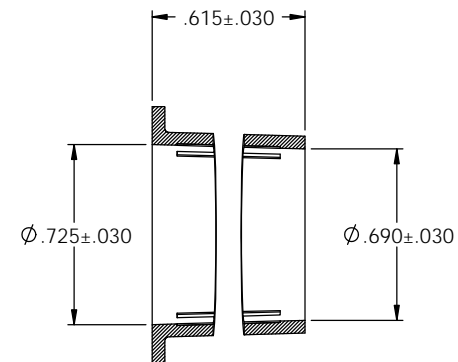
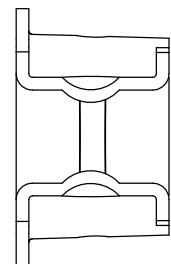
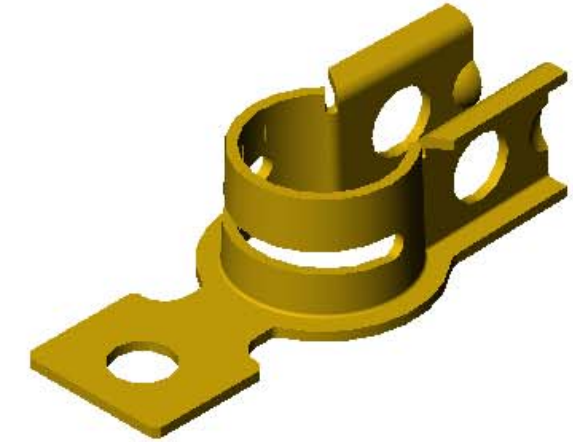
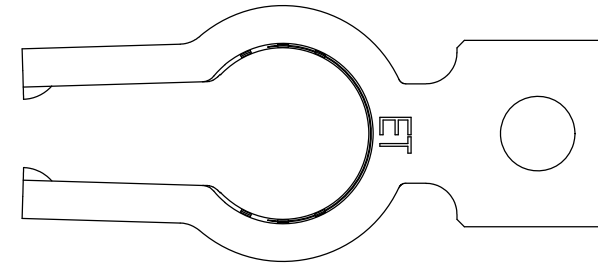


NOTES:

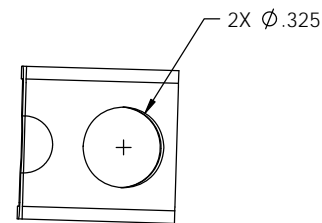
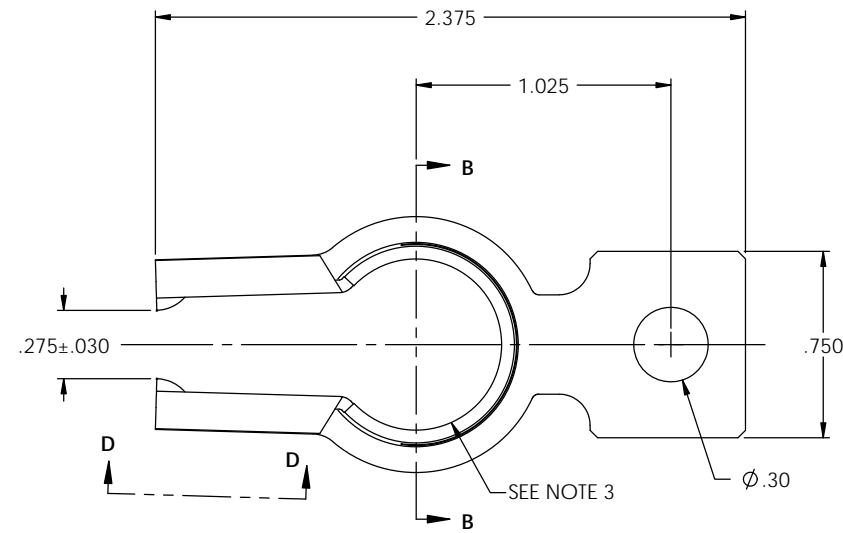
1. MATERIAL: .051 THICK C26000 BRASS; 1/4 HARD; ②
PER ETCO METAL CODE 0-0111.
2. POST PLATING: .0001-.0003 THICK BRIGHT TIN.
3. REFER TO QUALITY INSPECTION PLAN FOR RETENTION FIT.
4. FOR USE WITH A $\phi 5/16"$ BOLT.

P/C	DESCRIPTION	MAT'L	POST PLATING
82377	BPC4-1-HB-TAF	NOTE 1	NOTE 2
52085	BPC4-1-HB-TAF	NOTE 1	NOTE 2

Rev.	Description of Change/ SCN#	Date
-	SCN# 140398 APPROVED FOR MANUF. JMR	6-25-08
1	COMPLETED P/C LIST SCJ	9-11-08
2	M/C 00111 was 00099 SCJ	6-16-11
2	ECR# 5827 SCJ	12/02/19



SECTION B-B
SCALE 2 : 1



SECTION D-D
SCALE 2 : 1

UNCONTROLLED COPY

 THIRD ANGLE PROJECTION	TOOL NO. 0854	Title: BATTERY POST TERMINAL		
		DO NOT SCALE DWG.	Drawn By: S.JOHNSON	Date: 4-19-07
TOLERANCES UNLESS OTHERWISE SPECIFIED INCHES: .XX - ±.030 .XXX - ±.015 ANGLES: ±5°		ETCO Incorporated Engineered Products 25 Bellows Street Warwick, RI 02888 Phone: (401) 467-2400 Fax: (401) 467-9230 www.ETCO.com	Chk'd/App'd By:	Size: C
			Dwg. No.:	BPC4-1 cust