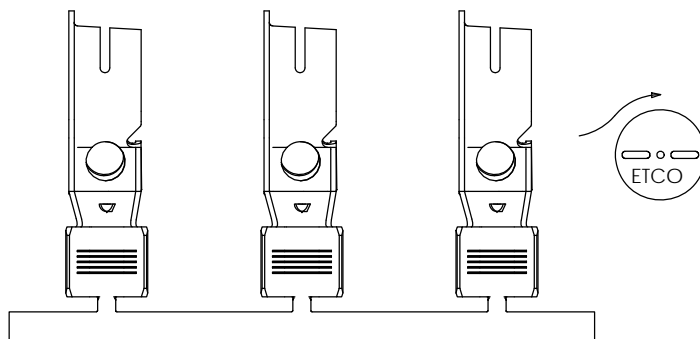
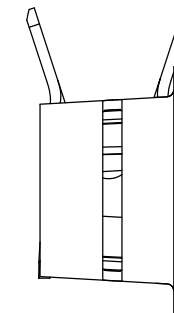
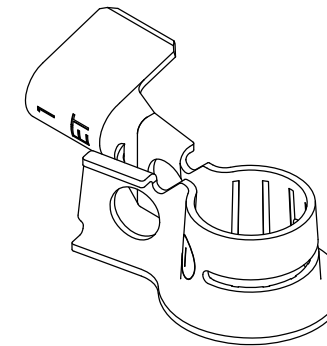
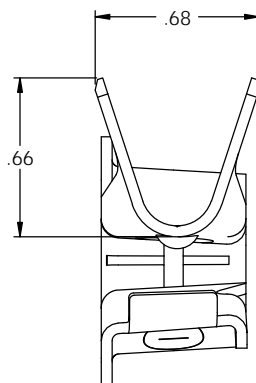
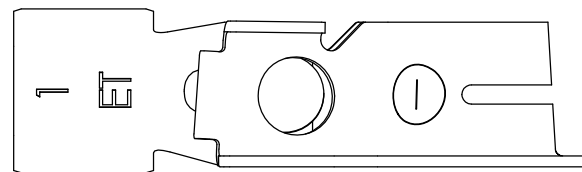
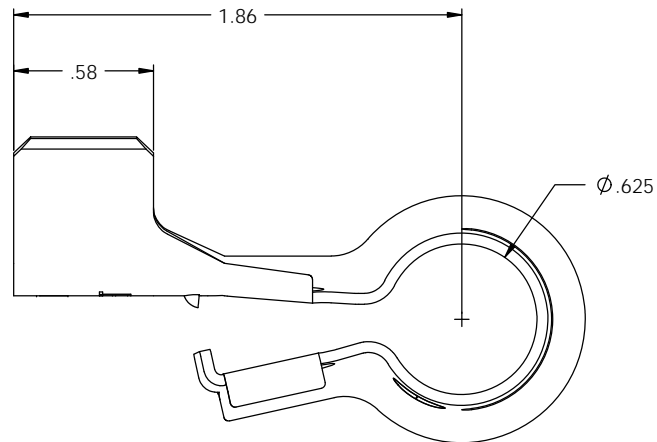
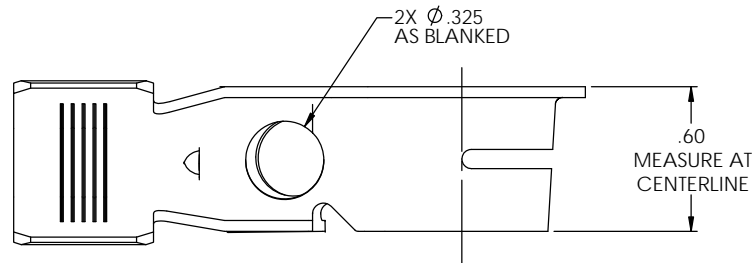
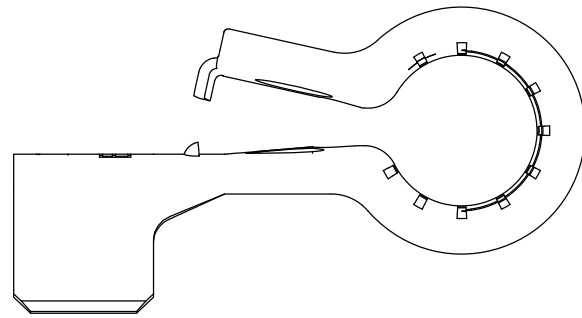
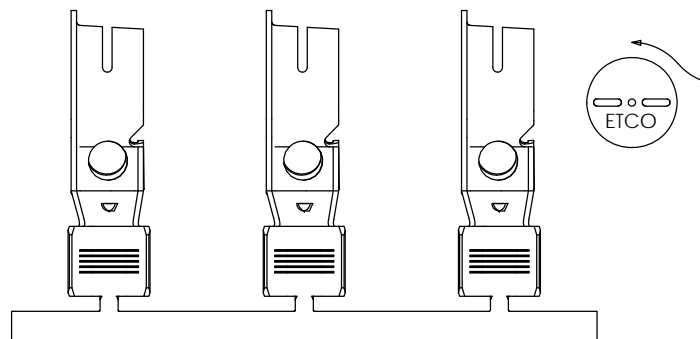


- NOTE:
 1.) MAT'L: .045 THK, BRASS,
 #2 TEMPER (HALF HARD),
 ANNEALED TO TEMPER,
 PER ETCO METAL CODE NO. 07043.
 2.) MAT'L: .045 THK, PRE-TINNED BRASS,
 #2 TEMPER (HALF HARD),
 ANNEALED TO TEMPER,
 PER ETCO METAL CODE NO. 07042.
 3.) PARTS MAY BE COATED WITH A LIGHT
 FILM OF LUBRICATION USED IN THE
 MANUFACTURING PROCESS.
 4.) WIRE RANGE: 1/0 (CMA=115,150-88,360)
 5.) FOR USE WITH $\varnothing 5/16"$ BOLT.

①



DIRECTION EXITING TOOL,
EARS UP, TO THE FRONT



DIRECTION TOWARD APPLICATOR,
FROM RIGHT, EARS UP, TO THE FRONT

P/C	DESCRIPTION	MAT'L
82315	BPC5-N-1*A-THB	NOTE 2
82412	BPC5-N-1*A-HB	NOTE 1

Rev.	Description of Change/ SCN#	Date
-	INITIAL RELEASE/SCN# 140104 SCJ	2-25-07
1	SCN# 140404 JMR	7-18-08

UNCONTROLLED COPY

 THIRD ANGLE PROJECTION	TOOL NO. 0869	Title: NEGATIVE BATTERY TERMINAL	
	DO NOT SCALE DWG.	Drawn By: S. Johnson	Date: 2-25-07
TOLERANCES UNLESS OTHERWISE SPECIFIED INCHES: XX - ± 0.30 XXX - ± 0.15 ANGLES: $\pm 5^\circ$	 ETCO	Chk'd/App'd By:	Scale: 2X Size: C
THIS PRINT IS THE PROPERTY OF ETCO INCORPORATED. NO PART OF THIS DESIGN MAY BE USED IN ANY WAY WITHOUT WRITTEN CONSENT FROM ETCO INCORPORATED.		Dwg. No.: BPC5-N-1 cust	