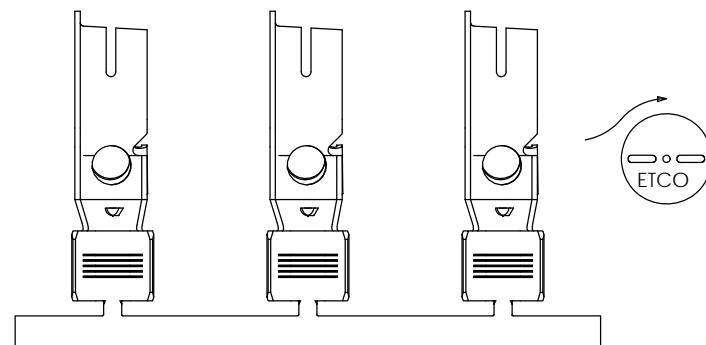
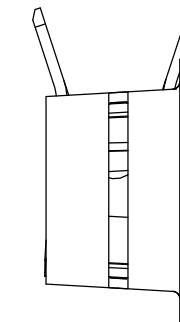
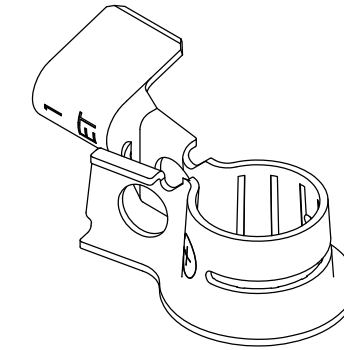
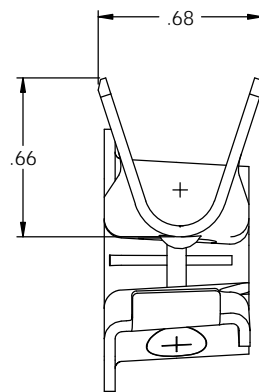
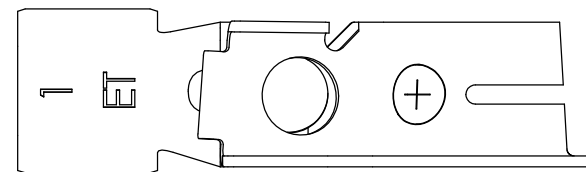
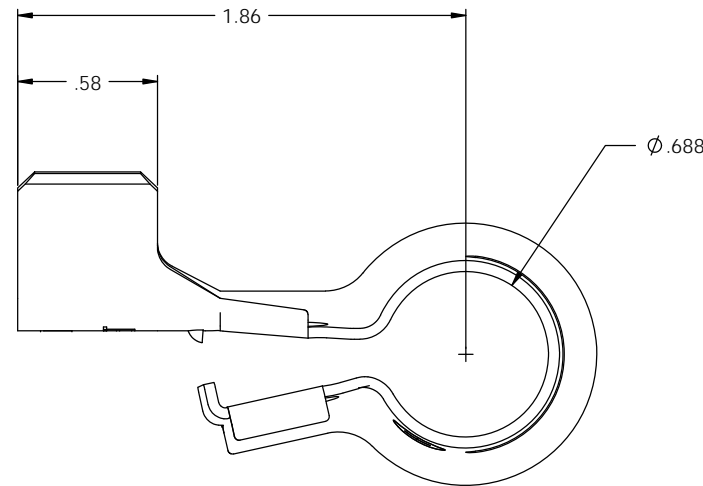
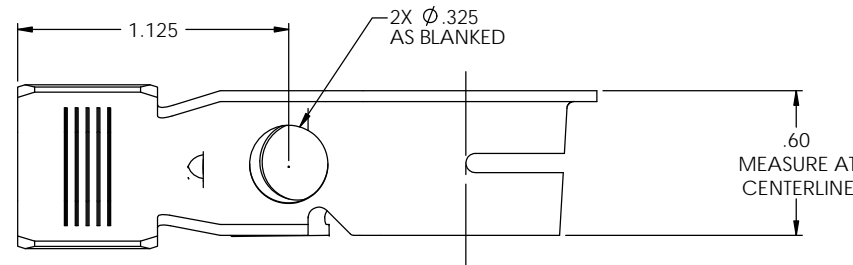
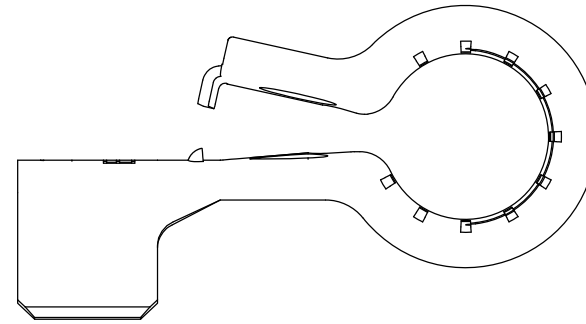


NOTE:

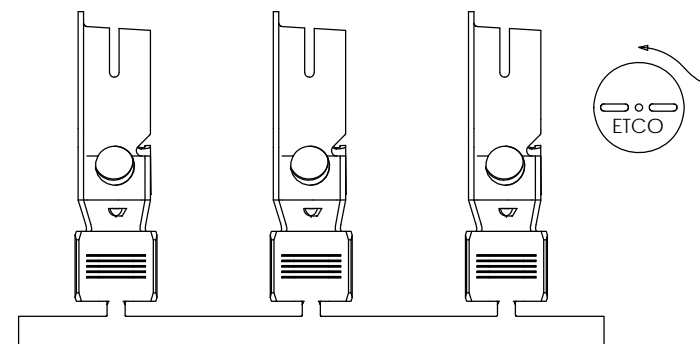
- 1.) MAT'L: .045 THK, BRASS,
#2 TEMPER (HALF HARD),
ANNEALED TO TEMPER,
PER ETCO METAL CODE NO. 07043.
- 2.) MAT'L: .045 THK, PRE-TINNED BRASS,
#2 TEMPER (HALF HARD),
ANNEALED TO TEMPER,
PER ETCO METAL CODE NO. 07042.
- 3.) PARTS MAY BE COATED WITH A LIGHT
FILM OF LUBRICATION USED IN THE
MANUFACTURING PROCESS.
- 4.) WIRE RANGE: 1/0 (CMA=115,150-88,360)
- 5.) FOR USE WITH $\varnothing 5/16"$ BOLT.

P/C	DESCRIPTION	MAT'L
82312	BPC5-P-1*A-THB	NOTE 2
82407	BPC5-P-1*A-HB	NOTE 1

Rev.	Description of Change/ SCN#	Date
-	INITIAL CUST. DWG RELEASE/ SCN# 140404	JMR 7/30/08



DIRECTION EXITING TOOL,
EARS UP, TO THE FRONT



DIRECTION TOWARD APPLICATOR,
FROM RIGHT, EARS UP, TO THE FRONT

THIS PRINT IS THE PROPERTY OF ETCO INCORPORATED. NO PART OF THIS DESIGN MAY BE USED IN ANY WAY WITHOUT WRITTEN CONSENT FROM ETCO INCORPORATED.

UNCONTROLLED COPY

 THIRD ANGLE PROJECTION	TOOL NO.	Title: POSITIVE BATTERY TERMINAL	
	0869	DO NOT SCALE DWG.	Date: 7/30/08
TOLERANCES UNLESS OTHERWISE SPECIFIED INCHES: XX - ± 0.30 XXX - ± 0.15 ANGLES: $\pm 5^\circ$	 ETCO	ETCO Incorporated Engineered Products 25 Bellows Street Warwick, RI 02888 Phone: (401) 467-2400 Fax: (401) 467-9230 www.ETCO.com	Drawn By: J. RAMALHO Chk'd/App'd By: Scale: 2X Size: C
		Dwg. No.: BPC5-P-1 cust	