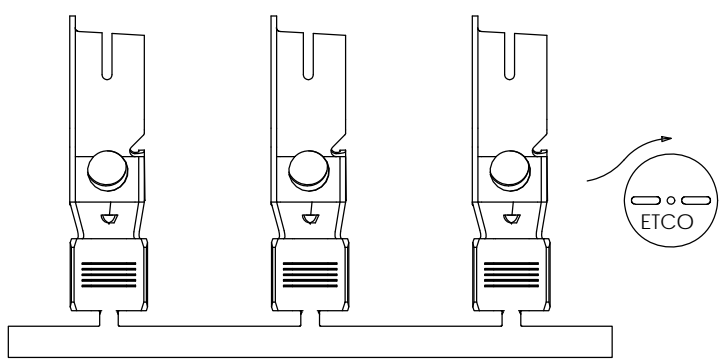
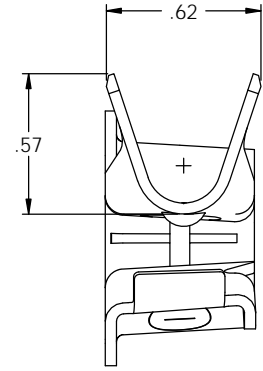
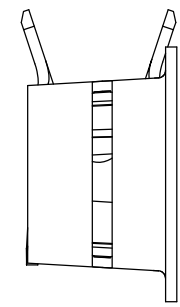
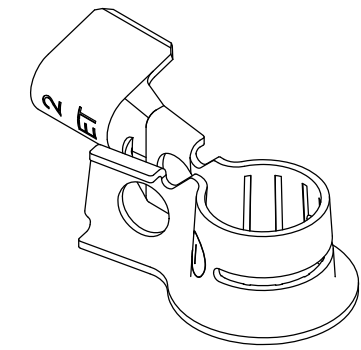
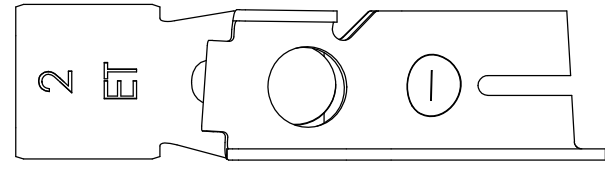
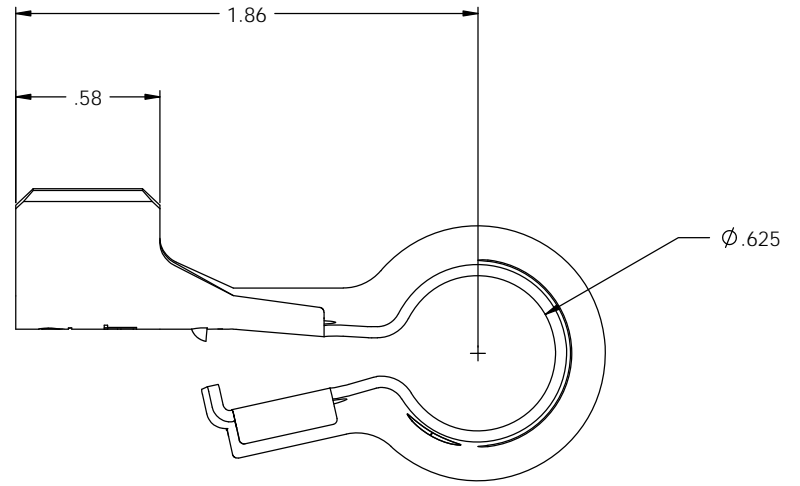
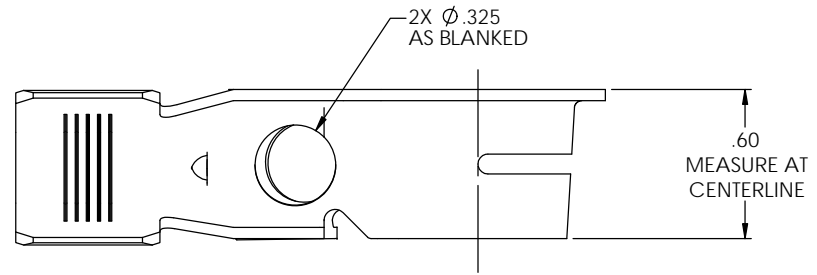
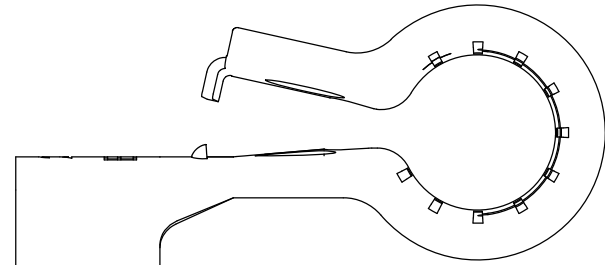


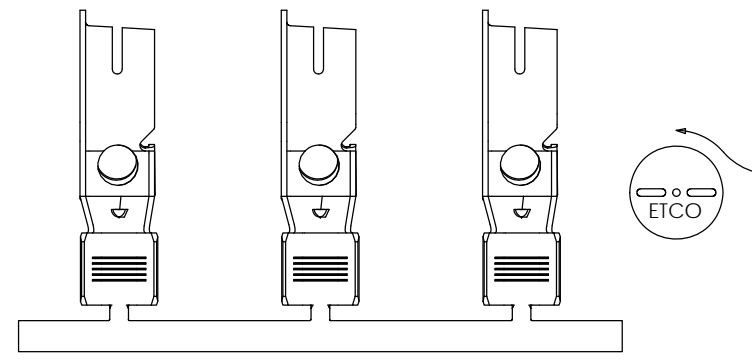
- NOTE:
 1.) MAT'L: .045 THK, BRASS,
 #2 TEMPER (HALF HARD),
 ANNEALED TO TEMPER,
 PER ETCO METAL CODE NO. 07043.
 2.) MAT'L: .045 THK, PRE-TINNED BRASS,
 #2 TEMPER (HALF HARD),
 ANNEALED TO TEMPER,
 PER ETCO METAL CODE NO. 07042.
 3.) PARTS MAY BE COATED WITH A LIGHT
 FILM OF LUBRICATION USED IN THE
 MANUFACTURING PROCESS.
 4.) WIRE RANGE: 2 AWG (CMA=78,093-63,270)
 5.) FOR USE WITH $\phi 5/16"$ BOLT. ①

P/C	DESCRIPTION	MAT'L
82316	BPC6-N-1-A-THB	NOTE 2
82410	BPC6-N-1-A-HB	NOTE 1

Rev.	Description of Change/ SCN#	Date
-	INITIAL RELEASE/SCN# 140104 SCJ	2-25-07
1	SCN# 140404 JMR	7-18-08
2	Reved to match Eng Dwg SCJ	2/26/15



DIRECTION EXITING TOOL,
EARS UP, TO THE FRONT



DIRECTION TOWARD APPLICATOR,
FROM RIGHT, EARS UP, TO THE FRONT

UNCONTROLLED COPY

 THIRD ANGLE PROJECTION	TOOL NO. 0869	Title: NEGATIVE BATTERY TERMINAL		
	DO NOT SCALE DWG.	Drawn By: S. Johnson	Date: 2-25-07	
TOLERANCES UNLESS OTHERWISE SPECIFIED INCHES: .XX - ± 0.30 .XXX - ± 0.15 ANGLES: $\pm 5^\circ$		ETCO Incorporated Engineered Products 25 Bellows Street Warwick, RI 02888 Phone: (401) 467-2400 Fax: (401) 467-9230 www.ETCO.com	Chk'd/App'd By:	Scale: 2X
		Dwg. No.: BPC6-N-1 cust		Size: C