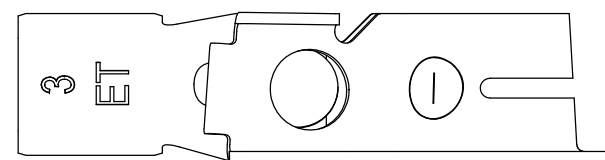
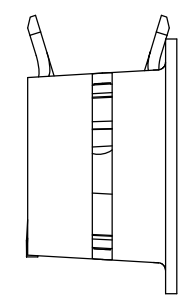
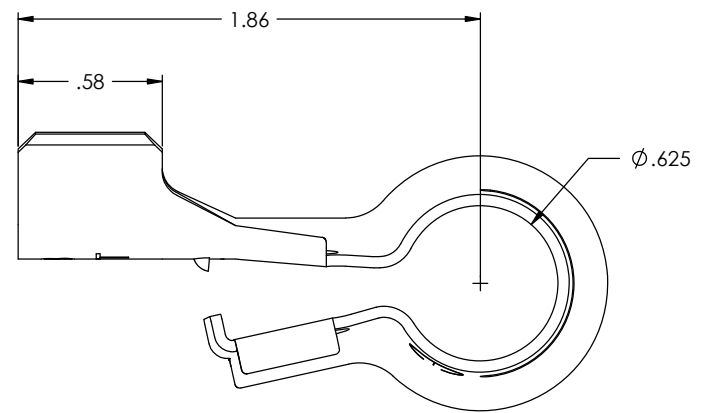
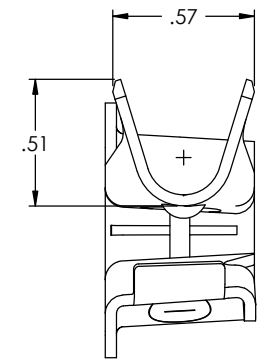
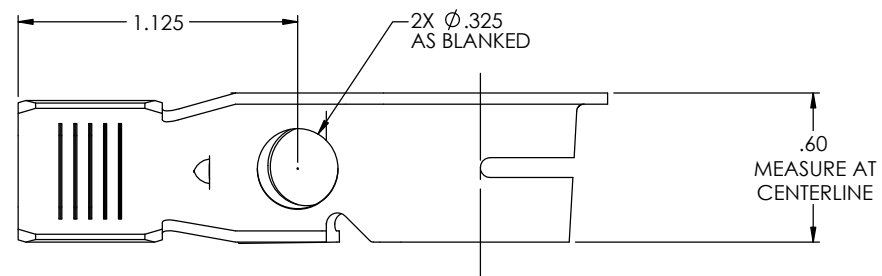
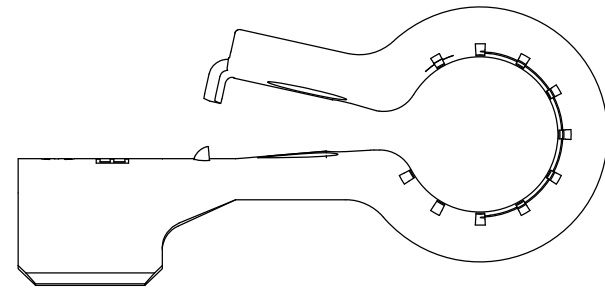


- NOTE:
 1.) MAT'L: .045 THK, BRASS, #2 TEMPER (HALF HARD), ANNEALED TO TEMPER, PER ETCO METAL CODE NO. 07043.
 2.) MAT'L: .045 THK, PRE-TINNED BRASS, #2 TEMPER (HALF HARD), ANNEALED TO TEMPER, PER ETCO METAL CODE NO. 07042.
 3.) PARTS MAY BE COATED WITH A LIGHT FILM OF LUBRICATION USED IN THE MANUFACTURING PROCESS.
 4.) WIRE RANGE: 4 - 6 AWG
 5.) FOR USE WITH $\phi 5/16"$ BOLT.
 6.) PARTS PRODUCED IN LOOSE PIECE FORM.

P/C	DESCRIPTION	MAT'L
82318	BPC7-N-1-THB-X	NOTE 2

Rev.	Description of Change/ SCN#	Date
-	Approved For Manufacturing SC	6/19/18
1	ECR #7185 SMK	6-22-23
2	ECR #7214 SMK	7-21-23



UNCONTROLLED COPY

 THIRD ANGLE PROJECTION	TOOL NO. 0869	Title: NEGATIVE BATTERY TERMINAL			
		DO NOT SCALE DWG.	Drawn By: S. Johnson	Date: 1/09/17	
TOLERANCES UNLESS OTHERWISE SPECIFIED INCHES: .XX - ± 0.30 .XXX - ± 0.15 ANGLES: $\pm 5^\circ$		ETCO Incorporated Engineered Products 25 Bellows Street Warwick, RI 02888 Phone: (401) 467-2400 Fax: (401) 467-9230 www.ETCO.com	Design Control By: ETCO	Scale: 2X	Size C
		Dwg. No.: BPC7-N-1 loose pc Cust			