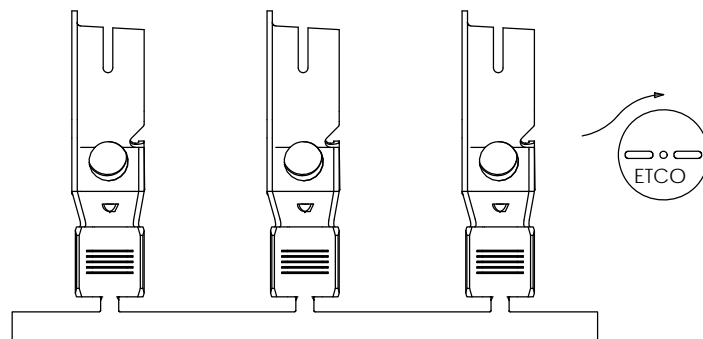
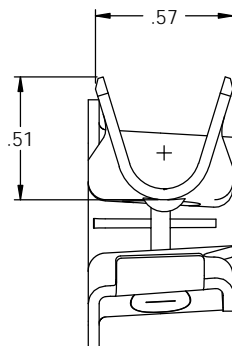
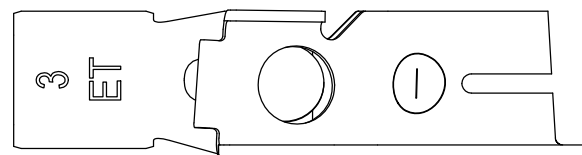
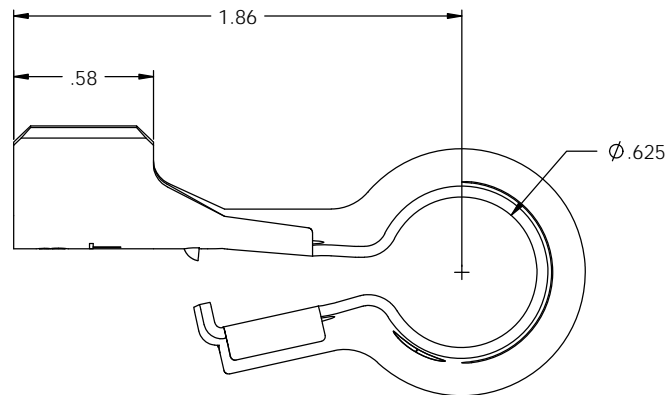
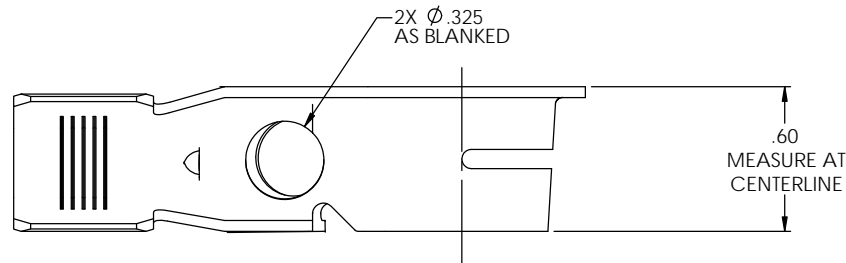
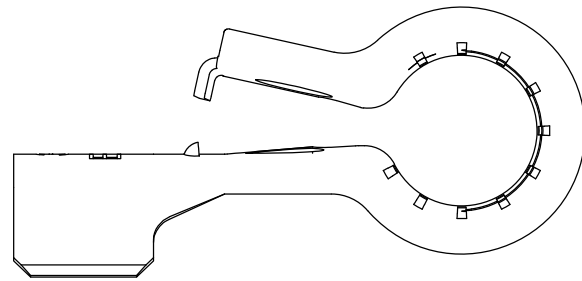


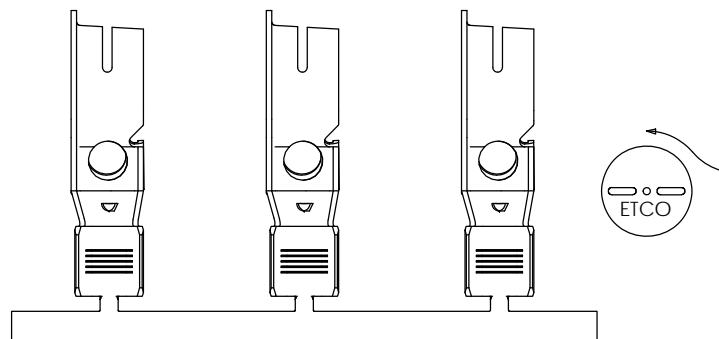
NOTE:

- 1.) MAT'L: .045 THK, BRASS,
#2 TEMPER (HALF HARD),
ANNEALED TO TEMPER,
PER ETCO METAL CODE NO. 07043.
- 2.) MAT'L: .045 THK, PRE-TINNED BRASS,
#2 TEMPER (HALF HARD),
ANNEALED TO TEMPER,
PER ETCO METAL CODE NO. 07042.
- 3.) PARTS MAY BE COATED WITH A LIGHT
FILM OF LUBRICATION USED IN THE
MANUFACTURING PROCESS.
- 4.) WIRE RANGE: 4 AWG (CMA=46,703-25,910)
- 5.) FOR USE WITH $\phi 5/16"$ BOLT.

①



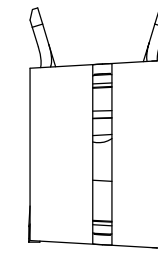
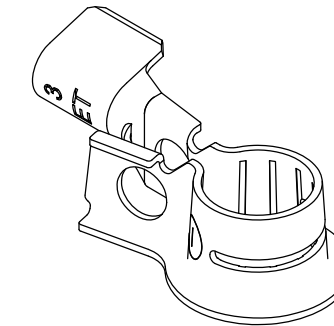
DIRECTION EXITING TOOL,
EARS UP, TO THE FRONT



DIRECTION TOWARD APPLICATOR,
FROM RIGHT, EARS UP, TO THE FRONT

P/C	DESCRIPTION	MAT'L
82317	BPC7-N-1*A-THB	NOTE 2
82411	BPC7-N-1*A-HB	NOTE 1

Rev.	Description of Change/ SCN#	Date
-	INITIAL RELEASE/SCN# 140104 SCJ	2-25-07
1	SCN# 140404 JMR	7-18-08



UNCONTROLLED COPY

 THIRD ANGLE PROJECTION	TOOL NO.	Title: NEGATIVE BATTERY TERMINAL	
	0869	DO NOT SCALE DWG.	Date: 2-25-07
TOLERANCES UNLESS OTHERWISE SPECIFIED INCHES: XX - ± 0.30 XXX - ± 0.15 ANGLES: $\pm 5^\circ$	 ETCO	ETCO Incorporated Engineered Products 25 Bellows Street Warwick, RI 02888 Phone: (401) 467-2400 Fax: (401) 467-9230 www.ETCO.com	Drawn By: S. Johnson Chk'd/App'd By: Scale: 2X Size: C
		Dwg. No.: BPC7-N-1 cust	