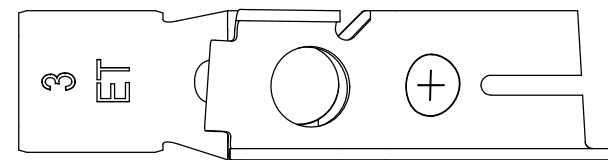
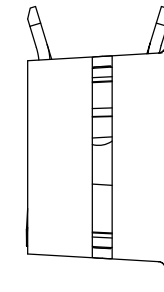
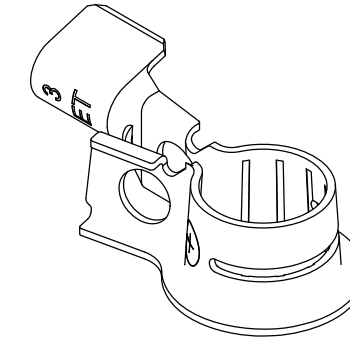
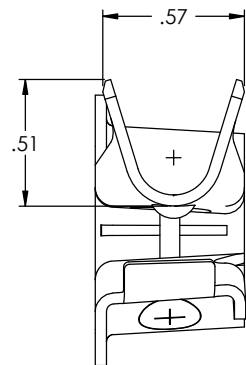
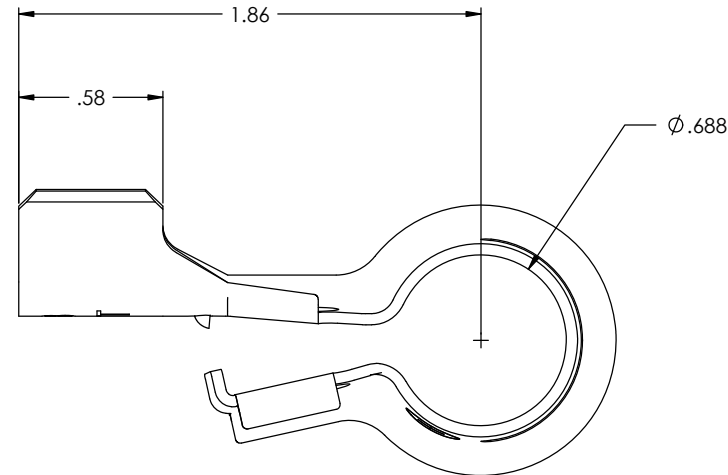
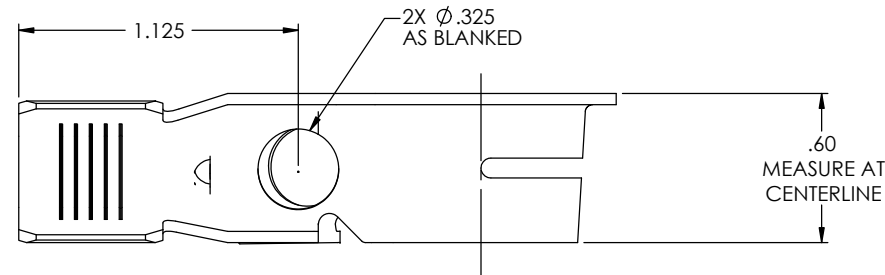
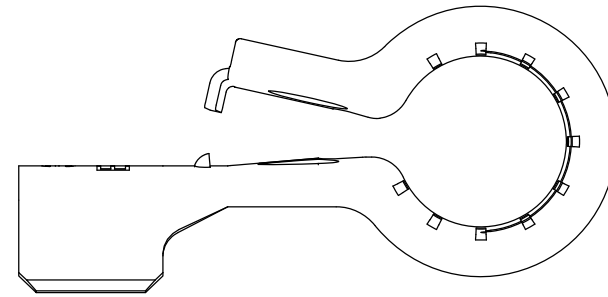


- NOTE:
 1.) MAT'L: .045 THK, BRASS, #2 TEMPER (HALF HARD), ANNEALED TO TEMPER, PER ETCO METAL CODE NO. 2-7043.
 2.) MAT'L: .045 THK, PRE-TINNED BRASS, #2 TEMPER (HALF HARD), ANNEALED TO TEMPER, PER ETCO METAL CODE NO. 2-7042.
 3.) PARTS MAY BE COATED WITH A LIGHT FILM OF LUBRICATION USED IN THE MANUFACTURING PROCESS.
 4.) WIRE RANGE: 4 - 6 AWG
 5.) FOR USE WITH $\phi 5/16"$ BOLT.
 6.) PARTS ARE PRODUCED IN LOOS PIECE FORM.

Rev.	Description of Change/SCN#	Date
-	Approved For Manufacturing SCJ	6/19/18
1	ECR #7185	SMK 6-22-23
2	ECR #7213	SMK 7-21-23



UNCONTROLLED COPY

 THIRD ANGLE PROJECTION	TOOL NO. 0869	Title: POSITIVE BATTERY TERMINAL		
		DO NOT SCALE DWG.	Drawn By: S.Johnson	Date: 6/12/18
TOLERANCES UNLESS OTHERWISE SPECIFIED INCHES: .XX - $\pm .030$.XXX - $\pm .015$ ANGLES: $\pm 5^\circ$		ETCO Incorporated Engineered Products 25 Bellows Street Warwick, RI 02888 Phone: (401) 467-2400 Fax: (401) 467-9230 www.ETCO.com	Chk'd/App'd By:	Scale: 4X Size: C
		Dwg. No.: BPC7-P-1 loose pc cust		