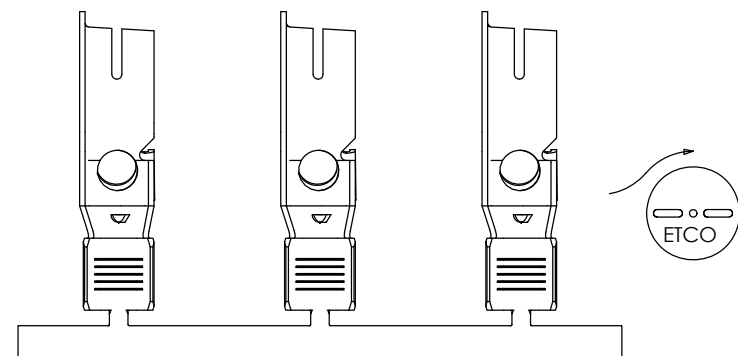
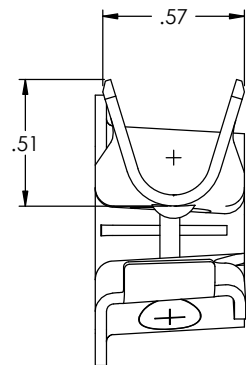
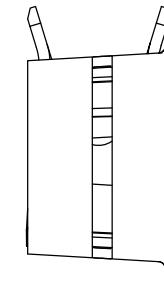
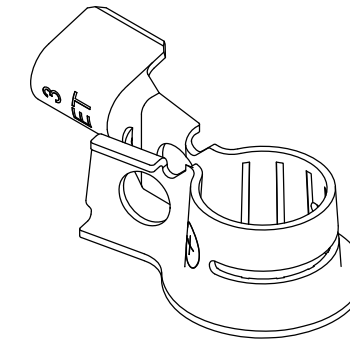
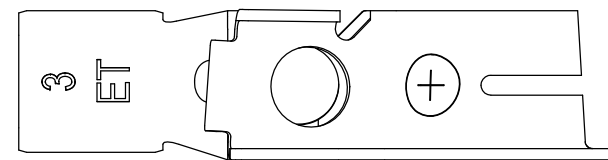
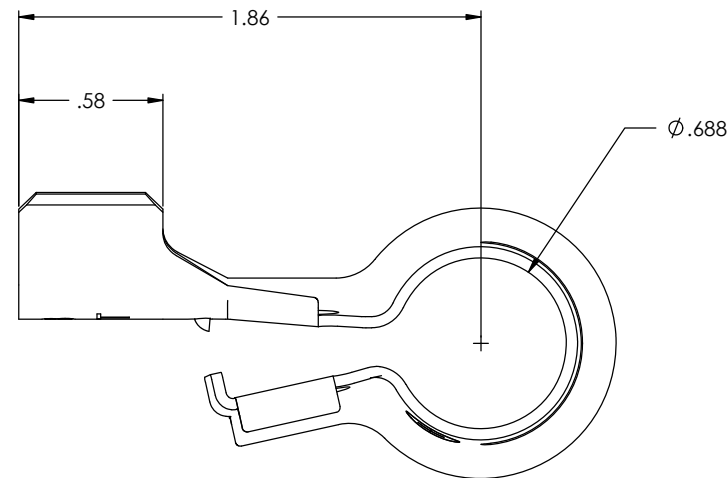
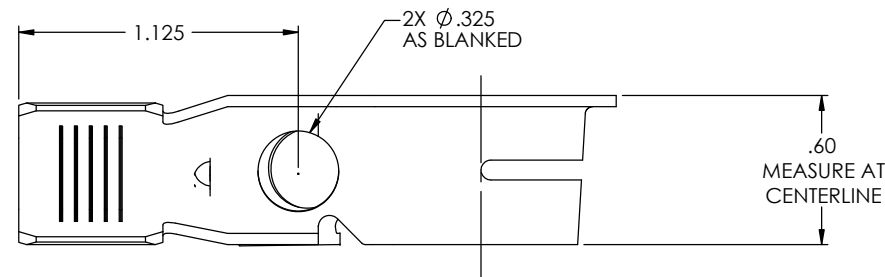
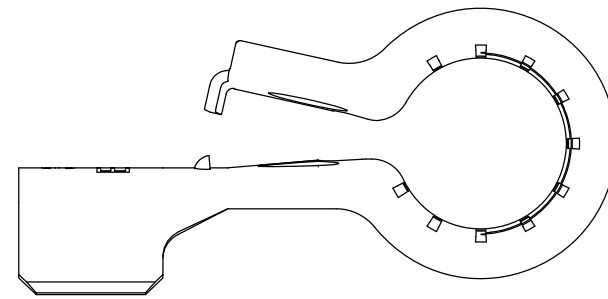


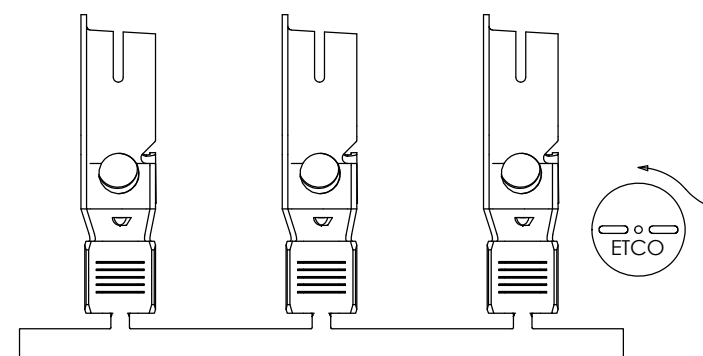
NOTE:

- 1.) MAT'L: .045 THK, BRASS, #2 TEMPER (HALF HARD), ANNEALED TO TEMPER, PER ETCO METAL CODE NO. 2-7043.
- 2.) MAT'L: .045 THK, PRE-TINNED BRASS, #2 TEMPER (HALF HARD), ANNEALED TO TEMPER, PER ETCO METAL CODE NO. 2-7042.
- 3.) PARTS MAY BE COATED WITH A LIGHT FILM OF LUBRICATION USED IN THE MANUFACTURING PROCESS.
- 4.) WIRE RANGE: 4 - 6 AWG
- 5.) FOR USE WITH $\phi 5/16$ " BOLT.

Rev.	Description of Change/SCN#	Date
-	INITIAL RELEASE CUST. DWG REL./SCN# 140404	JMR 7/30/08
2	Reved to match Eng Dwg.	SCJ 2/26/15
3	ECR #7185	SMK 6-22-23



DIRECTION EXITING TOOL,
EARS UP, TO THE FRONT



DIRECTION TOWARD APPLICATOR,
FROM RIGHT, EARS UP, TO THE FRONT

UNCONTROLLED COPY					
 THIRD ANGLE PROJECTION	TOOL NO. 0869	Title: POSITIVE BATTERY TERMINAL			
		DO NOT SCALE DWG.	Drawn By: J.RAMALHO	Date: 7-30-08	Chk'd/App'd By:
TOLERANCES UNLESS OTHERWISE SPECIFIED INCHES: .XX - $\pm .030$.XXX - $\pm .015$ ANGLES: $\pm 5^\circ$		ETCO Incorporated Engineered Products 25 Bellows Street Warwick, RI 02888 Phone: (401) 467-2400 Fax: (401) 467-9230 www.ETCO.com	Dwg. No.:	Scale: 4X	Size: C
BPC7-P-1 cust					