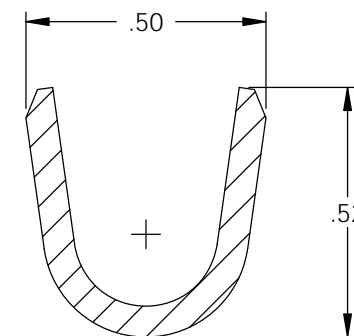
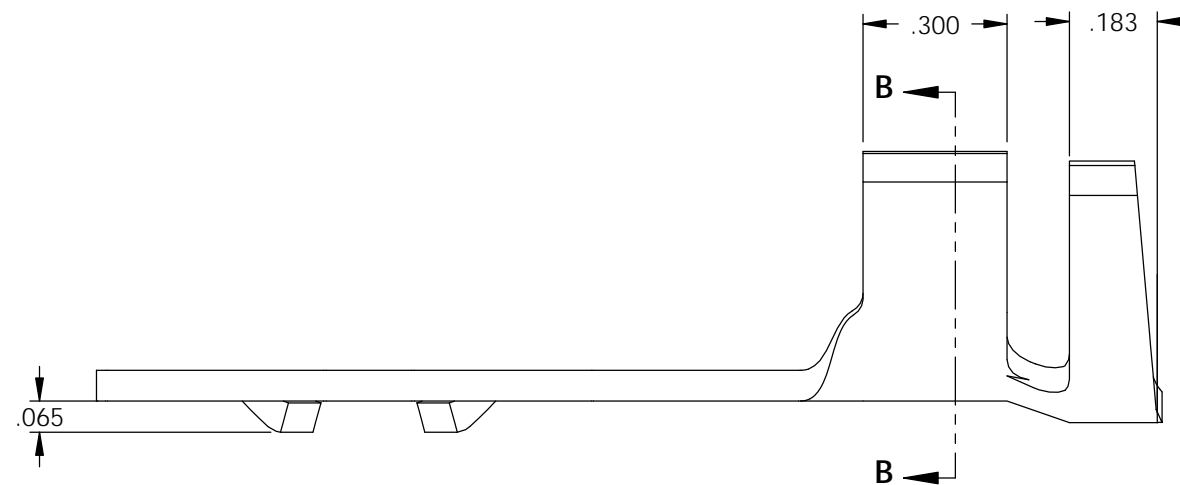
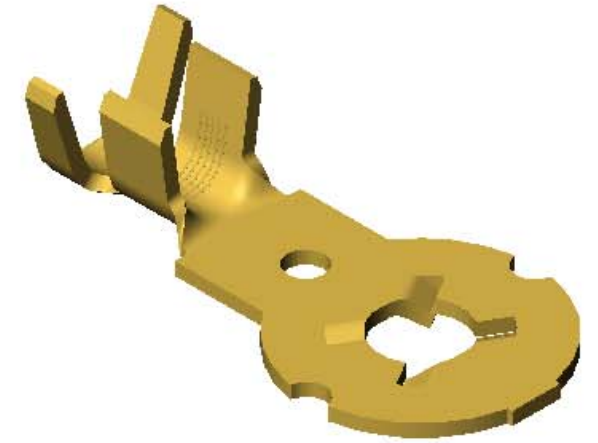
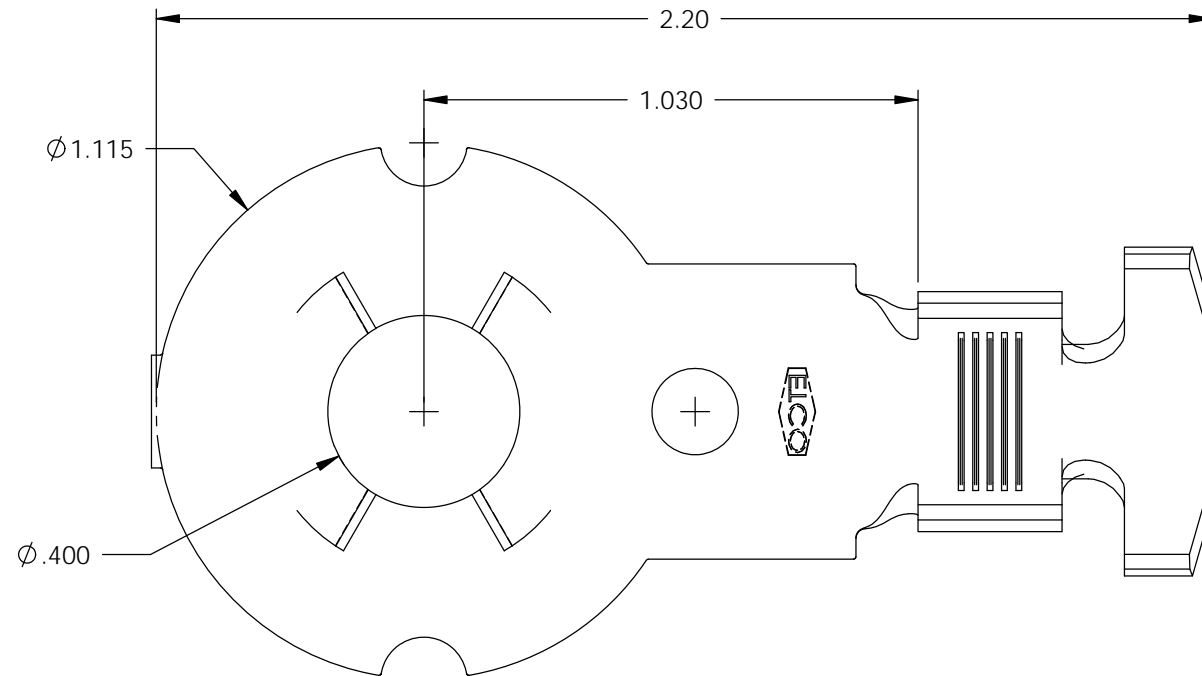


NOTE:

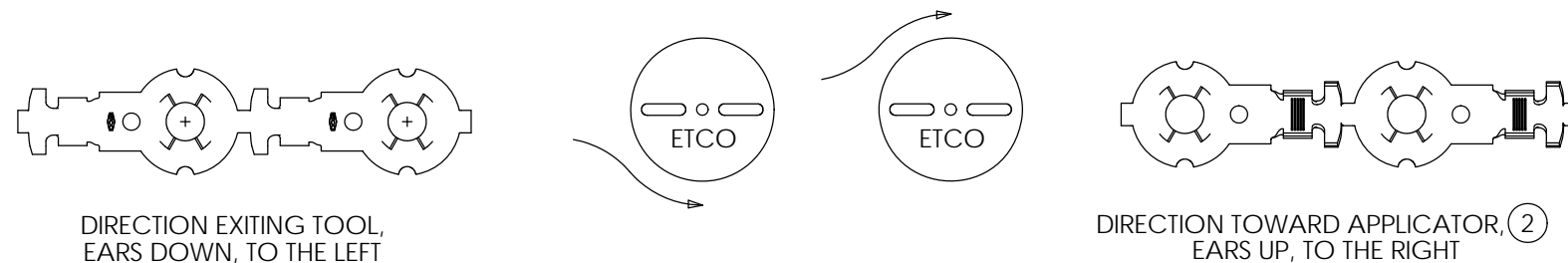
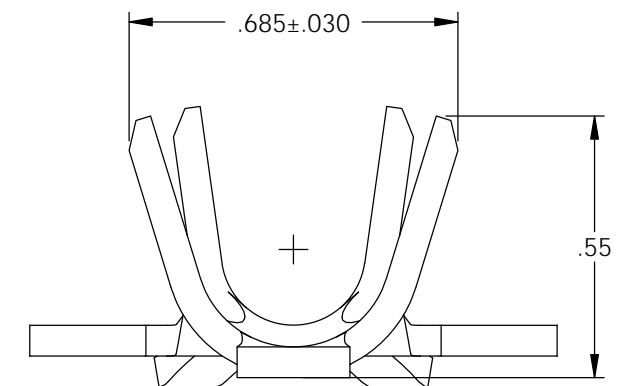
- 1.) MAT'L: .064 THK, BRASS, #2 TEMPER (HALF HARD), ANNEALED TO TEMPER, PER ETCO METAL CODE NO. 1-7034.
- 2.) MAT'L: .064 THK, PRE-TINNED BRASS, #2 TEMPER (HALF HARD), ANNEALED TO TEMPER, PER ETCO METAL CODE NO. 1-7036.
- 3.) PARTS MAY BE COATED WITH A LIGHT FILM OF LUBRICATION USED IN THE MANUFACTURING PROCESS.
- 4.) WIRE RANGE: 21229-54433 CMA.
- 5.) INSUL RANGE: ϕ .314-.390

P/C	DESCRIPTION	MAT'L
82309	BT200E-THB	NOTE 2
82310	BT200E-HB	NOTE 1

Rev.	Description of Change/ SCN#	Date
1	SCN# 103051 SCJ	9-14-05
2	ECR# 2597 SCJ	10/28/13
3	ECR# 4332 SCJ	8/15/16



SECTION B-B
SCALE 2.5 : 1



THIS PRINT IS THE PROPERTY OF ETCO INCORPORATED. NO PART OF THIS DESIGN MAY BE USED IN ANY WAY WITHOUT WRITTEN CONSENT FROM ETCO INCORPORATED.

UNCONTROLLED COPY

<p>THIRD ANGLE PROJECTION TOLERANCES UNLESS OTHERWISE SPECIFIED INCHES: .XX - ±.030 .XXX - ±.015 ANGLES: ±5°</p>	<p>TOOL NO. 0842</p>	<p>Title: BATTERY TERMINAL</p>		
		<p>DO NOT SCALE DWG.</p>	<p>Drawn By: S. JOHNSON</p>	<p>Date: 9-14-05</p>
<p>ETCO Incorporated Engineered Products 25 Bellows Street Warwick, RI 02888 Phone: (401) 467-2400 Fax: (401) 467-9230 www.ETCO.com</p>		<p>Chk'd/App'd By:</p>	<p>Scale: 5:2</p>	<p>Size B</p>
		<p>Dwg. No.:</p>	<p>BT200E</p>	