

Top Post Battery Terminals

DESCRIPTION

Top Post Battery Terminals for use in automotive applications.

ONLINE SEARCHABLE

PRODUCT

SPECIFICATIONS INCLUDE

Product Code

Wire Range(s)

Insulation Range

Stock Thickness

Metal (available)

Common Mating Part

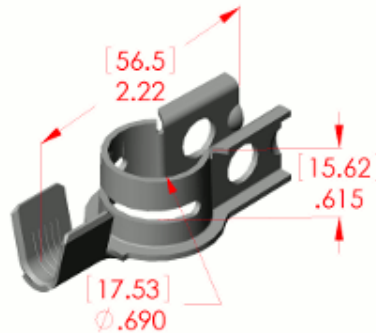
Applicator

Parts Per Reel

Parts Per Carton

SAMPLE APPLICATIONS

Automotive



Sample image actual product may vary

ETCO's standard products consistently rank at or near the top in every major precision stamping manufacturing category. The majority of ETCO products are UL approved and are backed with ETCO's standard product life guarantee. We inspect every item that leaves our warehouses in North America, Asia and Europe.

Our pricing is competitive for these products with flexibility in mind for higher quantity orders. We provide flexible shipping solutions support and payment terms to meet your supply chain needs.

- A full line of heavy-duty lead-free battery post terminals that meet SAE specifications and are supplied in strip form for termination on automatic equipment
- The universal post style fits conventional automotive batteries
- Contact ETCO for current availability and pricing

Complete product information for this specific product line can be found at <http://products.etco.com>.

Contact your ETCO representative for more information or send an e-mail to sales@etco.com.