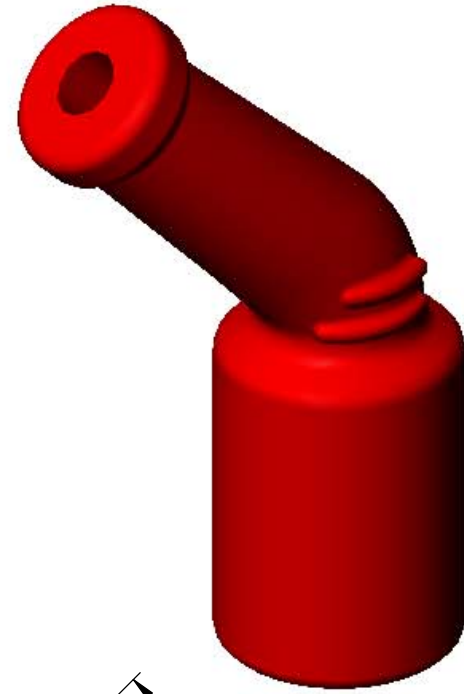


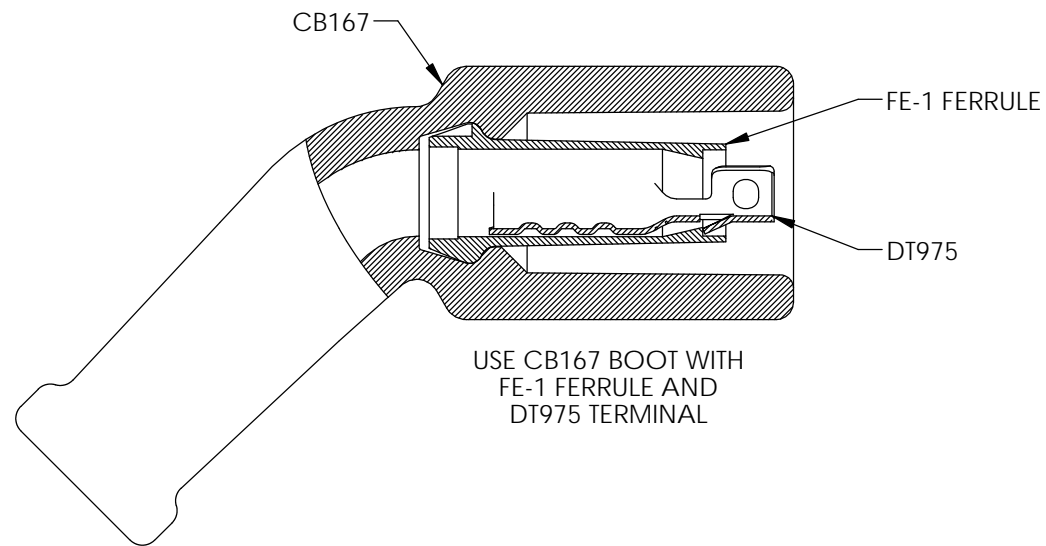
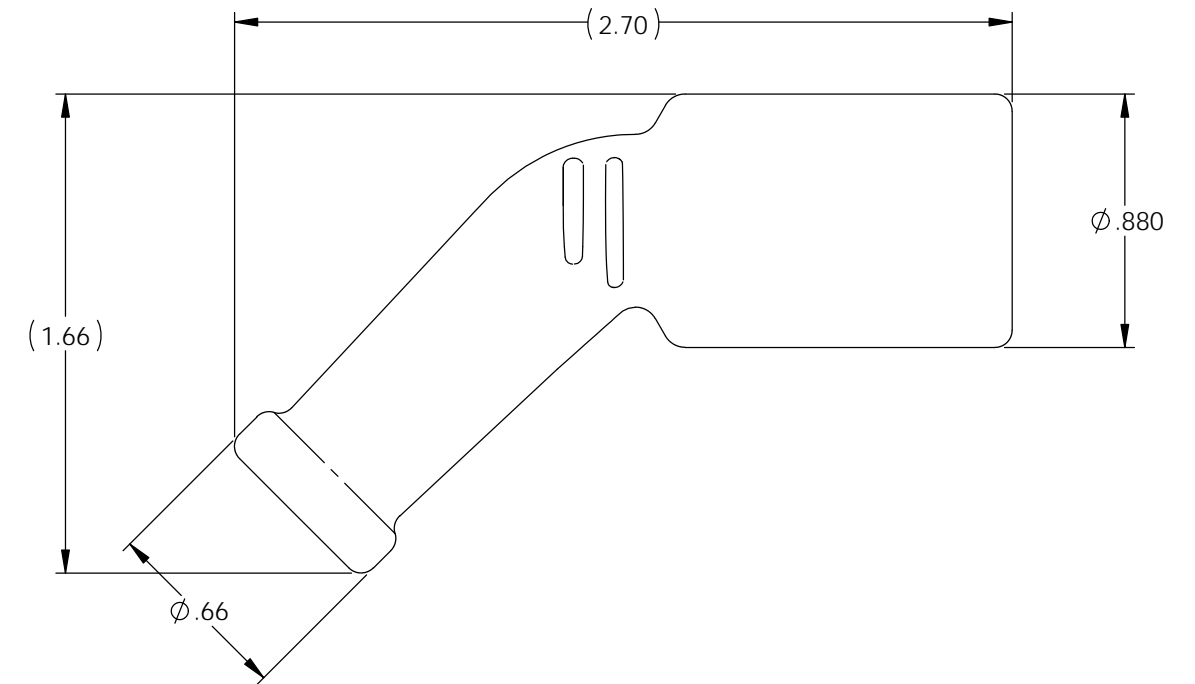
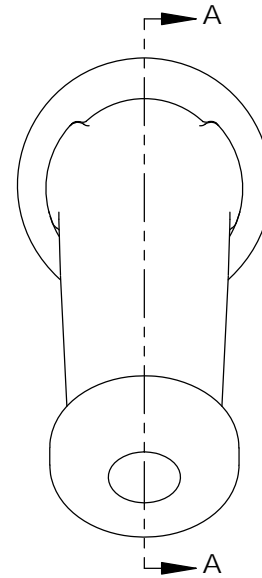
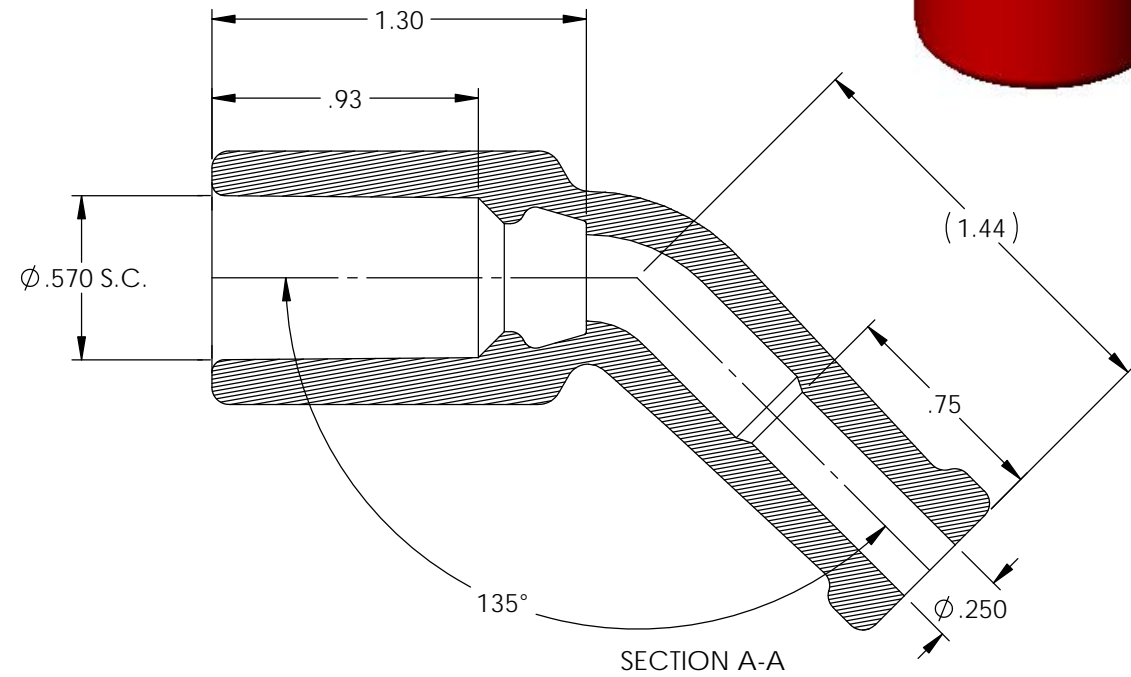
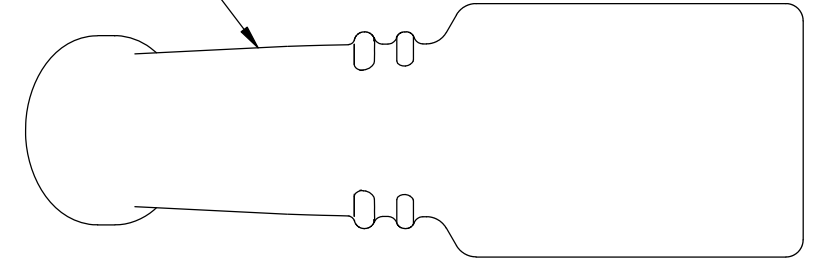
P/C	DESCRIPTION	MAT'L	COLOR	TEMPERATURE
18080	CB167-BS	SILICONE	BLACK	400°
	CB167-RS	SILICONE	RED	400°

Rev.	Description of Change/ SCN#	Date
1	Redrawn in SW for ACAD Org.Eng.Dwg.Date: 1/23/03	10/17/19

NOTE: FOR MAXIMUM PERFORMANCE AND RELIABILITY,
ALWAYS USE ETCO ENGINEERED IGNITION TERMINALS
WITH ETCO AUTOMOTIVE INSULATORS.



DUROMETER TO BE TAKEN IN THIS AREA USING
SHORE A-2 DUROMETER.
(SEE FINISHED PARTS: MAT'L/DUROMETER SPEC.)



UNCONTROLLED COPY

 THIRD ANGLE PROJECTION TOLERANCES UNLESS OTHERWISE SPECIFIED INCHES: .XX - ±.030 .XXX - ±.015 ANGLES: ±2°	TOOL NO. 2235	Title: 135° Coil Boot		
	 ETCO	DO NOT SCALE DWG.	Drawn By: S.Johnson	Date: 10/17/19
		Design Control By: ETCO	Scale: 3:2	Size B
		Dwg. No.: CB167 cust		
		ETCO Incorporated Engineered Products 25 Bellows Street Warwick, RI 02888 Phone: (401) 467-2400 Fax: (401) 467-9230 www.ETCO.com		