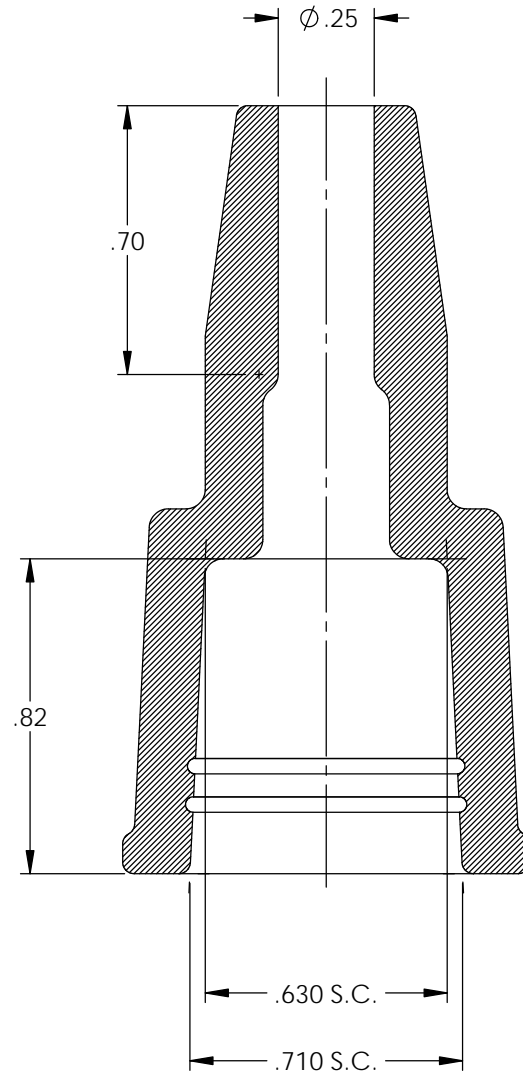
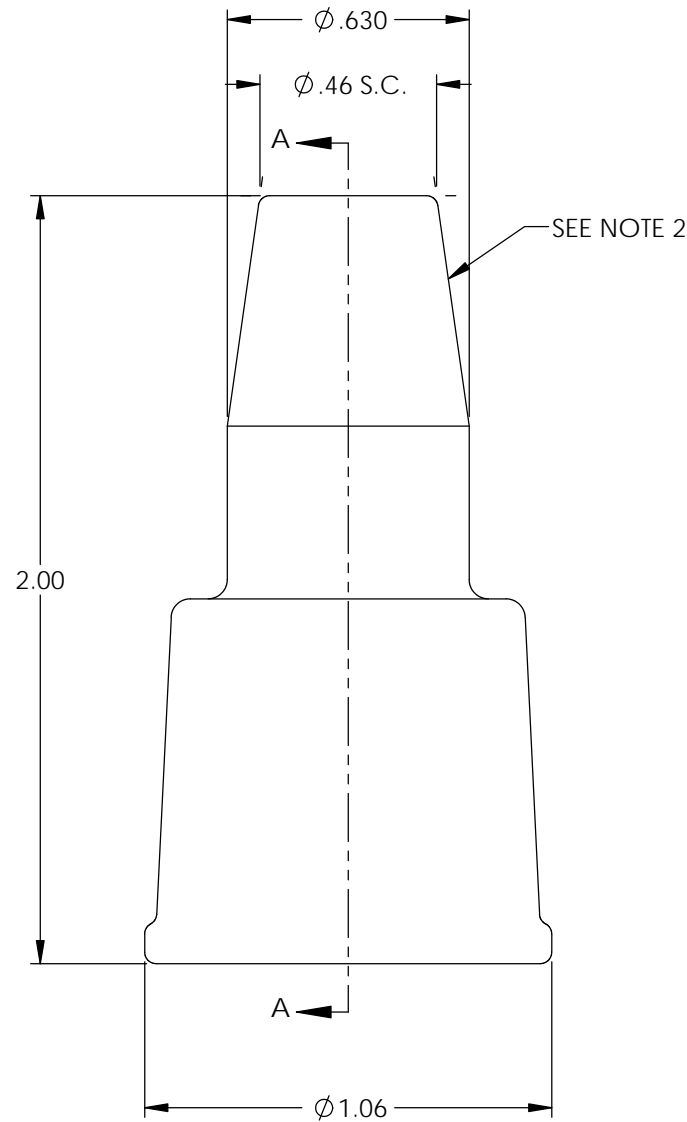


NOTES:

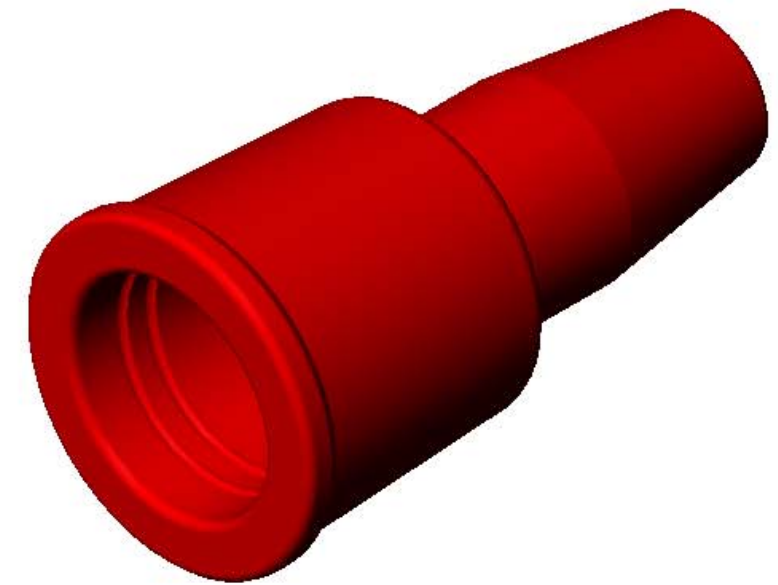
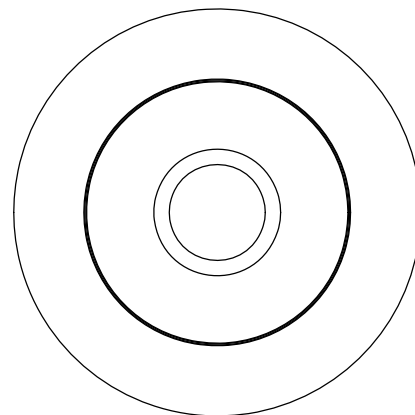
1. MATERIAL: SILICONE (TEMPERATURE: 400 °).
2. DUROMETER TO BE TAKEN IN THIS AREA USING A-2 DUROMETER. SEE FINISHED PARTS: MAT'L/DUROMETER SPEC.
3. FOR MAXIMUM PERFORMANCE AND RELIABILITY, ALWAYS USE ETCO ENGINEERED IGNITOR TERMINALS WITH ETCO AUTOMOTIVE INSULATORS.

Rev.	Description of Change/ SCN#	Date
1	Redrawn in SW from ACAD Org.Eng.Dwg.Date: 9/21/92	2/14/19

P/C	DESCRIPTION	MAT'L	COLOR
18003	CB4-RS	NOTE 1	RED
18004	CB4-BS	NOTE 1	BLACK



SECTION A-A



# UNCONTROLLED COPY

<p>THIRD ANGLE PROJECTION TOLERANCES UNLESS OTHERWISE SPECIFIED INCHES: .XX - ±.030 .XXX - ±.015 ANGLES: ±5°</p>	<p>MOLD NO.</p> <p><b>2159</b></p>	<p>Title:</p> <p><b>Coil Boot</b></p>	
		<p>DO NOT SCALE DWG.</p> <p>ETCO Incorporated Engineered Products 25 Bellows Street Warwick, RI 02888 Phone: (401) 467-2400 Fax: (401) 467-9230 www.ETCO.com</p>	<p>Drawn By: S.Johnson</p> <p>Design Control By: ETCO</p> <p>Dwg. No.:</p>

CB4 cust