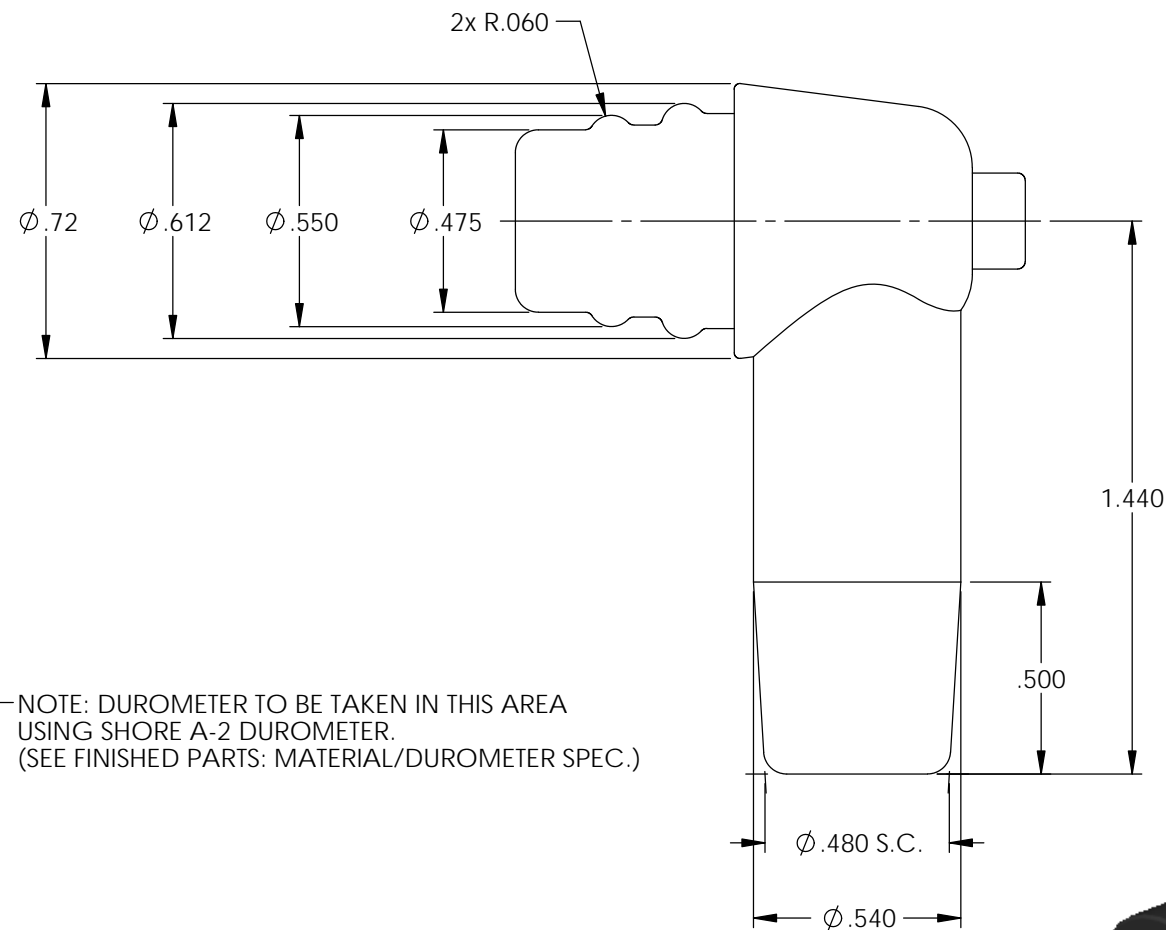
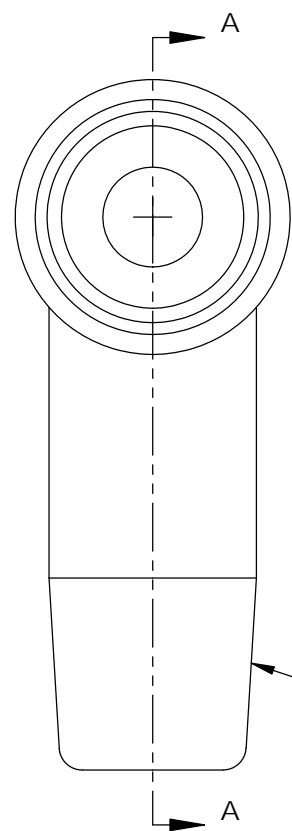
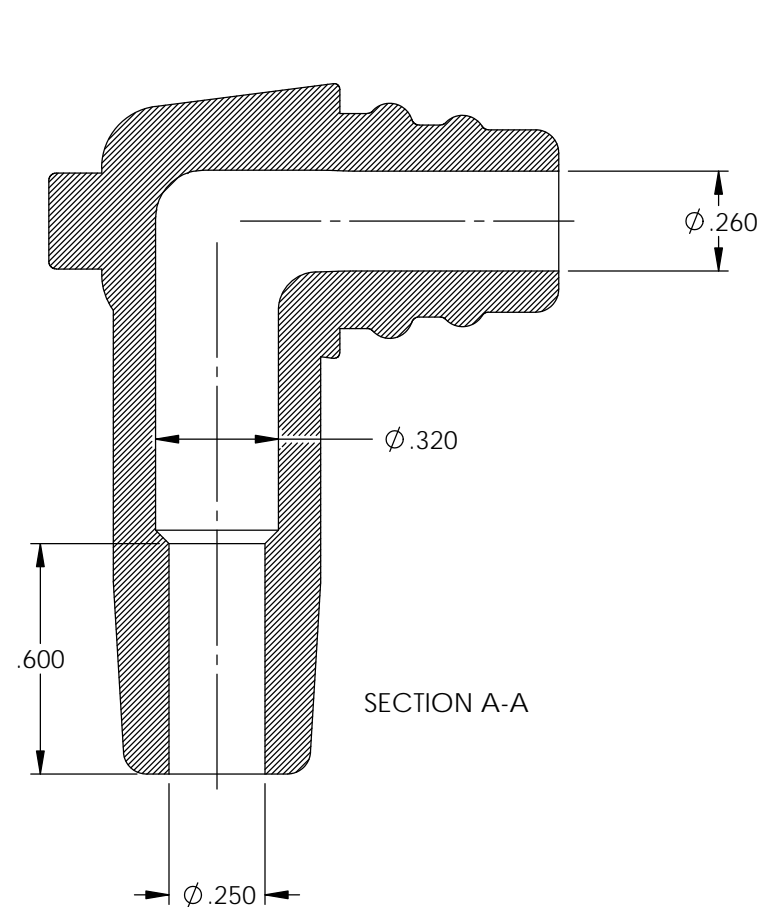


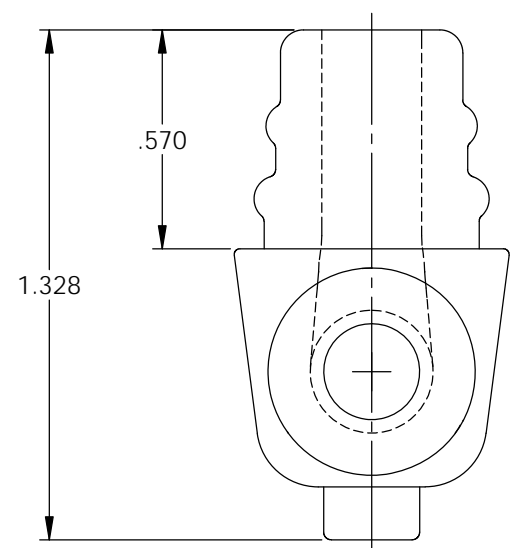
P/C	DESCRIPTION	COLOR	MATERIAL	TEMPERATURE
18084	CB8-BS	BLACK	SILICONE	400°

Rev.	Description of Change/ SCN#	Date
1	Redrawn in SW from ACAD Org.Eng.Dwg.Date: 11/24/92	10/24/19

NOTE: FOR MAXIMUM PERFORMANCE AND RELIABILITY,  
ALWAYS USE ETCO ENGINEERED IGNITION TERMINALS  
WITH ETCO AUTOMOTIVE INSULATORS.



NOTE: DUROMETER TO BE TAKEN IN THIS AREA  
USING SHORE A-2 DUROMETER.  
(SEE FINISHED PARTS: MATERIAL/DUROMETER SPEC.)



## UNCONTROLLED COPY

 THIRD ANGLE PROJECTION TOLERANCES UNLESS OTHERWISE SPECIFIED INCHES: .XX - ±.030 .XXX - ±.015 ANGLES: ±2°	TOOL NO. <b>2216</b>	Title: <b>Coil Boot</b>		
		DO NOT SCALE DWG.	Drawn By: <b>S.Johnson</b>	Date: <b>10/24/19</b>
ETCO Incorporated Engineered Products 25 Bellows Street Warwick, RI 02888 Phone: (401) 467-2400 Fax: (401) 467-9230 www.ETCO.com		Design Control By: <b>ETCO</b>	Scale: <b>2X</b>	Size <b>B</b>
		Dwg. No.: <b>CB8 cust</b>		