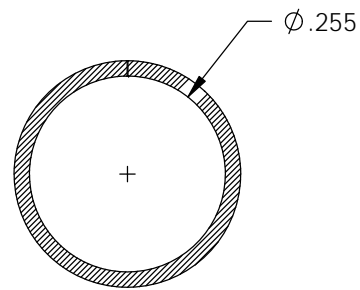
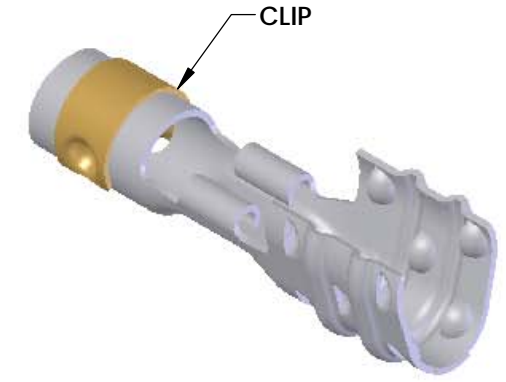
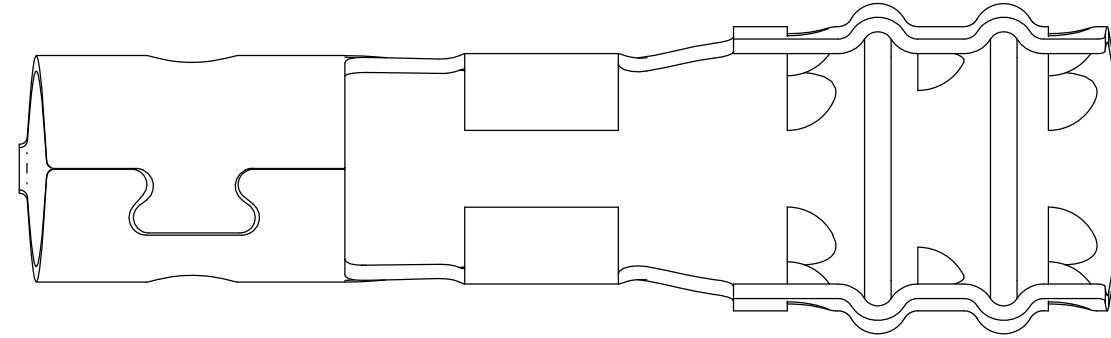


NOTES:

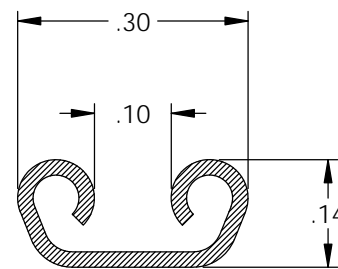
1. MATERIAL: .020 THICK, ELECTRO-GALVANIZED ZINC ^① PLATED STEEL, #3 TEMPER (1/4 HARD) PER ETCO METAL CODE 0-0033.
2. MATERIAL: .020 THICK, S430 STAINLESS STEEL, BRIGHT ANNEALED, PER ETCO METAL CODE 0-0094.
3. PARTS MAY BE COATED WITH A LIGHT FILM OF LUBRICATION USED IN THE MANUFACTURING PROCESS.
4. WIRE RANGE: 7mm CABLE.

Rev.	Description of Change/ SCN#	Date
1	ECR# 4870 and 5618 SCJ Redrawn in SW from ACAD Org.Eng.Dwg.Date: 10/31/94	6/11/19

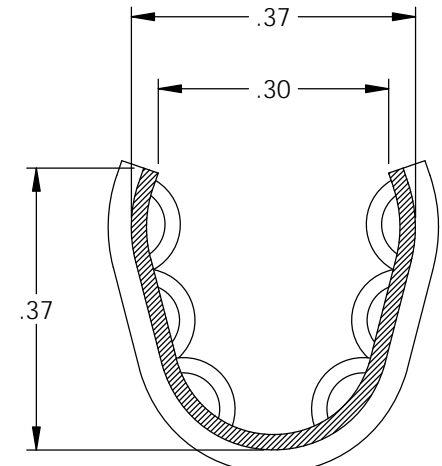
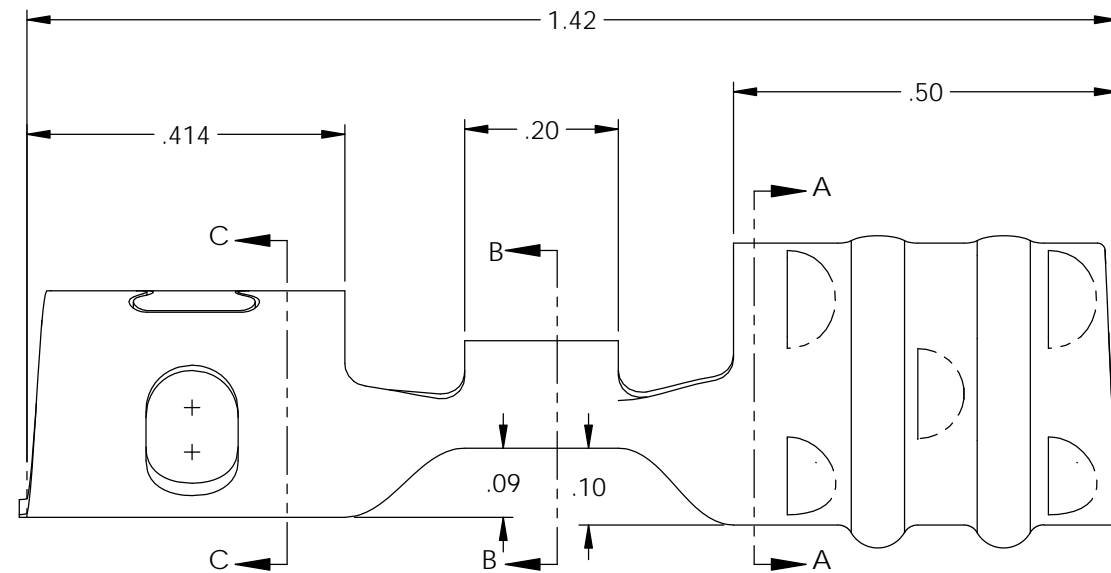
P/C	DESCRIPTION	MAT'L	CLIP
15166	CC17-BZS	NOTE 1	SCA4-G
15144	CC17-SS	NOTE 2	SCA4-G



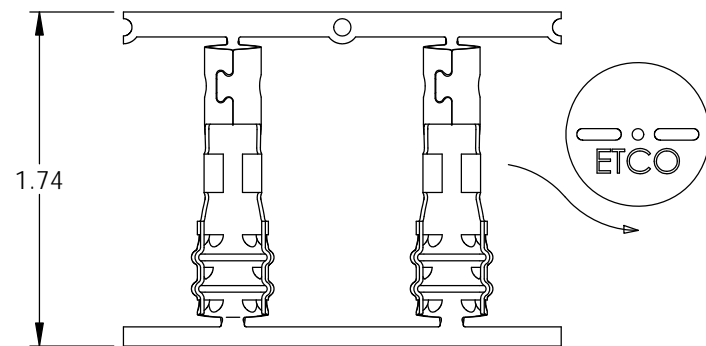
SECTION C-C



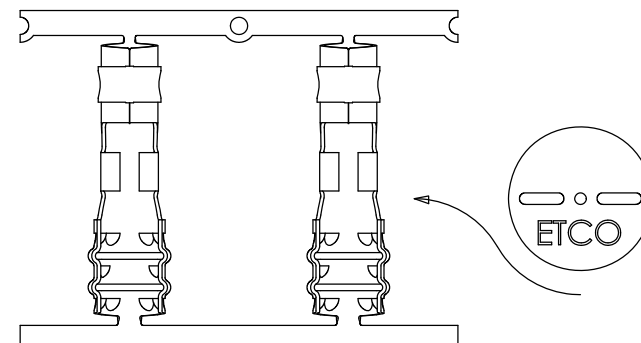
SECTION B-B



SECTION A-A



DIRECTION EXITING TOOL, EARS UP, TO THE FRONT



DIRECTION TOWARD APPLICATOR, EARS UP, TO THE FRONT, FROM RIGHT

THIS PRINT IS THE PROPERTY OF ETCO INCORPORATED. NO PART OF THIS DESIGN MAY BE USED IN ANY WAY WITHOUT WRITTEN CONSENT FROM ETCO INCORPORATED.

UNCONTROLLED COPY

<p>THIRD ANGLE PROJECTION TOLERANCES UNLESS OTHERWISE SPECIFIED INCHES: .XX - ±.030 .XXX - ±.015 ANGLES: ±5°</p>	<p>TOOL NO. 2137</p>	<p>Title: Spark Plug Core Crimp Terminal</p>		
		<p>DO NOT SCALE DWG.</p>	<p>Drawn By: S.Johnson</p>	<p>Date: 6/11/19</p>
<p>ETCO Incorporated Engineered Products 25 Bellows Street Warwick, RI 02888 Phone: (401) 467-2400 Fax: (401) 467-9230 www.ETCO.com</p>		<p>Design Control By: ETCO</p>	<p>Scale: 4X</p>	<p>Size B</p>
<p>Dwg. No.: CC17 cust</p>				