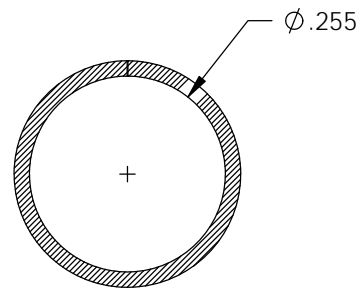
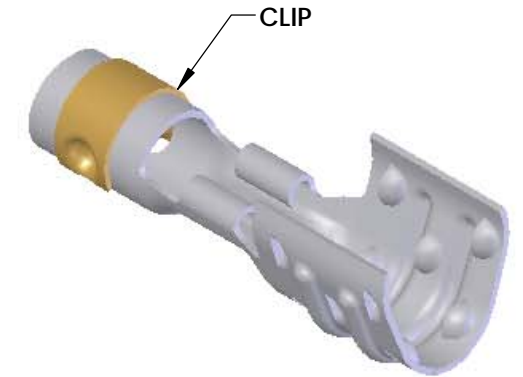
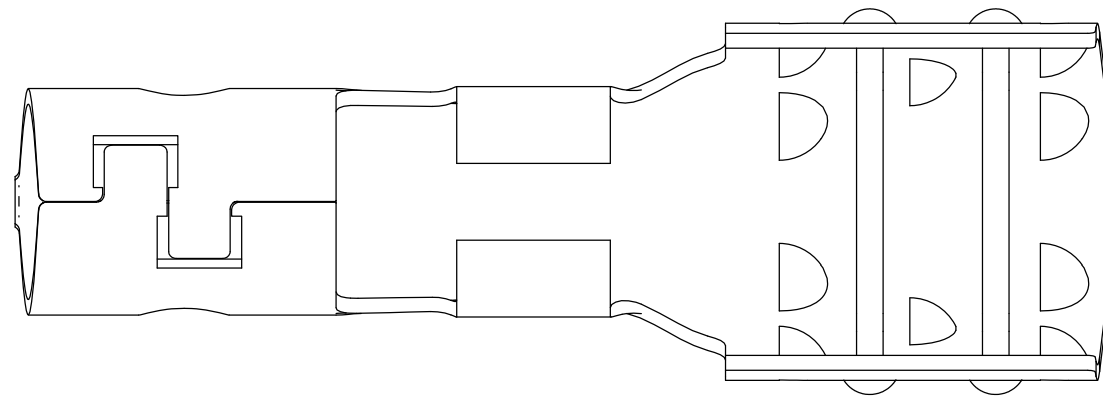


NOTES:

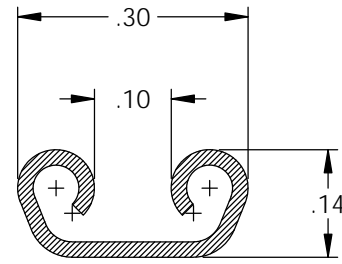
1. MATERIAL: .020 THICK, ELECTRO-GALVANIZED ZINC ^① PLATED STEEL, #3 TEMPER (1/4 HARD) PER ETCO METAL CODE 0-0033.
2. MATERIAL: .020 THICK, S430 STAINLESS STEEL, BRIGHT ANNEALED, PER ETCO METAL CODE 0-0094.
3. PARTS MAY BE COATED WITH A LIGHT FILM OF LUBRICATION USED IN THE MANUFACTURING PROCESS.
4. WIRE RANGE: 8mm CABLE.

P/C	DESCRIPTION	MAT'L	CLIP
15167	CC18-BZS	NOTE 1	SCA4-G
15146	CC18-SS	NOTE 2	SCA4-G

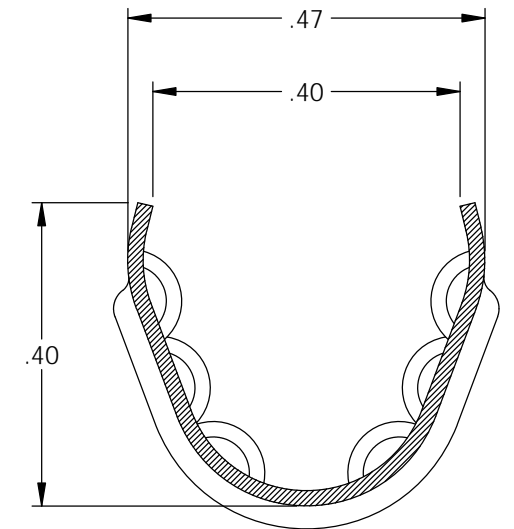
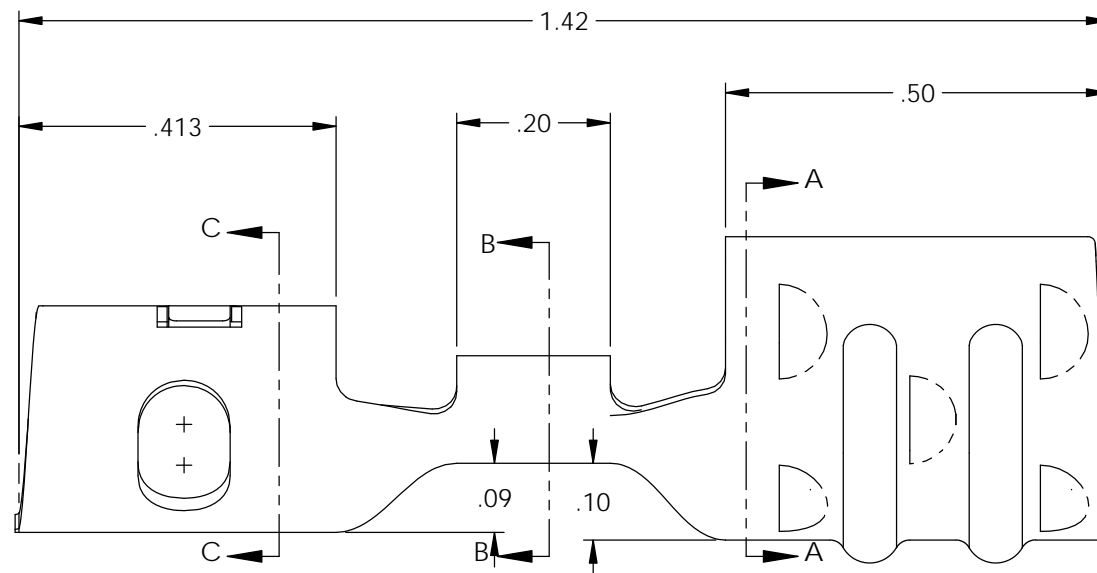
Rev.	Description of Change/ SCN#	Date
1	ECR# 4870 SCJ Redrawn in SW from ACAD Org.Eng.Dwg.Date: 10/31/94	6/11/19



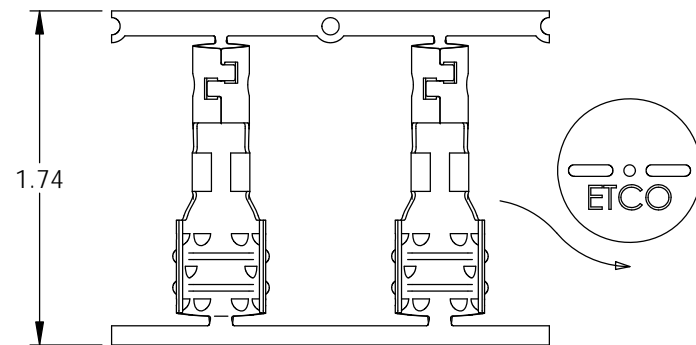
SECTION C-C



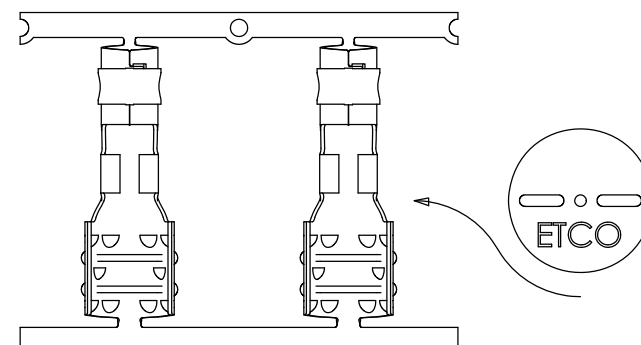
SECTION B-B



SECTION A-A



DIRECTION EXITING TOOL,
EARS UP, TO THE FRONT



DIRECTION TOWARD APPLICATOR,
EARS UP, TO THE FRONT, FROM RIGHT

UNCONTROLLED COPY

<p>THIRD ANGLE PROJECTION TOLERANCES UNLESS OTHERWISE SPECIFIED INCHES: .XX - ±.030 .XXX - ±.015 ANGLES: ±5°</p>	<p>TOOL NO. 2133</p>	<p>Title: Spark Plug Core Crimp Terminal</p>	
		<p>DO NOT SCALE DWG.</p>	<p>Drawn By: S.Johnson Date: 6/11/19</p>
<p>ETCO Incorporated Engineered Products 25 Bellows Street Warwick, RI 02888 Phone: (401) 467-2400 Fax: (401) 467-9230 www.ETCO.com</p>		<p>Design Control By: ETCO</p>	<p>Scale: 4X Size B</p>
		<p>Dwg. No.: CC18 cust</p>	