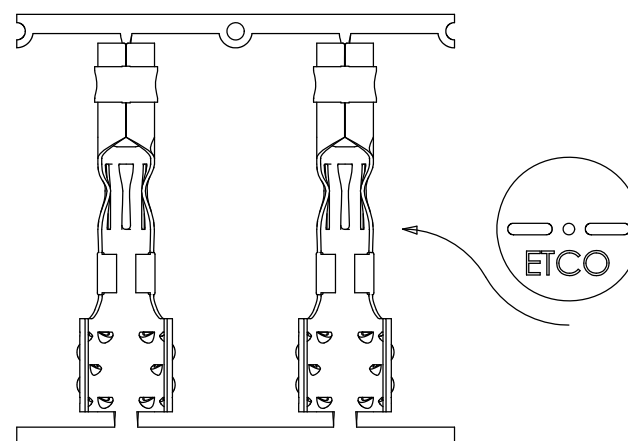
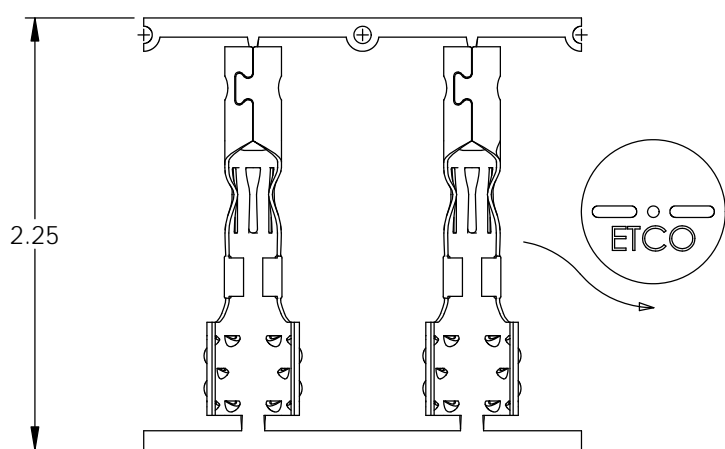
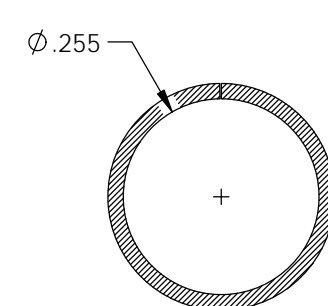
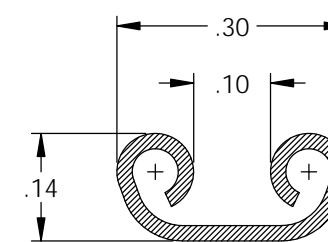
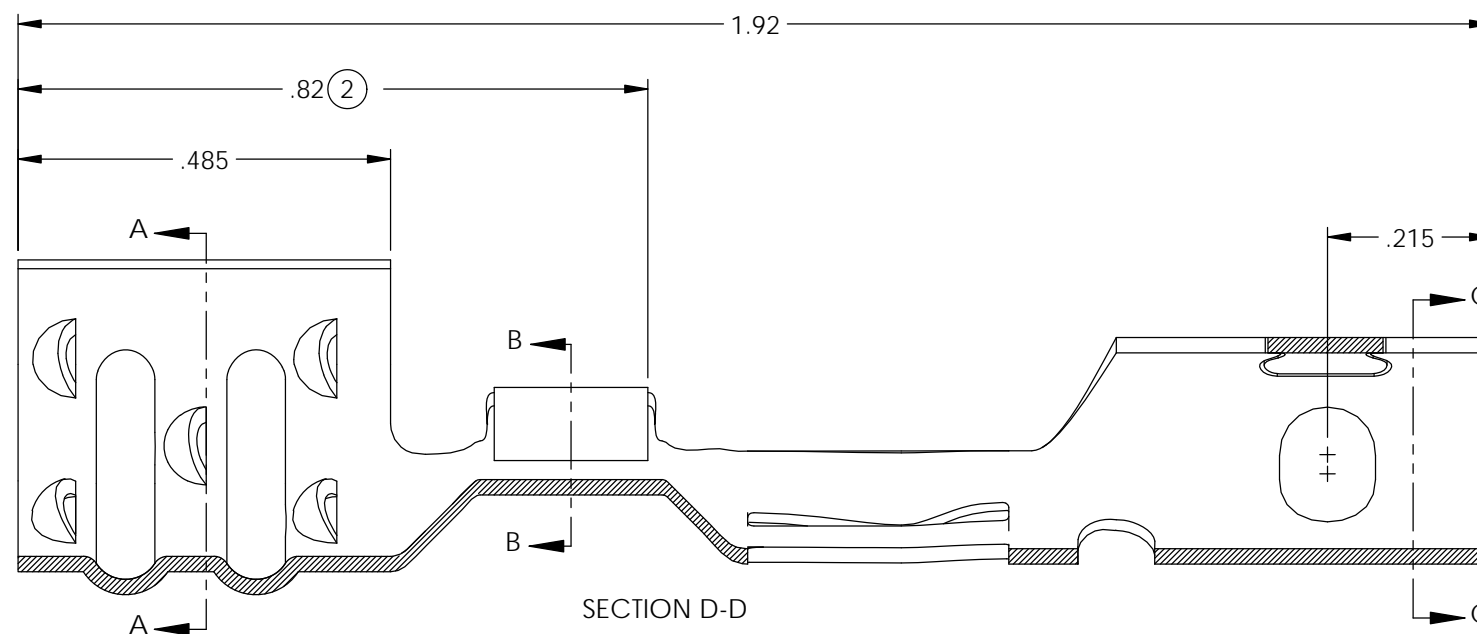
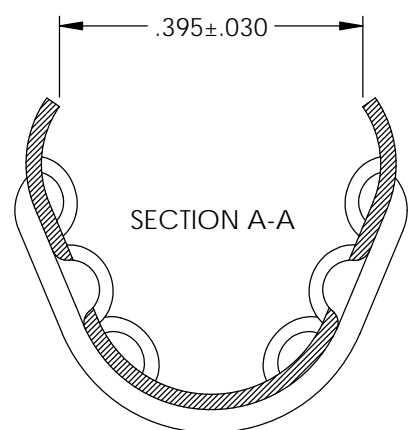
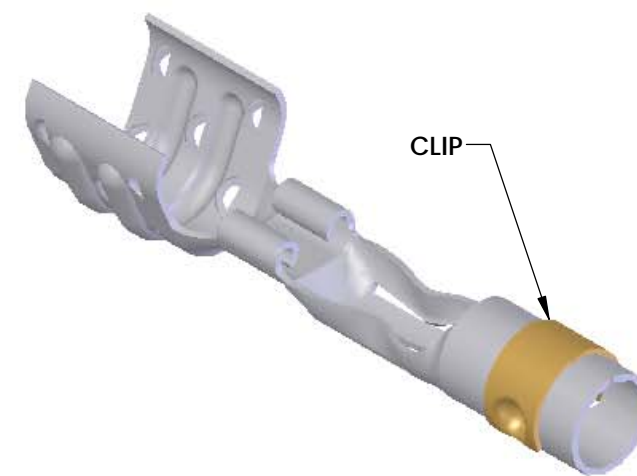
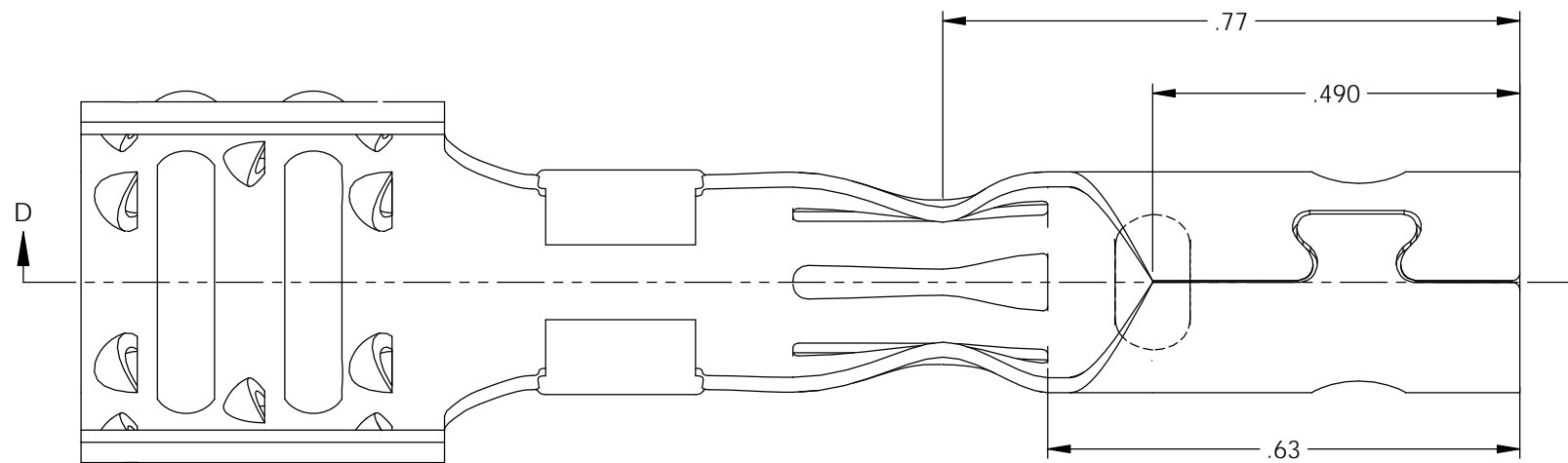


NOTES:

1. MATERIAL: .020 THICK S430 STAINLESS STEEL
BRIGHT ANNEALED
PER ETCO METAL CODE 0-0071.
2. PARTS MAY BE COATED WITH A LIGHT FILM OF
LUBRICATION USED IN THE MANUFACTURING
PROCESS.
3. WIRE RANGE: 8mm

P/C	DESCRIPTION	MAT'L	CLIP
15169	CC198-SS-EB	NOTE 1	SCA4-G

Rev.	Description of Change/ SCN#	Date
2	ECR# 5297 SCJ Redrawn in SW from ACAD	10/05/18



DIRECTION TOWARD APPLICATION,
EARS UP TO THE FRONT, FROM RIGHT

UNCONTROLLED COPY

TOOL NO.
2134

Title:
8mm Spark Plug Terminal

THIRD ANGLE PROJECTION
TOLERANCES UNLESS OTHERWISE SPECIFIED
INCHES: .XX - ±.030
.XXX - ±.015
ANGLES: ±5°



ETCO Incorporated
Engineered Products
25 Bellows Street
Warwick, RI 02888
Phone: (401) 467-2400
Fax: (401) 467-9230
www.ETCO.com

DO NOT SCALE DWG.
Drawn By: S.Johnson

Date: 9/25/18

Design Control By:
ETCO

Scale:
4X
Size
B

Dwg. No.:
CC198-EB cust