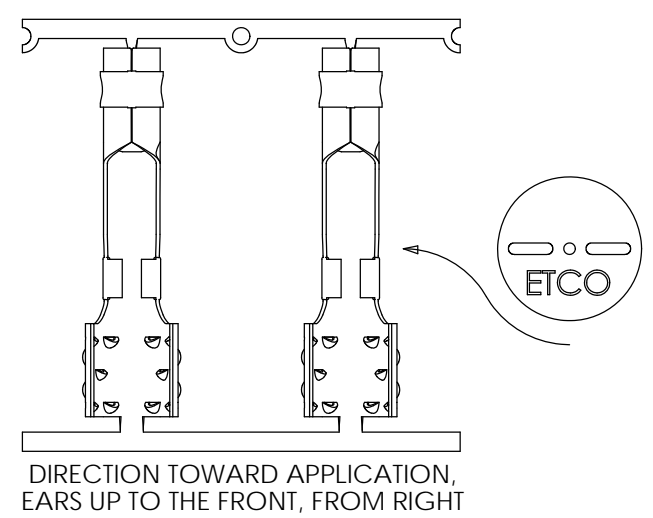
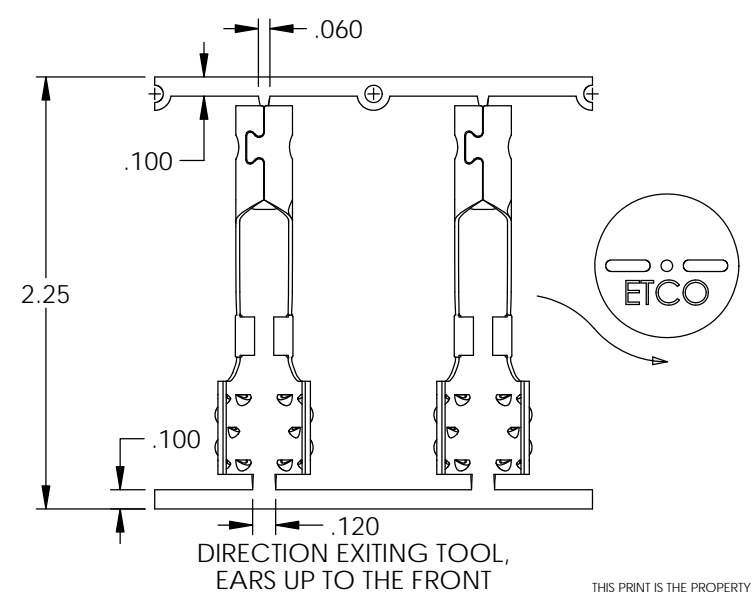
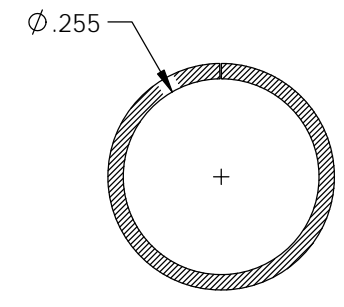
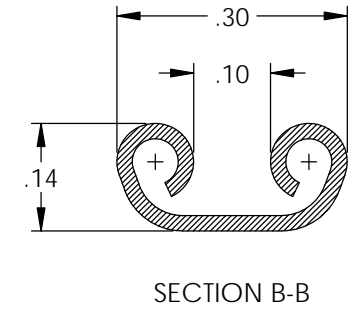
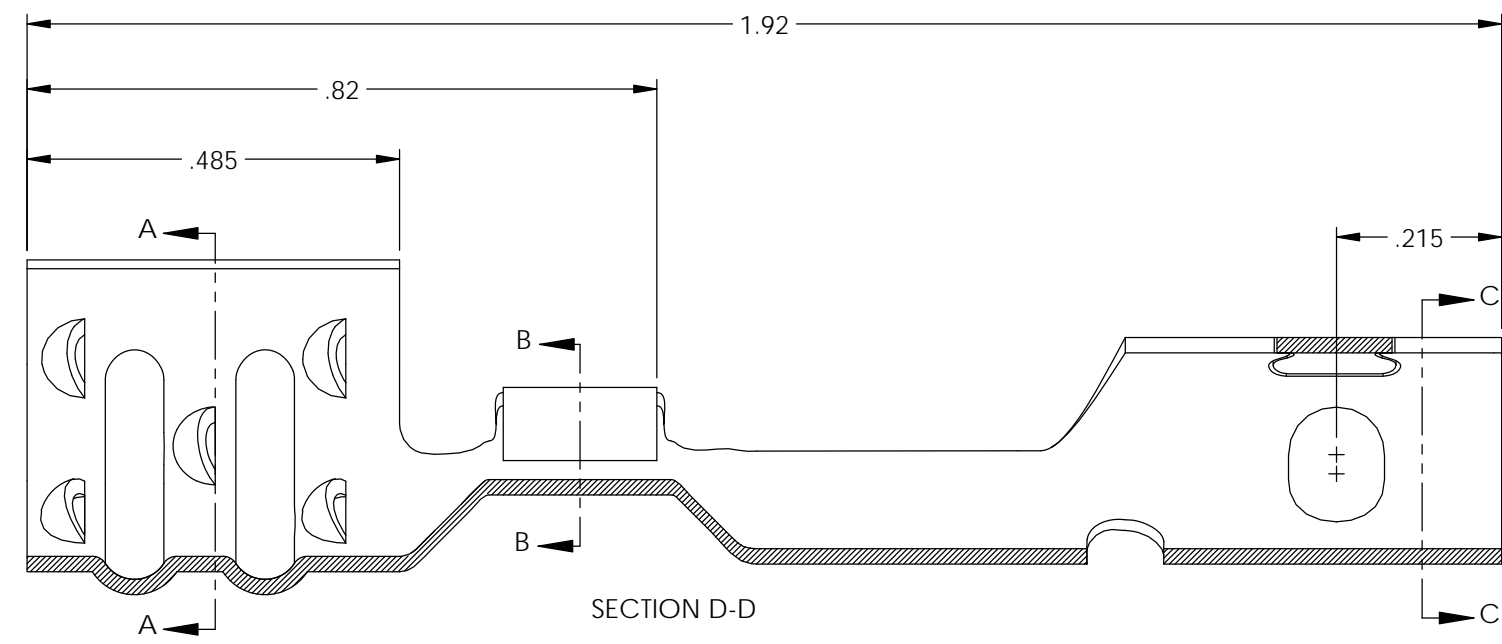
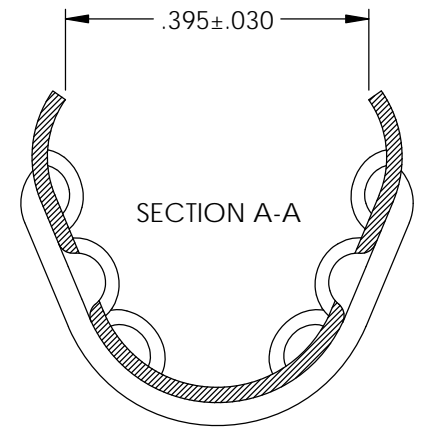
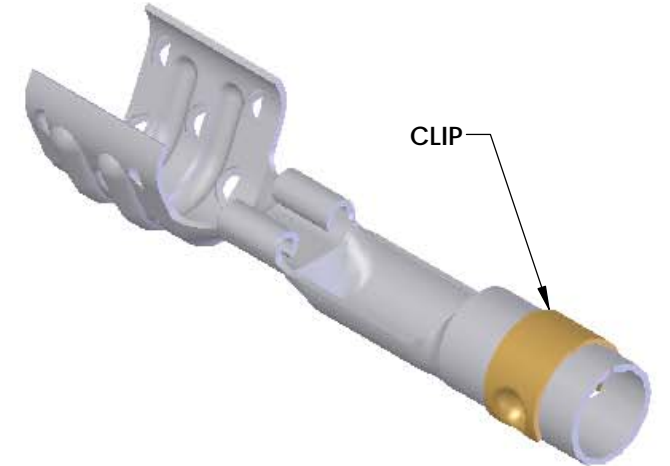
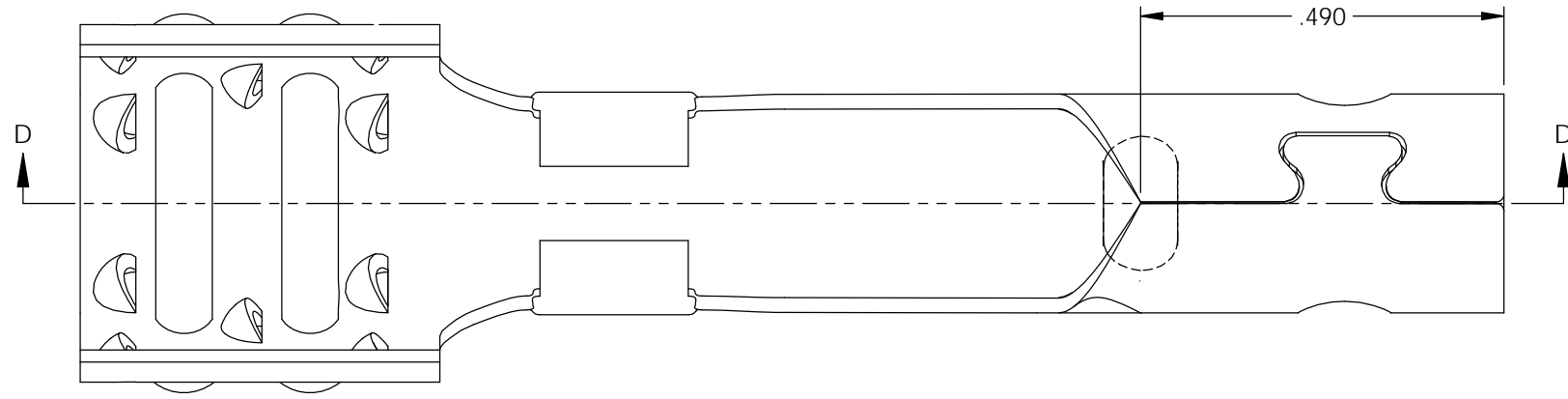


P/C	DESCRIPTION	MAT'L	CLIP
22016	CC198-SS-NB	NOTE 1	SCA4-G

Rev.	Description of Change/ SCN#	Date
3	Redrawn in SW from ACAD	9/25/18

- NOTES:
- MATERIAL: .020 THICK S430 STAINLESS STEEL
BRIGHT ANNEALED
PER ETCO METAL CODE 0-0071.
 - PARTS MAY BE COATED WITH A LIGHT FILM OF LUBRICATION USED IN THE MANUFACTURING PROCESS.
 - WIRE RANGE: 8mm



THIS PRINT IS THE PROPERTY OF ETCO INCORPORATED. NO PART OF THIS DESIGN MAY BE USED IN ANY WAY WITHOUT WRITTEN CONSENT FROM ETCO INCORPORATED.

UNCONTROLLED COPY

<p>THIRD ANGLE PROJECTION TOLERANCES UNLESS OTHERWISE SPECIFIED INCHES: .XX - ±.030 .XXX - ±.015 ANGLES: ±5°</p>	<p>TOOL NO. 2134</p>	<p>Title: 8mm Spark Plug Terminal</p>	
		<p>DO NOT SCALE DWG.</p>	<p>Drawn By: S.Johnson Date: 9/25/18</p>
<p>ETCO Incorporated Engineered Products 25 Bellows Street Warwick, RI 02888 Phone: (401) 467-2400 Fax: (401) 467-9230 www.ETCO.com</p>		<p>Design Control By: ETCO</p>	<p>Scale: 4X Size B</p>
		<p>Dwg. No.: CC198-NB</p>	