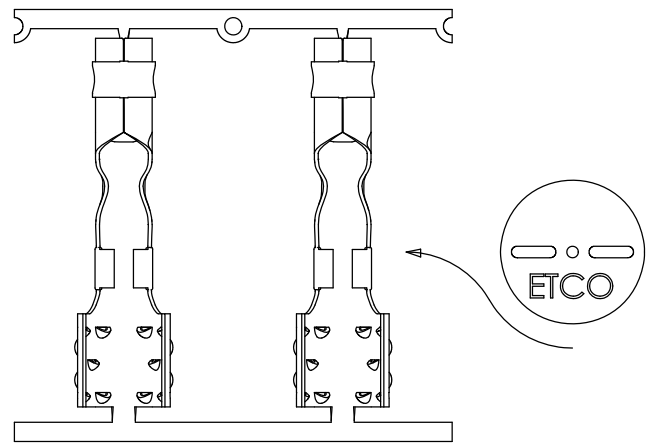
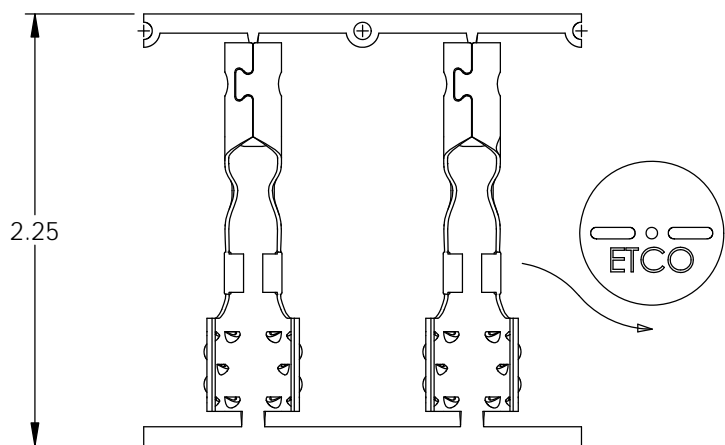
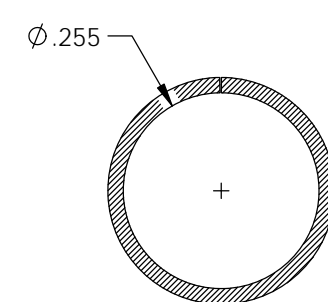
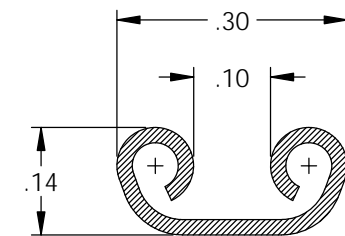
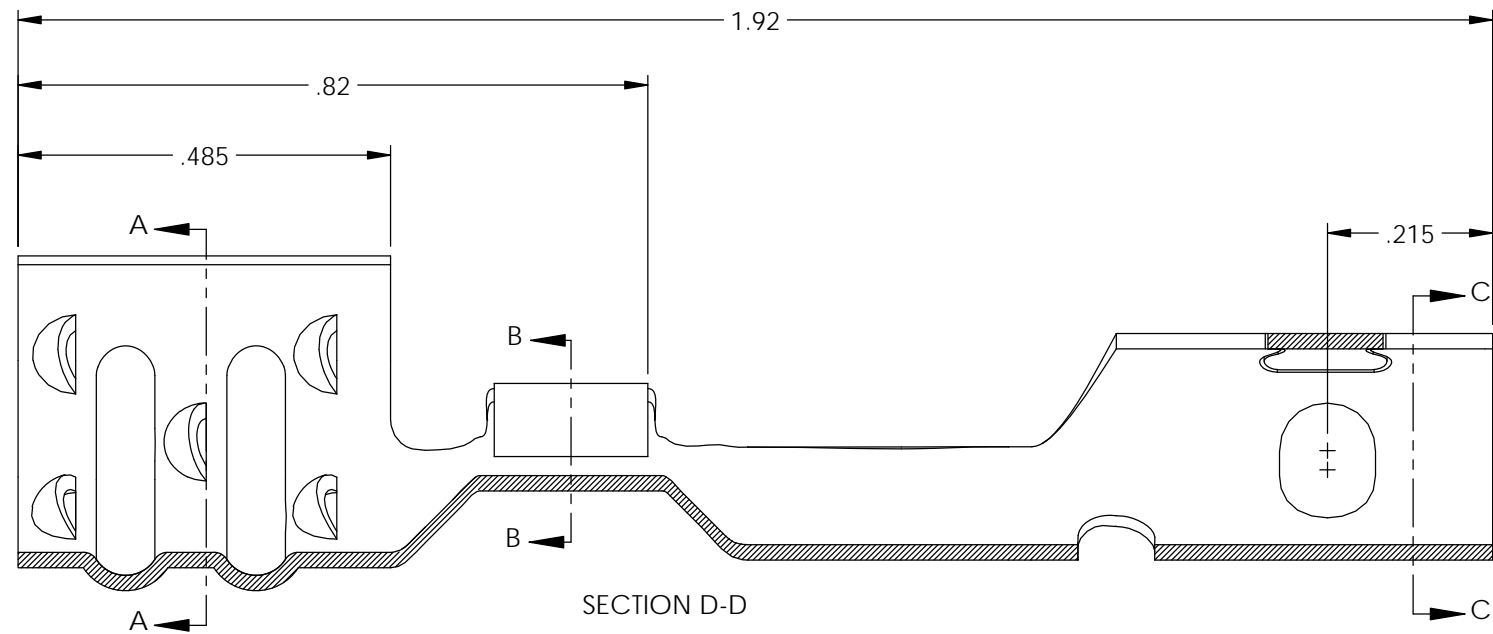
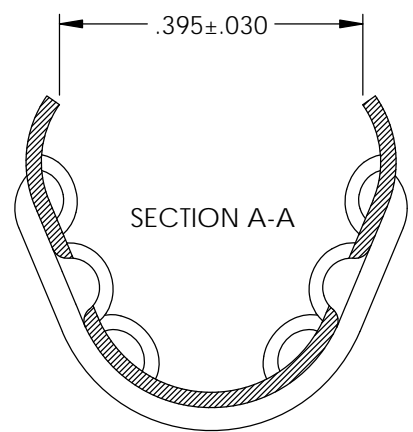
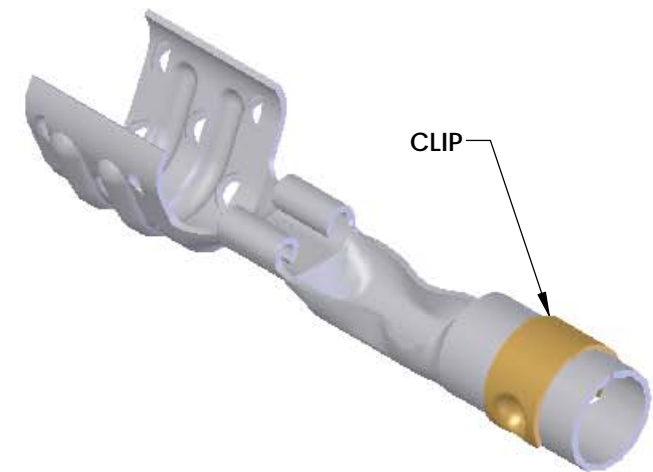
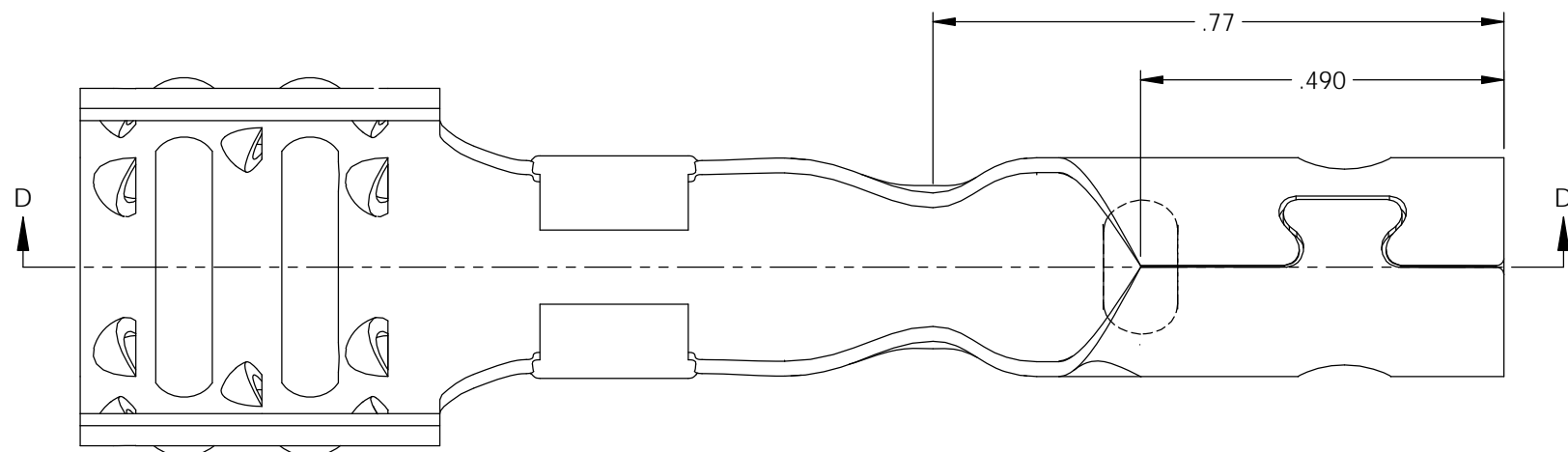


P/C	DESCRIPTION	MAT'L	CLIP
15145	CC198-SS	NOTE 1	SCA4-G

Rev.	Description of Change/ SCN#	Date
2	Redrawn in SW from ACAD	9/25/18

- NOTES:
- MATERIAL: .020 THICK S430 STAINLESS STEEL
BRIGHT ANNEALED
PER ETCO METAL CODE 0-0071.
 - PARTS MAY BE COATED WITH A LIGHT FILM OF LUBRICATION USED IN THE MANUFACTURING PROCESS.
 - WIRE RANGE: 8mm



DIRECTION EXITING TOOL,
EARS UP TO THE FRONT

DIRECTION TOWARD APPLICATION,
EARS UP TO THE FRONT, FROM RIGHT

THIS PRINT IS THE PROPERTY OF ETCO INCORPORATED. NO PART OF THIS DESIGN MAY BE USED IN ANY WAY WITHOUT WRITTEN CONSENT FROM ETCO INCORPORATED.

UNCONTROLLED COPY

<p>THIRD ANGLE PROJECTION TOLERANCES UNLESS OTHERWISE SPECIFIED INCHES: .XX - ±.030 .XXX - ±.015 ANGLES: ±5°</p>	<p>TOOL NO. 2134</p>	<p>Title: 8mm Spark Plug Terminal</p>	
		<p>DO NOT SCALE DWG.</p>	<p>Drawn By: S.Johnson Date: 9/25/18</p>
<p>ETCO Incorporated Engineered Products 25 Bellows Street Warwick, RI 02888 Phone: (401) 467-2400 Fax: (401) 467-9230 www.ETCO.com</p>		<p>Design Control By: ETCO</p>	<p>Scale: 4X Size B</p>
		<p>Dwg. No.: CC198</p>	