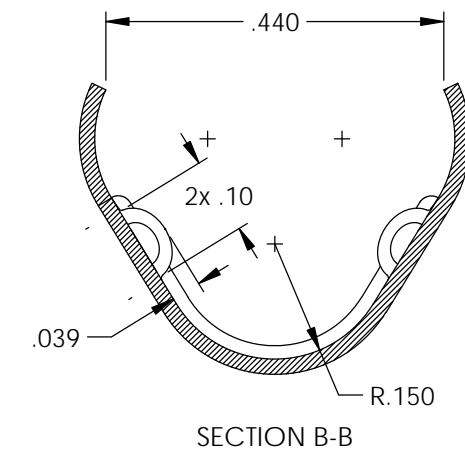
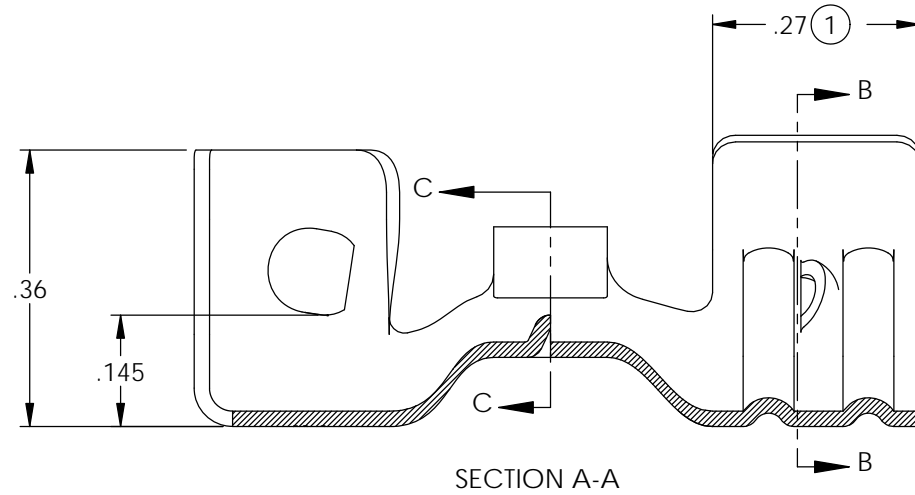
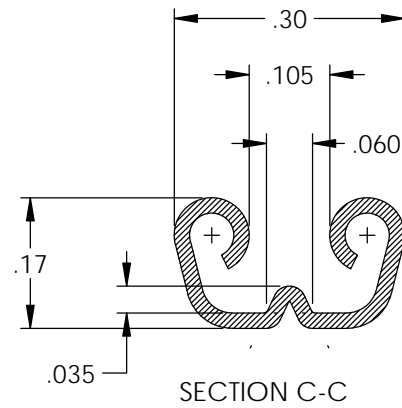
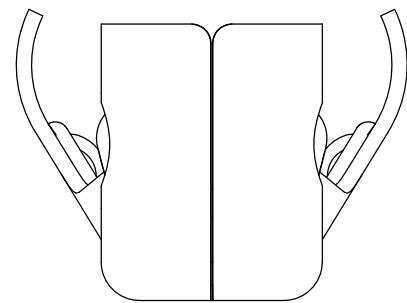
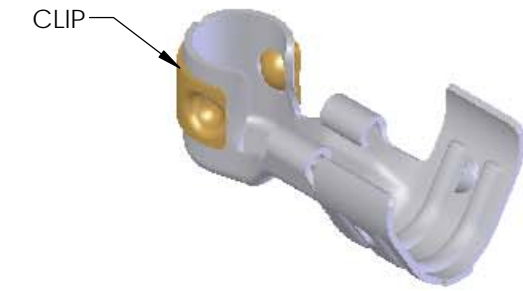
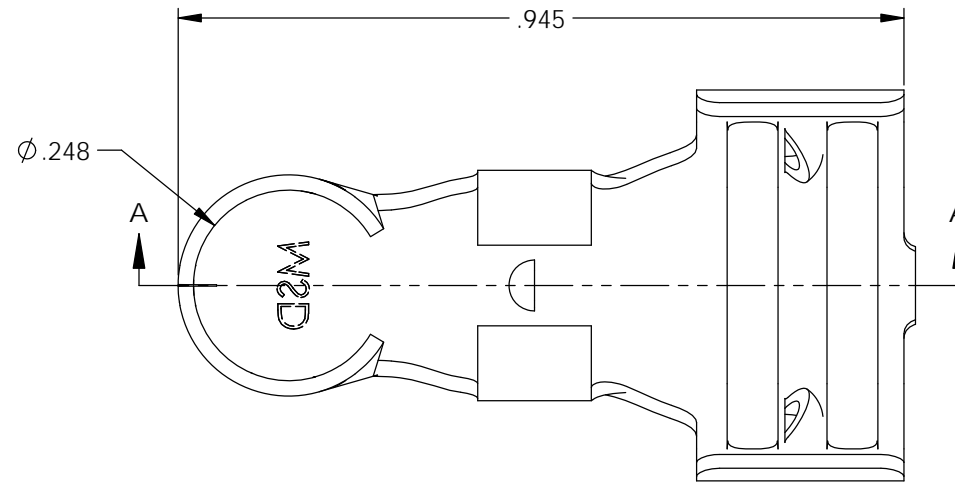


NOTES:

1. MATERIAL: .020 S430 STAINLESS STEEL  
BRIGHT ANNEALED  
PER ETCO METAL CODE 0-0051.
2. PARTS MAY BE COATED WITH A LIGHT FILM OF LUBRICATION USED IN THE MANUFACTURING PROCESS.
3. WIRE RANGE: 8mm.
4. PART ARE PRODUCED IN LOOSE PIECE FORM.

Rev.	Description of Change/ SCN#	Date
1	ECR# 5269 SCJ Redrawn in SW from ACAD Org.Eng.Dwg.Date: 7/14/03	9/06/18

P/C	DESCRIPTION	TERMINAL	MAT'L	CLIP
22002	CC38-SS-X	CC38-SS	NOTE 1	SCA4-G



# UNCONTROLLED COPY

<p>THIRD ANGLE PROJECTION TOLERANCES UNLESS OTHERWISE SPECIFIED INCHES: .XX - ±.030 .XXX - ±.015 ANGLES: ±5°</p>	<p>TOOL NO.</p> <p><b>2236</b></p>	<p>Title: <b>90° Ignition Terminal</b></p>	
		<p>DO NOT SCALE DWG.</p> <p>ETCO Incorporated Engineered Products 25 Bellows Street Warwick, RI 02888 Phone: (401) 467-2400 Fax: (401) 467-9230 www.ETCO.com</p>	<p>Drawn By: <b>S.Johnson</b></p> <p>Chk'd/App'd By:</p> <p>Dwg. No.: <b>CC38-X cust</b></p>