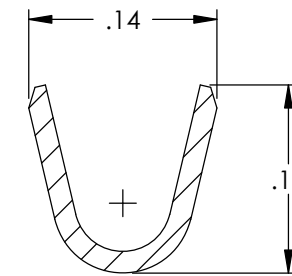
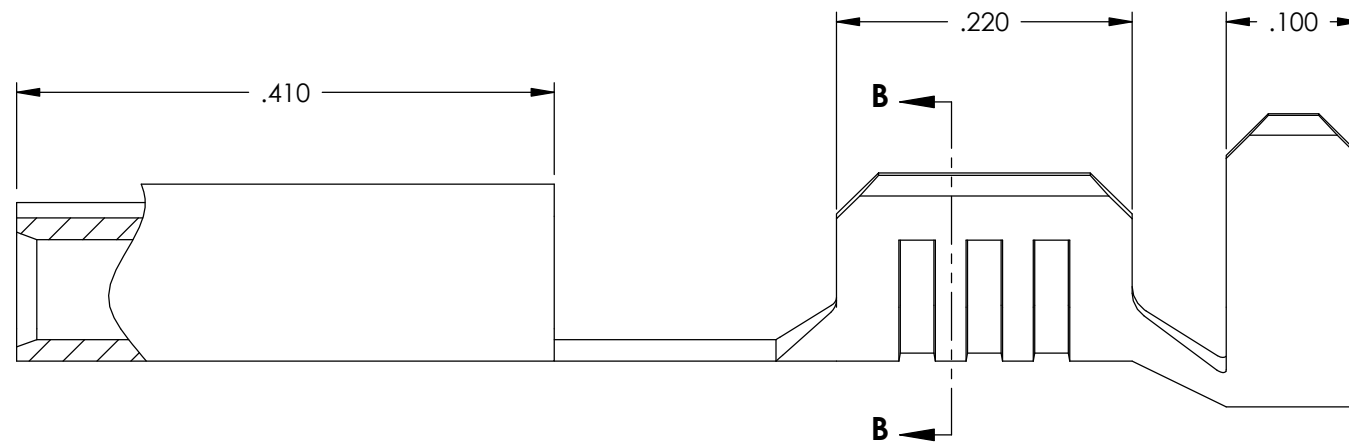
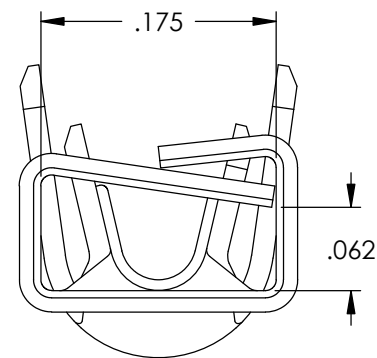
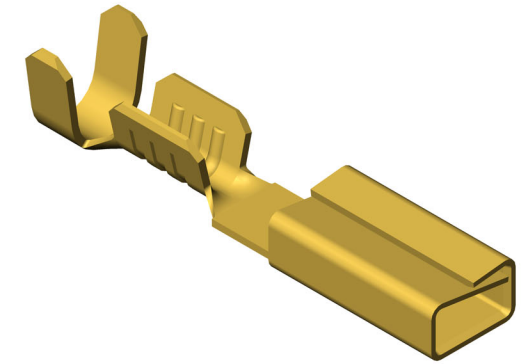
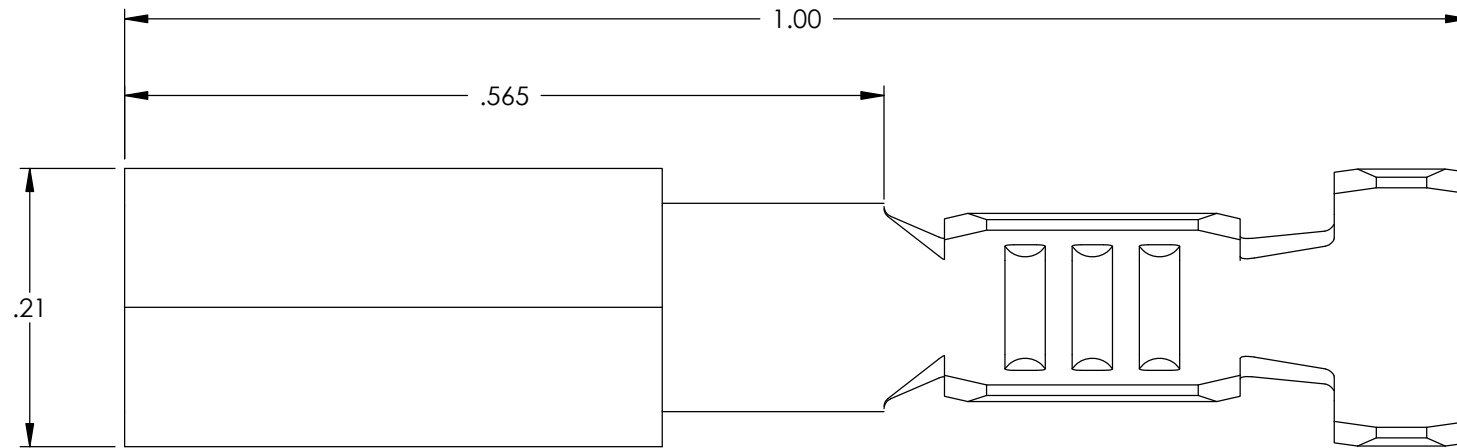


NOTE:

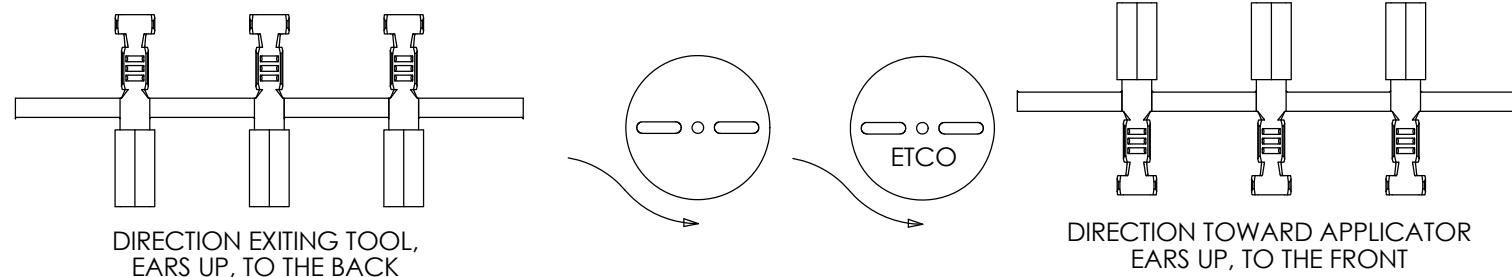
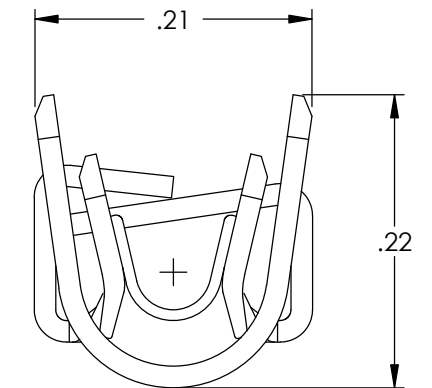
- 1.) MAT'L: .016 THK., BRASS,
#2 TEMPER (HALF HARD), ANNEALED TO TEMPER,
PER ETCO METAL CODE NO. 00187.
- 2.) TO MATE WITH A IEC-C14 PIN.
- 3.) RECEPTACLE RETENTION FORCES ARE INDICATED
ON THE QUALITY INSPECTION PLAN.
- 4.) WIRE RANGE: 16-18 AWG. (3)
- 5.) INSUL RANGE: Ø .113-.138

P/C	DESCRIPTION (2)	MAT'L
09493	CF065-C-HB	NOTE 1

Rev.	Description of Change/ SCN#	Date
1	TRANSFERED FROM CP SCJ	8-5-08
2	ECR# 816 SCJ	11-7-11
3	ECR# 6782 SCJ	3/31/22



SECTION B-B
SCALE 7 : 1



THIS PRINT IS THE PROPERTY OF ETCO INCORPORATED. NO PART OF THIS DESIGN MAY BE USED IN ANY WAY WITHOUT WRITTEN CONSENT FROM ETCO INCORPORATED.

UNCONTROLLED COPY

<p>THIRD ANGLE PROJECTION TOLERANCES UNLESS OTHERWISE SPECIFIED INCHES: .XX - ±.030 .XXX - ±.015 ANGLES: ±5°</p>	<p>TOOL NO. 0809</p>	<p>Title: RECEPTACLE</p>		
		<p>DO NOT SCALE DWG.</p>	<p>Drawn By: S.JOHNSON</p>	<p>Date: 8-5-08</p>
<p>ETCO Incorporated Engineered Products 25 Bellows Street Warwick, RI 02888 Phone: (401) 467-2400 Fax: (401) 467-9230 www.ETCO.com</p>		<p>Chk'd/App'd By:</p>	<p>Scale: 7X</p>	<p>Size B</p>
		<p>Dwg. No.: CF065 cust</p>		