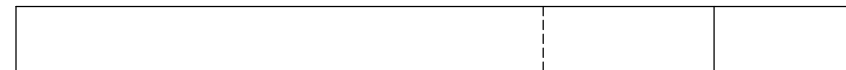
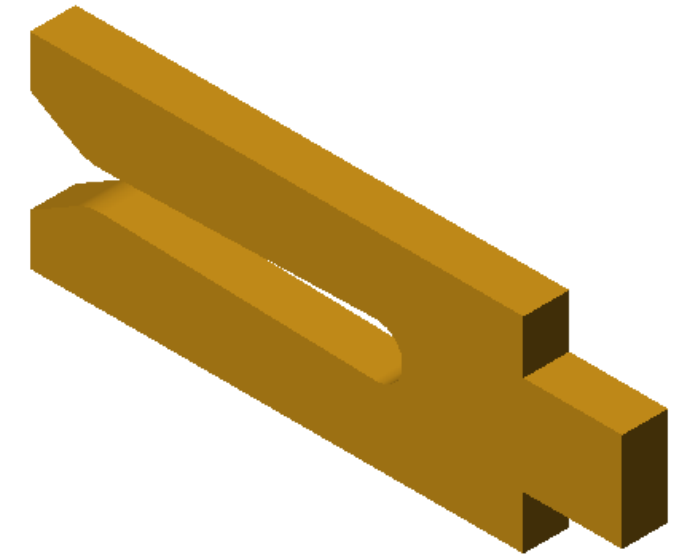
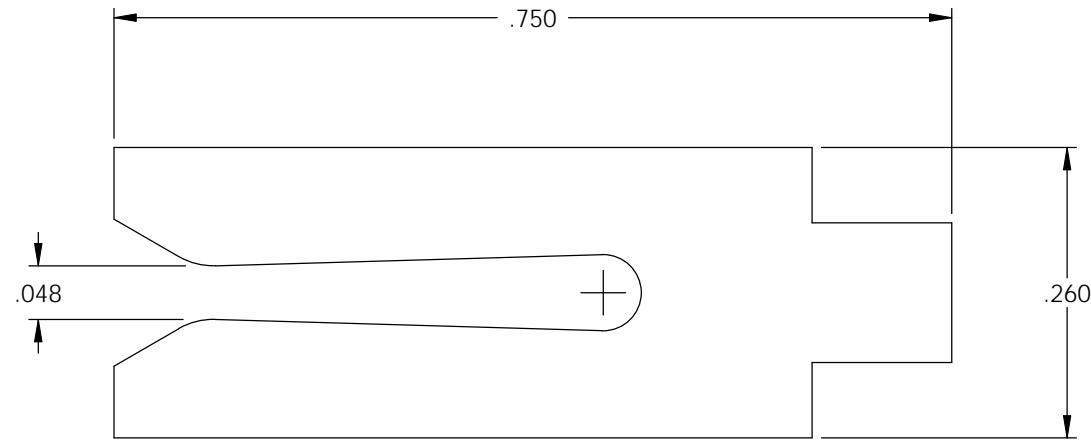


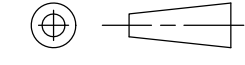

PART CODE	DESCRIPTION	MATERIAL
09495	CF1-HB	NOTE 1

Rev.	Description of Change/ SCN#	Date
1	TRANSFER FROM CP TO EP	9-14-04



- NOTES:
1. MATERIAL: .058 THICK C26000 BRASS, 1/2 HARD, ANNEALED TO TEMPER, PER ETCO METAL CODE 01004.
 2. PARTS MAY BE COATED WITH A LIGHT FILM OF LUBRICATION USED IN THE MANUFACTURING PROCESS.

UNCONTROLLED COPY

 THIRD ANGLE PROJECTION	TOOL NO. 0813	Title: FEMALE CONTACT			
		DO NOT SCALE DWG.	Drawn By: S.JOHNSON	Date: 9-14-04	
TOLERANCES UNLESS OTHERWISE SPECIFIED INCHES: .XX - ±.030 .XXX - ±.015 ANGLES - ±5°		ETCO Incorporated Engineered Products 25 Bellows Street Warwick, R.I. 02888 Phone: (401)467-2400 FAX: (401)467-9230 www.ETCO.com	Chk'd/App'd By:	Scale: 6X	Size B
			Dwg. No.: CF1		