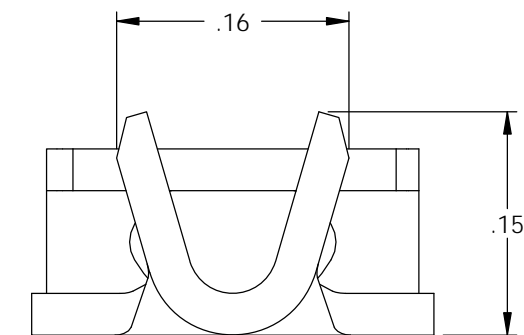
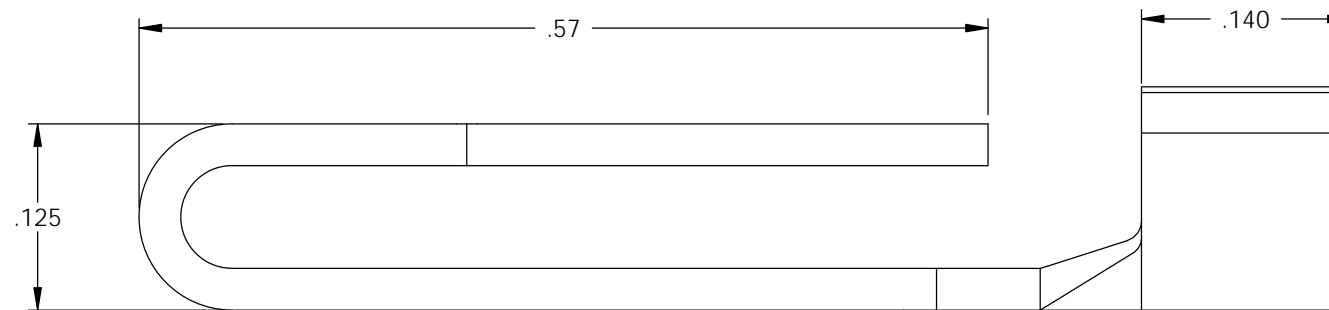
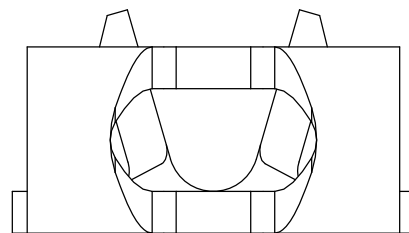
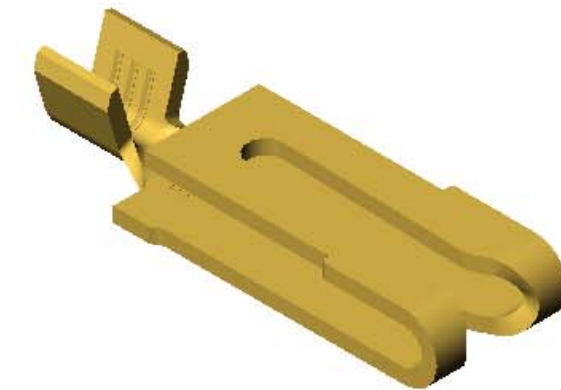
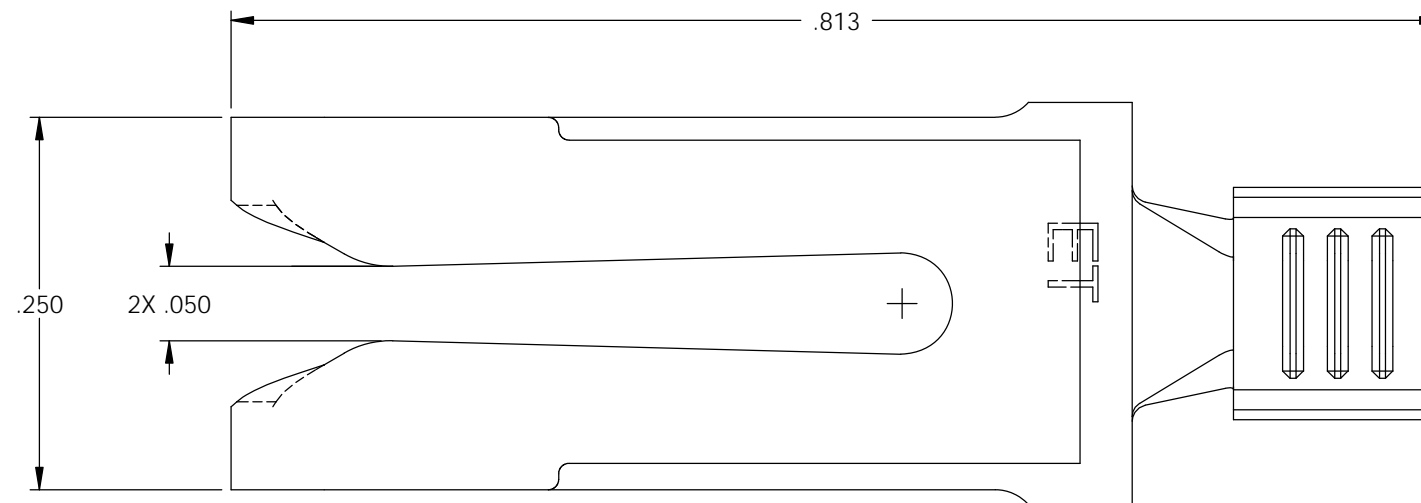


NOTE:

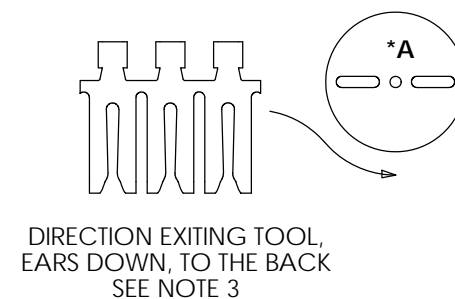
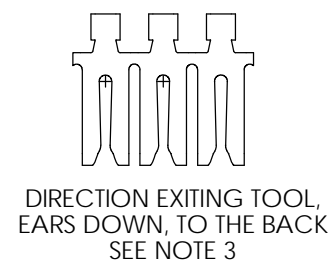
- 1.) MAT'L: .028 THK, BRASS,
#2 TEMPER (HALF HARD), ANNEALED TO TEMPER,
PER ETCO METAL CODE NO. 00711.
- 2.) PARTS MAY BE COATED WITH A LIGHT
FILM OF LUBRICATION USED IN THE
MANUFACTURING PROCESS.
- 3.) WIRE RANGE: 14-18 AWG.

P/C	DESCRIPTION (2)	MAT'L	REWIND
09498	CF156F-DRC-HB	NOTE 1	YES
10166	CF156F-ARB-HB	NOTE 1	YES
14137	CF156F-D-HB	NOTE 1	NO

Rev.	Description of Change/ SCN#	Date
1	TRANSFER FROM CP TO EP SCJ	11-4-05
2	ECR# 816 SCJ	11-7-11



UNCONTROLLED COPY



THIRD ANGLE PROJECTION
TOLERANCES UNLESS
OTHERWISE SPECIFIED
INCHES: .XX - ±.030
.XXX - ±.015
ANGLES - ±5°

TOOL NO.
0810



Title: **FEMALE CONTACT**

DO NOT SCALE DWG.

ETCO Incorporated
Engineered Products
25 Bellows Street
Warwick, R.I. 02888
Phone: (401)467-2400
FAX: (401)467-9230
www.ETCO.com

Drawn By: **S. JOHNSON**

Chk'd/App'd By:

Scale:
8:1

Date: 5-20-03

Size
B

Dwg. No.:

CF156F