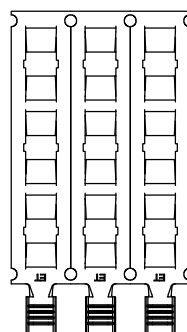
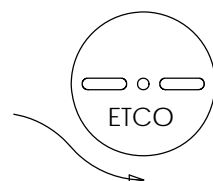
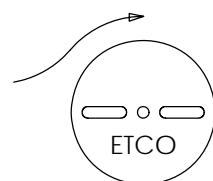
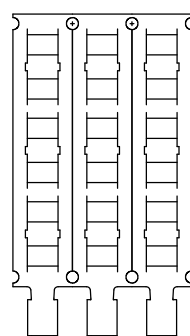
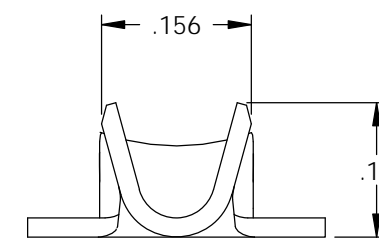
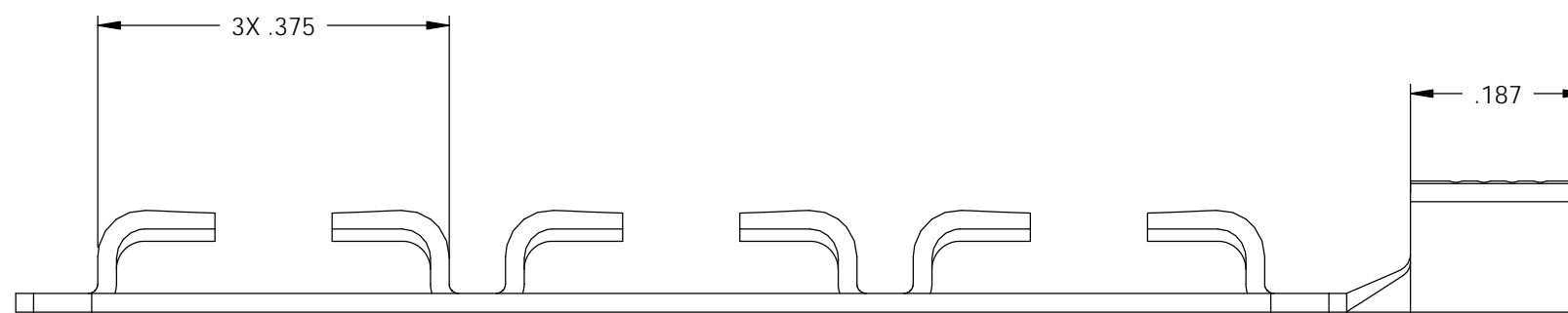
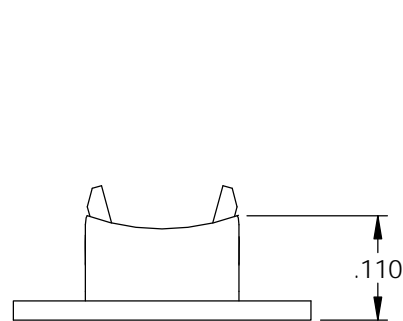
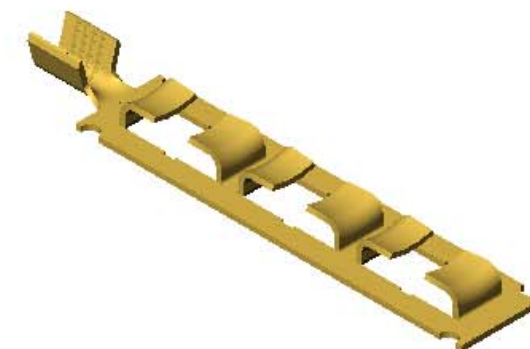
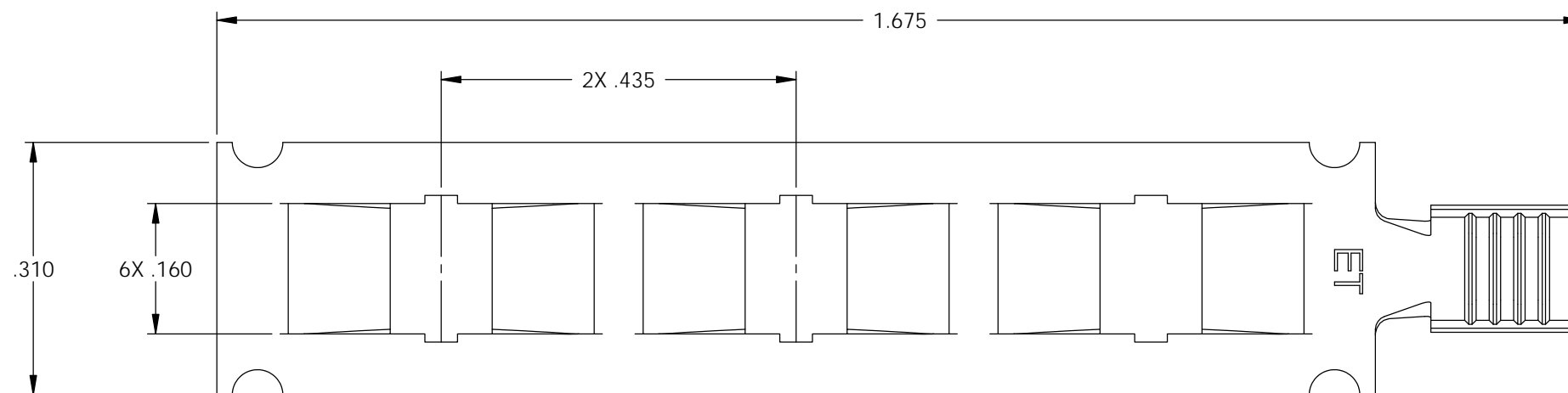


- NOTE:
 1.) MAT'L: .020 THK., BRASS,
 #2 TEMPER (HALF HARD), ANNEALED TO TEMPER,
 PER ETCO METAL CODE NO. 00543.
 2.) PARTS MAY BE COATED WITH A LIGHT
 FILM OF LUBRICATION USED IN THE
 MANUFACTURING PROCESS.
 3.) WIRE RANGE: 14-18 AWG.

P/C	DESCRIPTION (3)	MAT'L
09499	CF210F-C-HB	NOTE 1

Rev.	Description of Change/ SCN#	Date
1	TRANSFERED FROM CP SCJ	8-25-08
2	SCN-140455 JMR	2/06/09
3	ECR# 816 SCJ	10-26-11
4	ECR# 3616 SCJ	3/16/15
5	ECR# 3678 SCJ	4/27/15



DIRECTION TOWARD APPLICATOR,
EARS UP, TO THE FRONT

DIRECTION EXITING TOOL,
EARS DOWN, TO THE FRONT

THIS PRINT IS THE PROPERTY OF ETCO INCORPORATED. NO PART OF THIS DESIGN MAY BE USED IN ANY WAY WITHOUT WRITTEN CONSENT FROM ETCO INCORPORATED.

UNCONTROLLED COPY

<p>THIRD ANGLE PROJECTION TOLERANCES UNLESS OTHERWISE SPECIFIED INCHES: .XX - ±.030 .XXX - ±.015 ANGLES: ±5°</p>	TOOL NO. (4) 0962	Title: FEMALE CONTACT	
		DO NOT SCALE DWG. ETCO Incorporated Engineered Products 25 Bellows Street Warwick, RI 02888 Phone: (401) 467-2400 Fax: (401) 467-9230 www.ETCO.com	Drawn By: S. JOHNSON Date: 8-25-08
		Chk'd/App'd By:	Scale: 5X Size B
		Dwg. No.: CF210F cust	