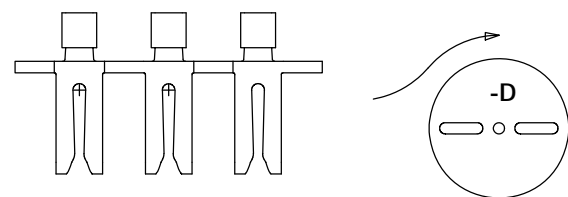
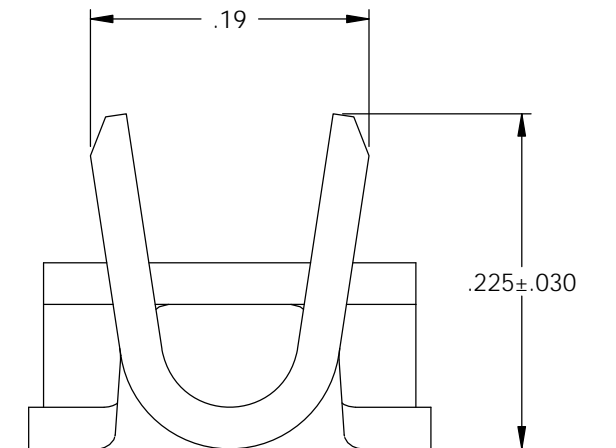
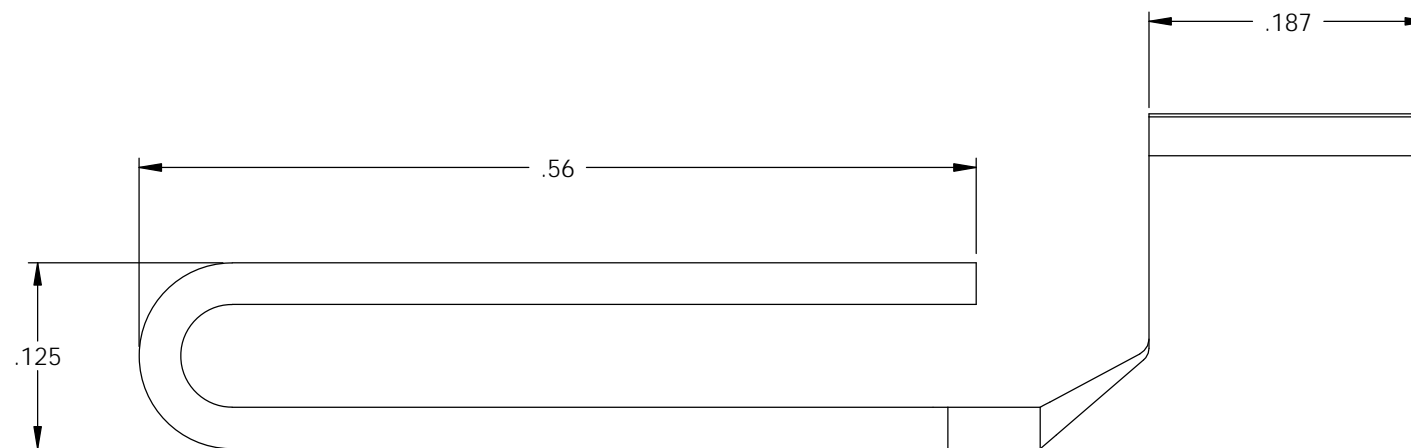
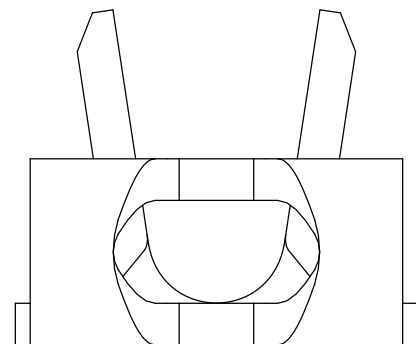
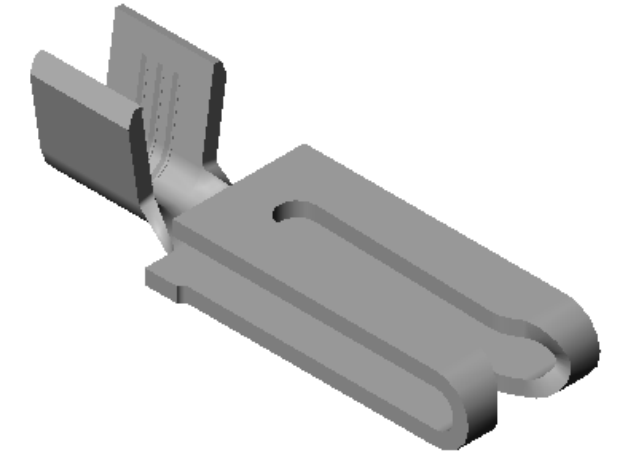
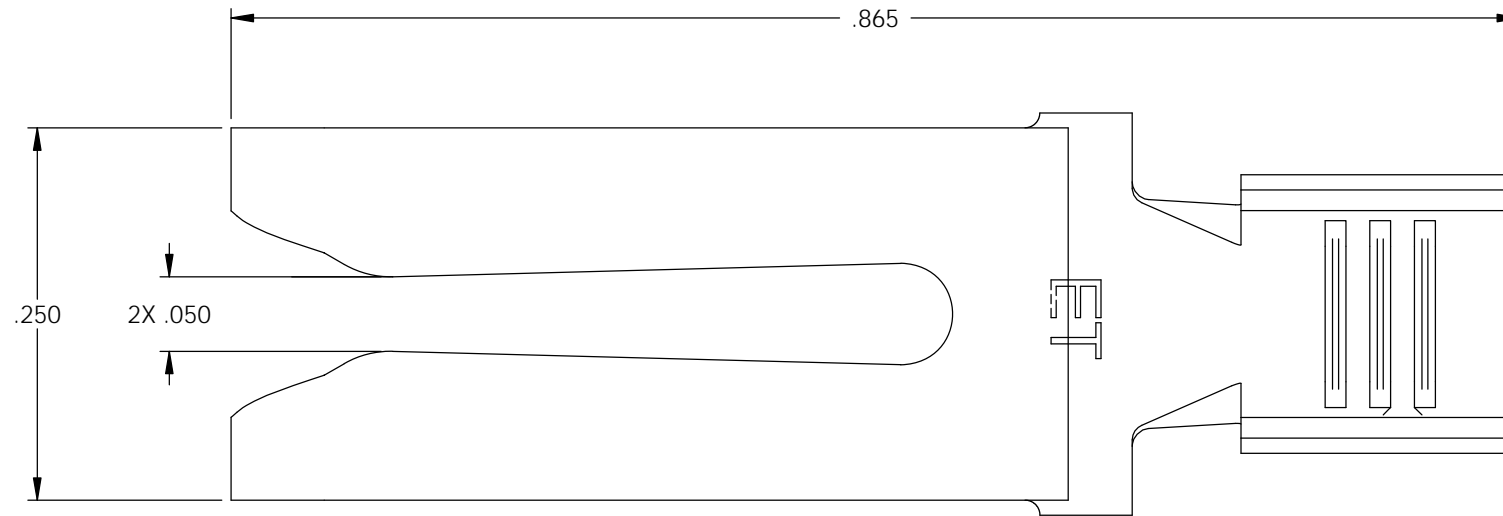


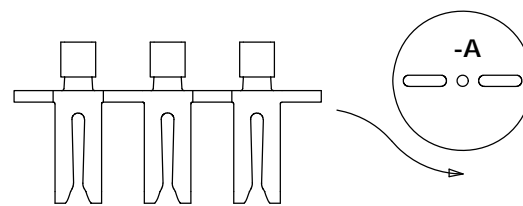
- NOTE:
 1.) MAT'L: .028 THK, BRASS,
 #2 TEMPER (HALF HARD), ANNEALED TO TEMPER,
 PER ETCO METAL CODE NO. 00085.
 2.) PARTS MAY BE COATED WITH A LIGHT
 FILM OF LUBRICATION USED IN THE
 MANUFACTURING PROCESS.
 3.) WIRE RANGE: 10-14 AWG.

P/C	DESCRIPTION (2)	MAT'L	REWIND
09531	CF276F-DRC-HB	NOTE 1	YES
14020	CF276F-ARB-HB	NOTE 1	YES
14145	CF276F-D-HB	NOTE 1	NO

Rev.	Description of Change/ SCN#	Date
1	TRANSFER FROM CP TO EP SCJ	11-4-05
2	ECR# 816 SCJ	11-7-11



DIRECTION EXITING TOOL,
 EARS DOWN, TO THE BACK
 SEE NOTE 3



DIRECTION EXITING TOOL,
 EARS DOWN, TO THE BACK
 SEE NOTE 3

THIS PRINT IS THE PROPERTY OF ETCO INCORPORATED. NO PART OF THIS DESIGN MAY BE USED IN ANY WAY WITHOUT WRITTEN CONSENT FROM ETCO INCORPORATED.

UNCONTROLLED COPY

 THIRD ANGLE PROJECTION TOLERANCES UNLESS OTHERWISE SPECIFIED INCHES: .XX - ±.030 .XXX - ±.015 ANGLES - ±5°	TOOL NO. 0817	Title: FEMALE CONTACT		
		ETCO Incorporated Engineered Products 25 Bellows Street Warwick, R.I. 02888 Phone: (401)467-2400 FAX: (401)467-9230 www.ETCO.com	DO NOT SCALE DWG. Drawn By: S. JOHNSON Chk'd/App'd By:	Date: 11-4-05 Scale: 8:1 Size B
		Dwg. No.: CF276F		