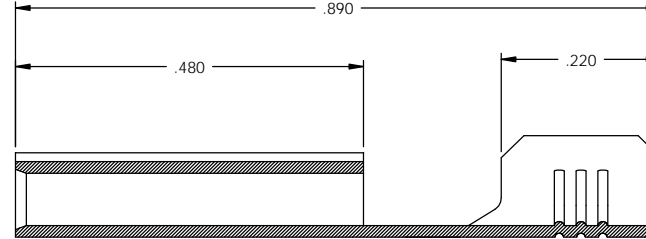
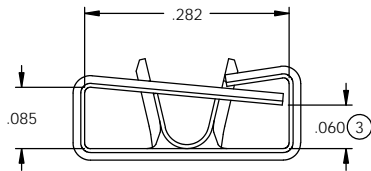
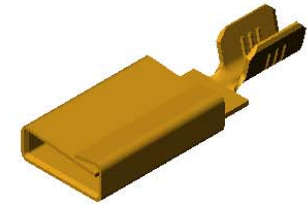
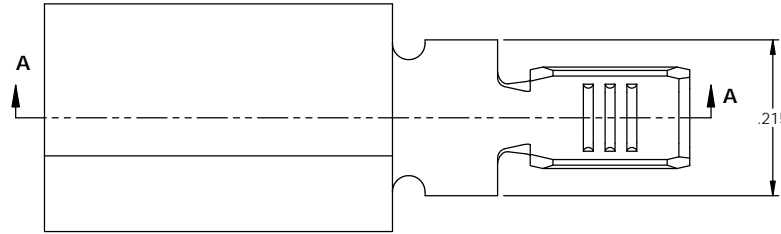


NOTES:

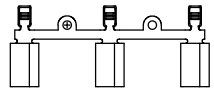
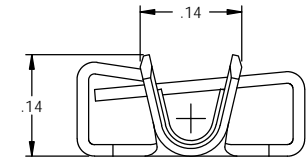
1. MATERIAL: .016 THICK C26000 BRASS
1/2 HARD, ANNEALED TO TEMPER,
PER ETCO METAL CODE 00198.
2. MATERIAL: .016 THICK C51000 PHOSPHOR BRONZE
1/2 HARD, PER ETCO METAL CODE 05354
3. TO MATE WITH A IEC-C20 PIN
4. WIRE RANGE: #14-#18 AWG
5. RETENTION FORCES ARE INDICATED ON THE QUALITY INSPECTION PLAN.

P/C	DESCRIPTION (2)	MATL
14026	CF977-11-C-HB	NOTE 1
14211	CF977-11-C-PB	NOTE 2

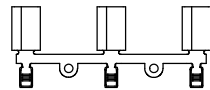
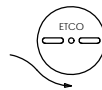
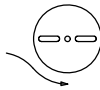
Rev	Description of Change/ SCN#	Date
1	TRANSFERED FROM CP SCJ	8-6-08
2	ECR# 816 SCJ	11-4-11
3	ECR# 1065 SCJ	1-18-12



SECTION A-A
SCALE 6 : 1



DIRECTION EXITING TOOL
EARS UP, TO THE BACK



DIRECTION TOWARDS APPLICATOR
EARS UP, TO THE FRONT

UNCONTROLLED COPY

<p>THIRD ANGLE PROJECTION TOLERANCES UNLESS OTHERWISE SPECIFIED INCHES: .XX - ±.030 .XXX - ±.015 ANGLES: ±5°</p>	<p>TOOL NO. 0821</p>	<p>Title: RECEPTACLE</p>		
		<p>DO NOT SCALE DWG.</p>	<p>Drawn By: S. JOHNSON</p>	<p>Date: 8-6-08</p>
		<p>Chk'd/App'd By:</p>	<p>Scale: 6X</p>	<p>Size: B</p>
		<p>Dwg. No.: CF977-11 cust</p>		