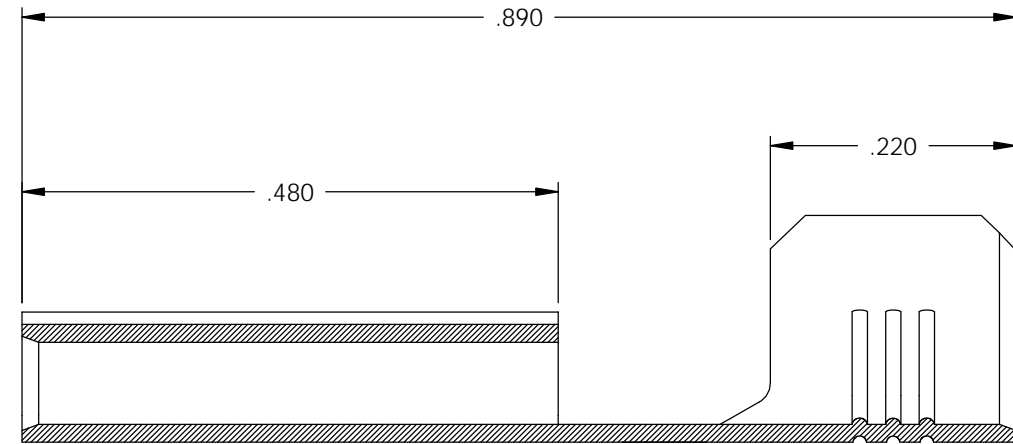
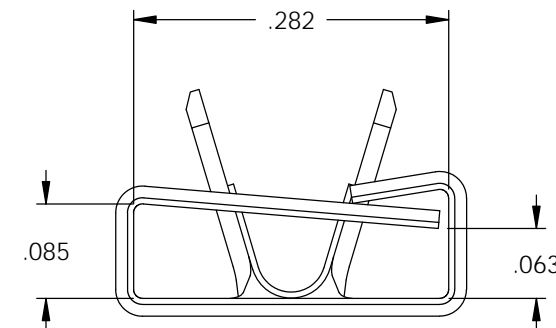
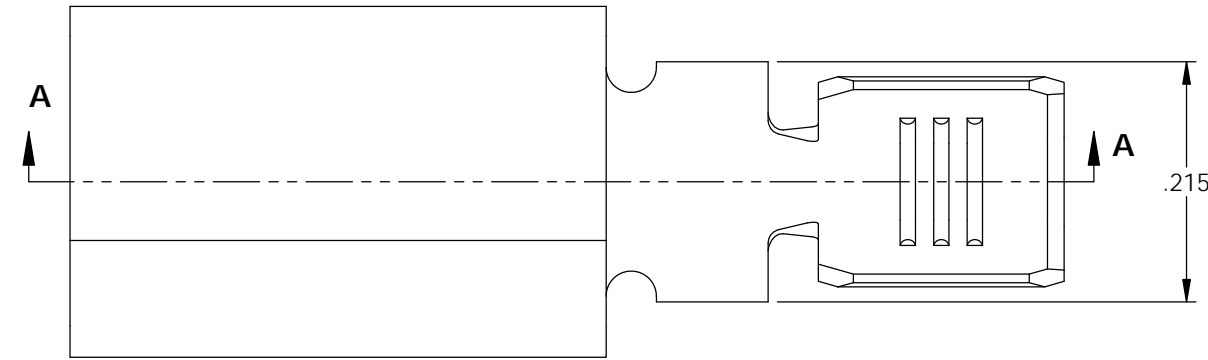
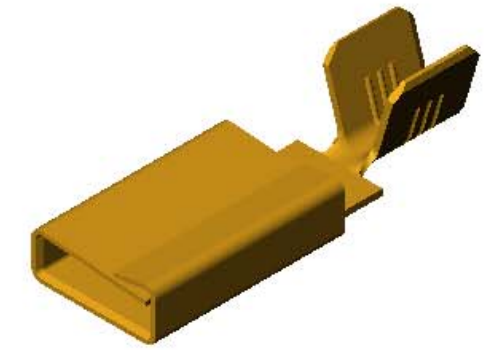


NOTES:

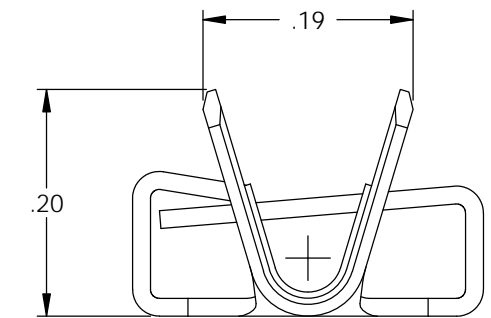
1. MATERIAL: .016 THICK C26000 BRASS  
1/2 HARD, ANNEALED TO TEMPER,  
PER ETCO METAL CODE 00198.
2. MATERIAL: .016 THICK C51000 PHOSPHOR BRONZE  
1/2 HARD, PER ETCO METAL CODE 05354
3. TO MATE WITH A IEC-C20 PIN
4. WIRE RANGE: #10-#12 AWG
5. RETENTION FORCES ARE INDICATED ON THE QUALITY INSPECTION PLAN.

P/C	DESCRIPTION (2)	MAT'L
14156	CF977-14-C-HB	NOTE 1
14212	CF977-14-C-PB	NOTE 2

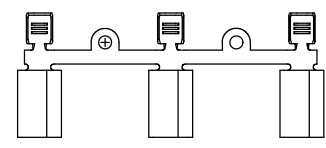
Rev.	Description of Change/ SCN#	Date
1	TRANSFERED FROM CP SCJ	8-6-08
2	ECR# 816 SCJ	11-4-11



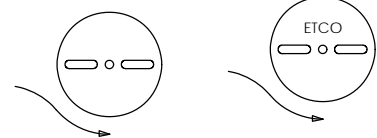
SECTION A-A  
SCALE 6 : 1



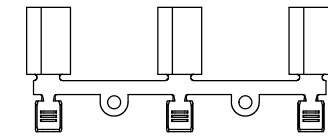
# UNCONTROLLED COPY



DIRECTION EXITING TOOL  
EARS UP, TO THE BACK



DIRECTION TOWARDS APPLICATOR  
EARS UP, TO THE FRONT



THIRD ANGLE PROJECTION  
TOLERANCES UNLESS OTHERWISE SPECIFIED  
INCHES: .XX - ±.030  
.XXX - ±.015  
ANGLES: ±5°

TOOL NO.  
**0821**



Title: **RECEPTACLE**

DO NOT SCALE DWG.

Drawn By: **S. JOHNSON** Date: **8-6-08**

Chk'd/App'd By: \_\_\_\_\_ Scale: **6X** Size: **B**

Dwg. No.: **CF977-14 cust**

ETCO Incorporated  
Engineered Products  
25 Bellows Street  
Warwick, RI 02888  
Phone: (401) 467-2400  
Fax: (401) 467-9230  
www.ETCO.com