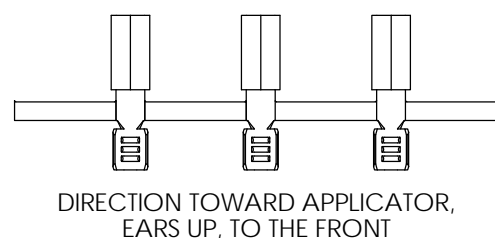
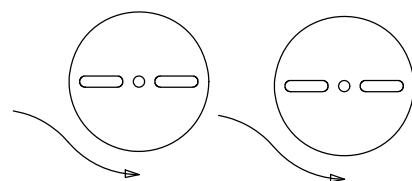
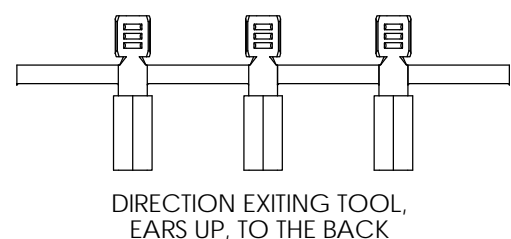
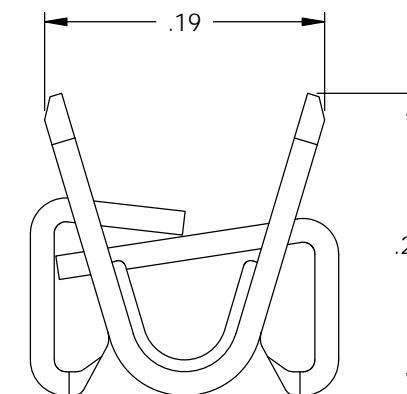
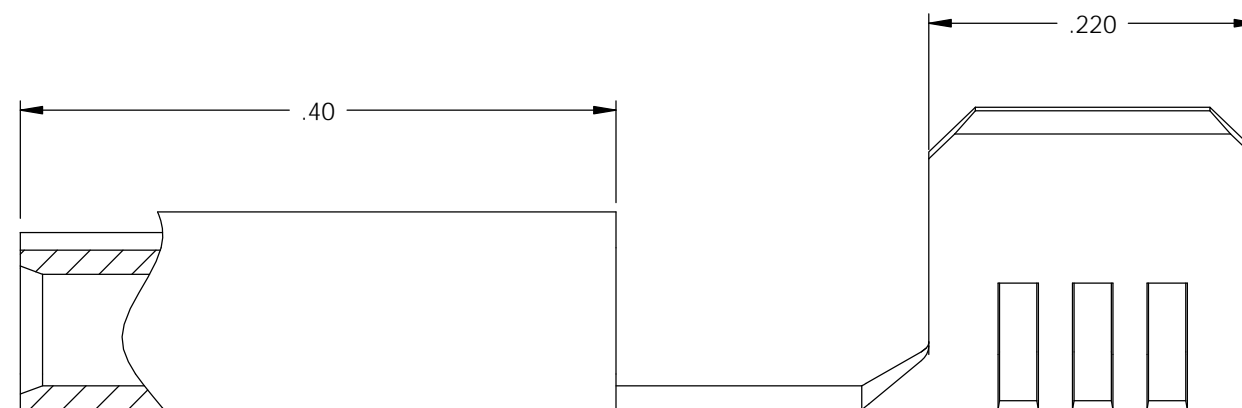
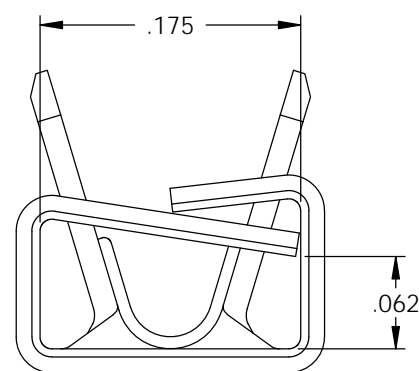
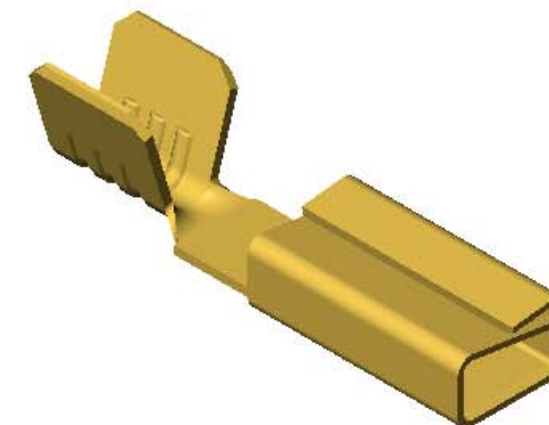
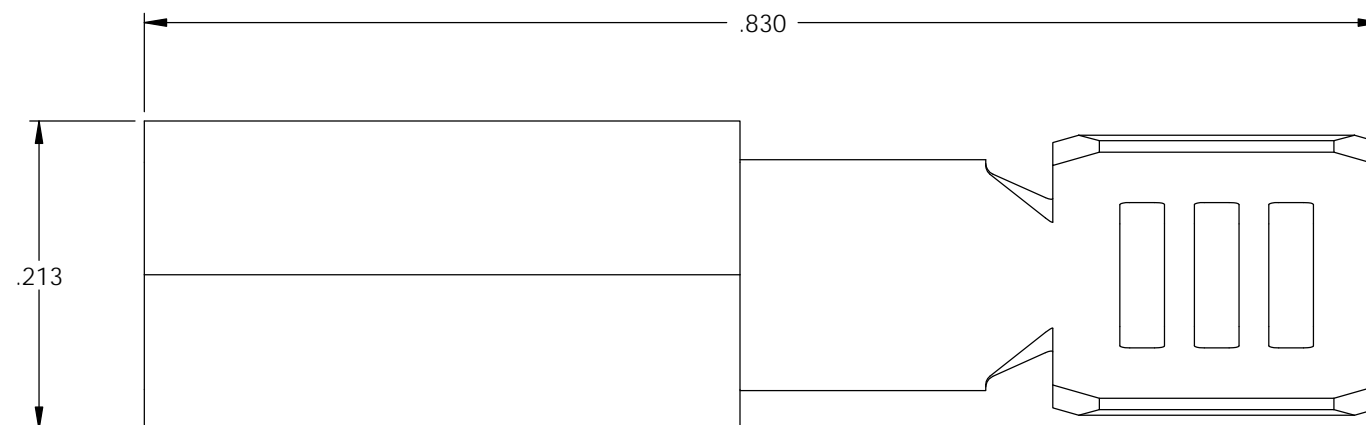


- NOTE:  
 1.) MAT'L: .016 THK., BRASS,  
 #2 TEMPER (HALF HARD), ANNEALED TO TEMPER,  
 PER ETCO METAL CODE NO. 00171.  
 2.) TO MATE WITH A IEC-C14 PIN.  
 3.) RECEPTACLE RETENTION FORCES ARE INDICATED  
 ON THE QUALITY INSPECTION PLAN.  
 4.) WIRE RANGE: 10-12 AWG.

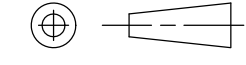

P/C	DESCRIPTION (2)	MAT'L
14084	CF977-12-C-HB	NOTE 1
14124	CF977-5-C-HB	NOTE 1

Rev.	Description of Change/ SCN#	Date
1	REDRAWN ON SOLIDWORKS NO CHANGES SCJ	1-15-04
2	ECR# 816 SCJ	11-7-11



THIS PRINT IS THE PROPERTY OF ETCO INCORPORATED. NO PART OF THIS DESIGN MAY BE USED IN ANY WAY WITHOUT WRITTEN CONSENT FROM ETCO INCORPORATED.

## UNCONTROLLED COPY

 THIRD ANGLE PROJECTION  TOLERANCES UNLESS OTHERWISE SPECIFIED INCHES: .XX - ±.030 .XXX - ±.015  ANGLES - ±5°	<b>TOOL NO.</b> <b>0808</b>  	<b>RECEPTACLE</b> Title:		
		DO NOT SCALE DWG.	Drawn By: S. JOHNSON	Date: 5-13-03
		Chk'd/App'd By:	Scale: 8:1	Size <b>B</b>
		Dwg. No.: <b>CF977-5 &amp; CF977-12</b>		
		ETCO Incorporated Engineered Products 25 Bellows Street Warwick, R.I. 02888 Phone: (401)467-2400 FAX: (401)467-9230 www.ETCO.com		