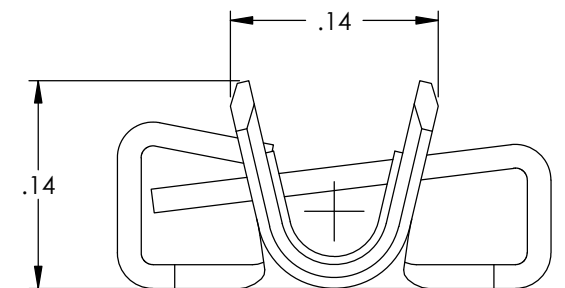
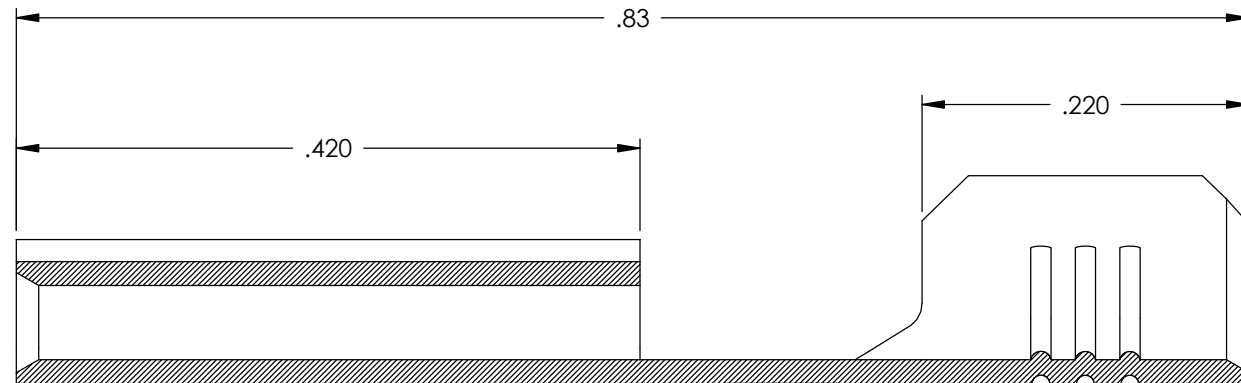
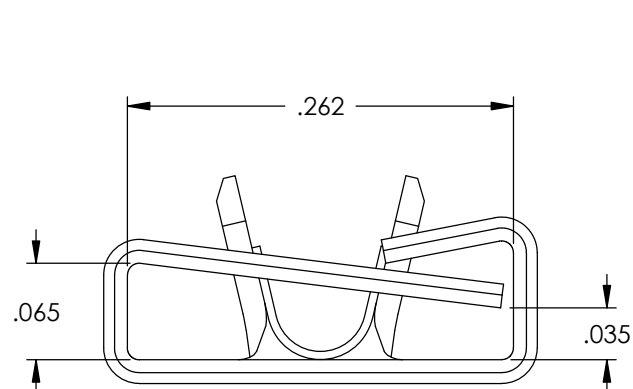
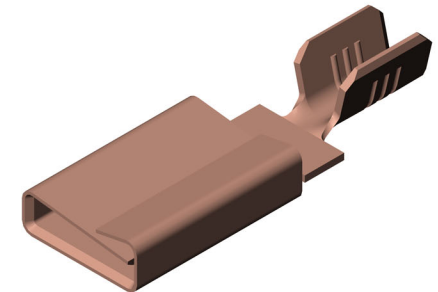
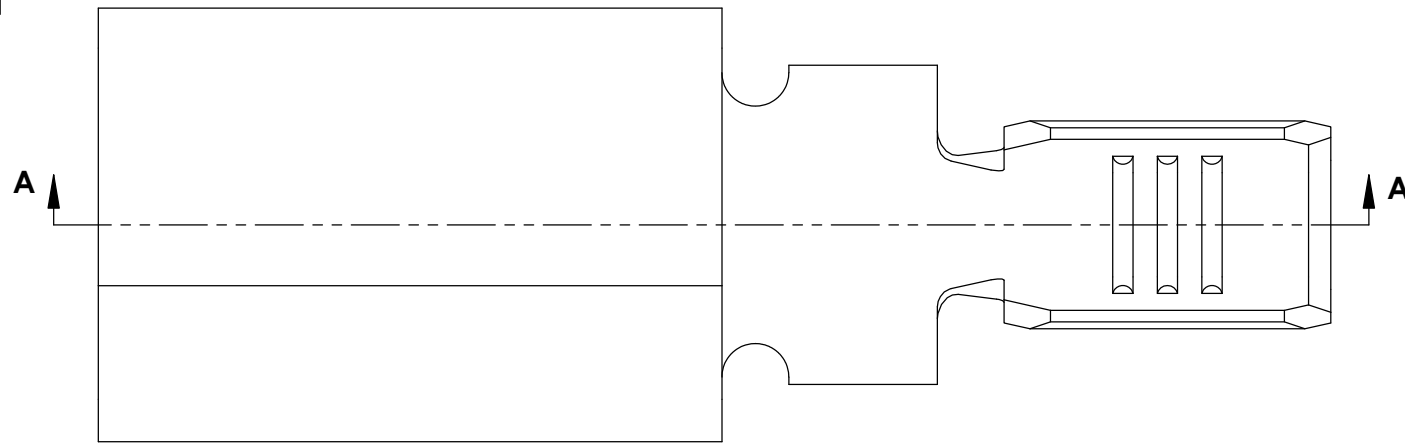


NOTES:

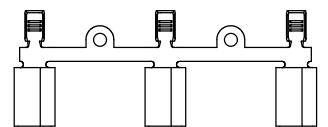
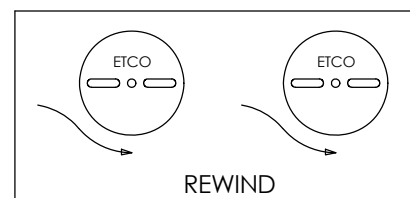
1. MATERIAL: .016 THICK C26000 BRASS
1/2 HARD, ANNEALED TO TEMPER,
PER ETCO METAL CODE 00171.
2. MATERIAL: .016 THICK C51000 PHOSPHOR BRONZE
1/2 HARD, PER ETCO METAL CODE 05353
3. TO MATE WITH .250 X .060 BLADE.
- ② 4. WIRE RANGE: 16-18 AWG
5. RETENTION FORCES ARE INDICATED ON THE QUALITY INSPECTION PLAN.

P/C	DESCRIPTION ①	MAT'L
14140	CF977-6-CRD-HB	NOTE 1
14339	CF977-6-CRD-PB	NOTE 2

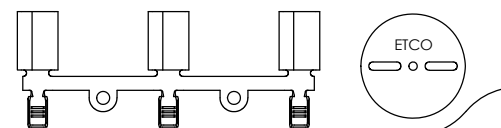
Rev.	Description of Change/ SCN#	Date
-	INITIAL RELEASE SCJ	1-10-08
1	ECR# 816 SCJ	11-4-11
2	ECR# 6782 SCJ	9/06/22



SECTION A-A
SCALE 8 : 1



DIRECTION EXITING TOOL
EARS UP, TO THE BACK



DIRECTION TOWARDS APPLICATOR, FROM RIGHT
EARS UP, TO THE FRONT

THIS PRINT IS THE PROPERTY OF ETCO INCORPORATED. NO PART OF THIS DESIGN MAY BE USED IN ANY WAY WITHOUT WRITTEN CONSENT FROM ETCO INCORPORATED.

UNCONTROLLED COPY

<p>THIRD ANGLE PROJECTION TOLERANCES UNLESS OTHERWISE SPECIFIED INCHES: .XX - ±.030 .XXX - ±.015 ANGLES: ±5°</p>	<p>TOOL NO. 0821</p>	<p>Title: RECEPTACLE</p>		
		<p>DO NOT SCALE DWG.</p>	<p>Drawn By: S.JOHNSON</p>	<p>Date: 1-10-08</p>
<p>ETCO Incorporated Engineered Products 25 Bellows Street Warwick, RI 02888 Phone: (401) 467-2400 Fax: (401) 467-9230 www.ETCO.com</p>		<p>Chk'd/App'd By:</p>	<p>Scale: 8X</p>	<p>Size B</p>
		<p>Dwg. No.:</p>	<p>CF977-6 cust</p>	