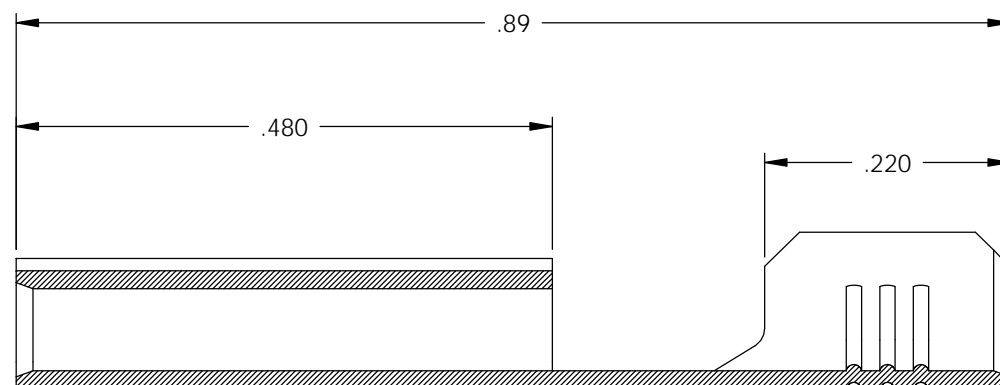
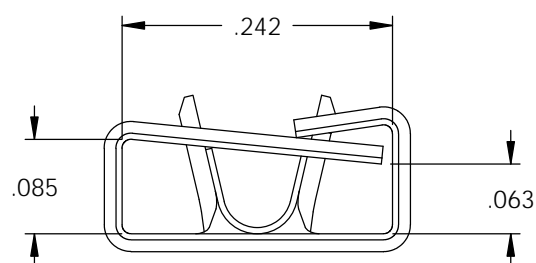
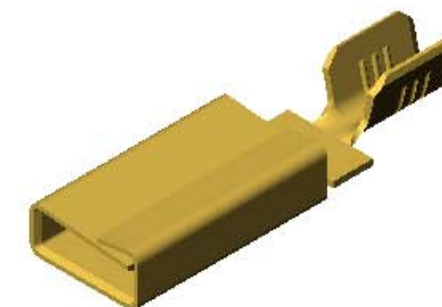
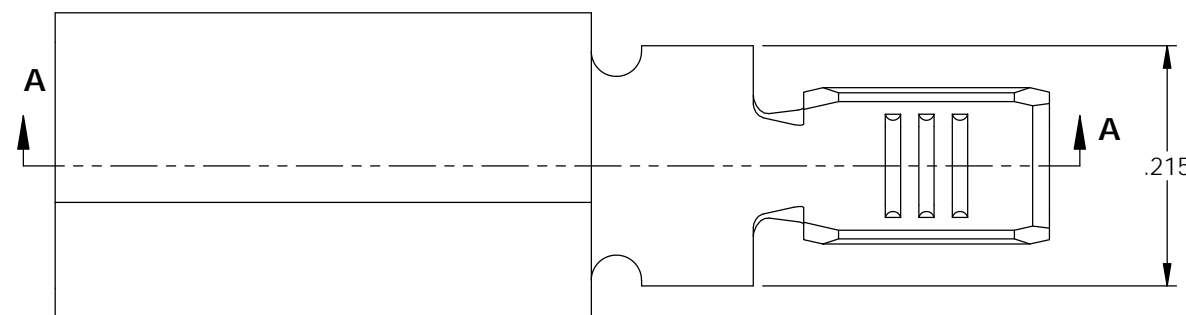


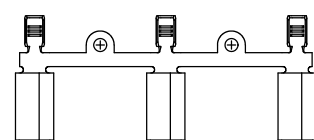
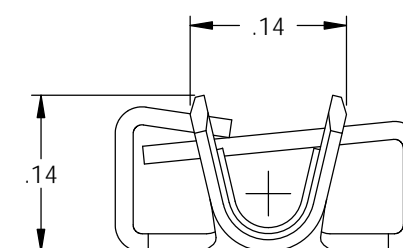
- NOTES:
1. MATERIAL: .016 THICK C26000 BRASS  
1/2 HARD, ANNEALED TO TEMPER,  
PER ETCO METAL CODE 00198.
  2. MATERIAL: .016 THICK C51000 PHOSPHOR BRONZE  
1/2 HARD, PER ETCO METAL CODE 05354
  3. TO MATE WITH A IEC-C20 PIN
  4. WIRE RANGE: #14-#18 AWG
  5. RETENTION FORCES ARE INDICATED ON THE QUALITY INSPECTION PLAN.

P/C	DESCRIPTION (2)	MAT'L
14024	CF977-8-C-HB	NOTE 1
14278	CF977-8-C-PB	NOTE 2

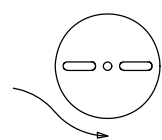
Rev.	Description of Change/ SCN#	Date
1	TRANSFERED FROM CP SCJ	8-5-08
2	ECR# 816 SCJ	11-4-11
3	ECR# 1441 SCJ	6-7-12



SECTION A-A  
SCALE 6 : 1



DIRECTION EXITING TOOL  
EARS UP, TO THE BACK



DIRECTION TOWARDS APPLICATOR  
EARS UP, TO THE FRONT

THIS PRINT IS THE PROPERTY OF ETCO INCORPORATED. NO PART OF THIS DESIGN MAY BE USED IN ANY WAY WITHOUT WRITTEN CONSENT FROM ETCO INCORPORATED.

# UNCONTROLLED COPY

<p>THIRD ANGLE PROJECTION TOLERANCES UNLESS OTHERWISE SPECIFIED INCHES: .XX - ±.030 .XXX - ±.015 ANGLES: ±5°</p>	<p>TOOL NO. <b>0821</b></p>	<p>Title: <b>RECEPTACLE</b></p>		
		<p>DO NOT SCALE DWG.</p>	<p>Drawn By: <b>S.JOHNSON</b></p>	<p>Date: <b>8-5-08</b></p>
<p>ETCO Incorporated Engineered Products 25 Bellows Street Warwick, RI 02888 Phone: (401) 467-2400 Fax: (401) 467-9230 www.ETCO.com</p>		<p>Chk'd/App'd By:</p>	<p>Scale: <b>6X</b></p>	<p>Size <b>B</b></p>
		<p>Dwg. No.: <b>CF977-8 cust</b></p>		