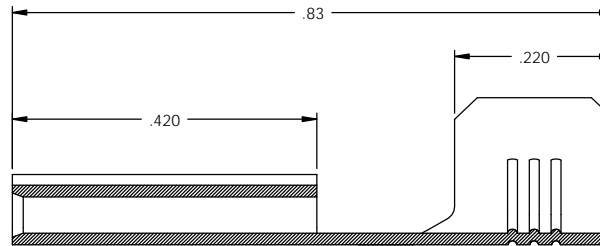
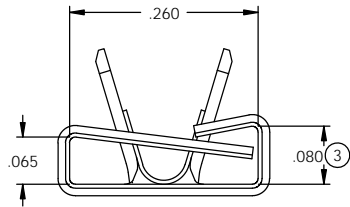
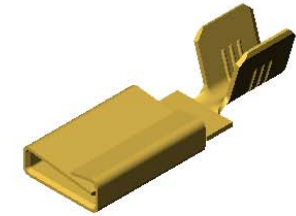
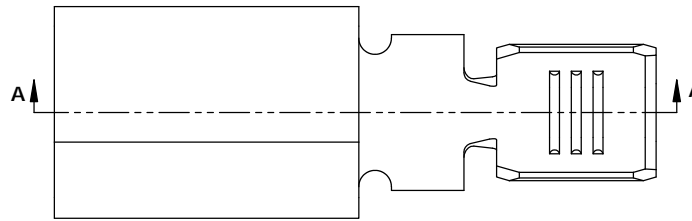


NOTES:

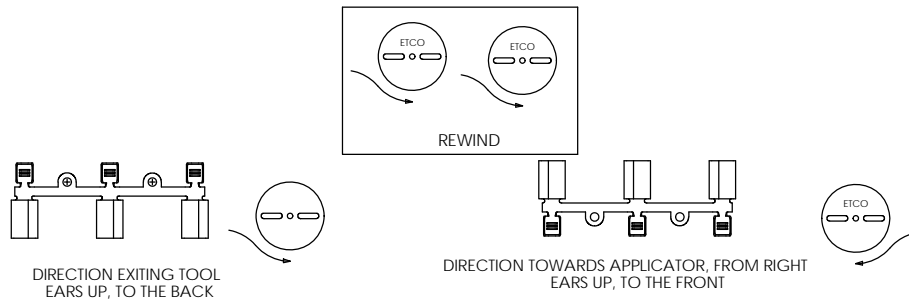
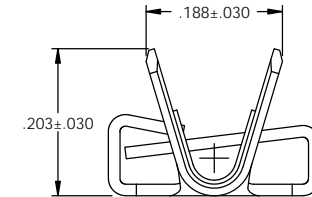
1. MATERIAL: .016 THICK C26000 BRASS  
1/2 HARD, ANNEALED TO TEMPER,  
PER ETCO METAL CODE 00171.
2. MATERIAL: .016 THICK C51000 PHOSPHOR BRONZE  
1/2 HARD, PER ETCO METAL CODE 05353
3. TO MATE WITH .250 X .060 BLADE.
4. WIRE RANGE: #10-#12 AWG
5. RETENTION FORCES ARE INDICATED ON THE QUALITY INSPECTION PLAN.

P/C	DESCRIPTION (4)	MAT'L
14142	CF977-9-CRD-HB	NOTE 1
14344	CF977-9-CRD-PB	NOTE 2

Rev	Description of Change/ SCN#	Date
1	TRANSFER FROM CP TO EP	10-29-04
2	SCN# 102907 SCJ	3-22-05
3	ECR# 632 JMR	4-21-11
4	ECR# 816 SCJ	11-4-11



SECTION A-A  
SCALE 6 : 1



THIS PRINT IS THE PROPERTY OF ETCO INCORPORATED. NO PART OF THIS DESIGN MAY BE USED IN ANY WAY WITHOUT WRITTEN CONSENT FROM ETCO INCORPORATED.

UNCONTROLLED COPY

THIRD ANGLE PROJECTION		TOOL NO. 0821		Title: RECEPTACLE	
TOLERANCES UNLESS OTHERWISE SPECIFIED INCHES: .XX - ±.030 .XXX - ±.015		DO NOT SCALE DWG.		Drawn By: S.JOHNSON	Date: 10-29-04
ANGLES - ±5°		ETCO Incorporated Engineered Products 25 Bellows Street Warwick, R.I. 02888 Phone: (401)467-2400 FAX: (401)467-9230 www.ETCO.com		Chk'd/App'd By:	Scale: 6X Size: B
		ETCO		Dwg. No.: CF977-9-CRD cust	