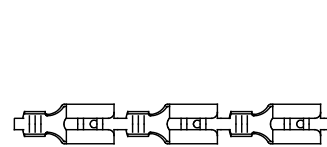
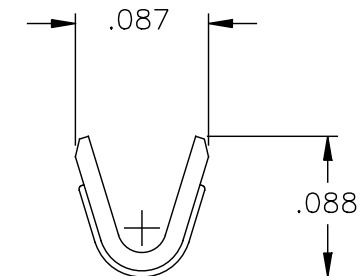
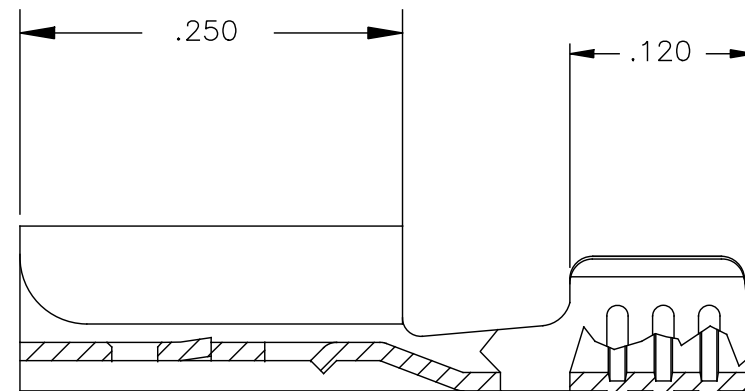
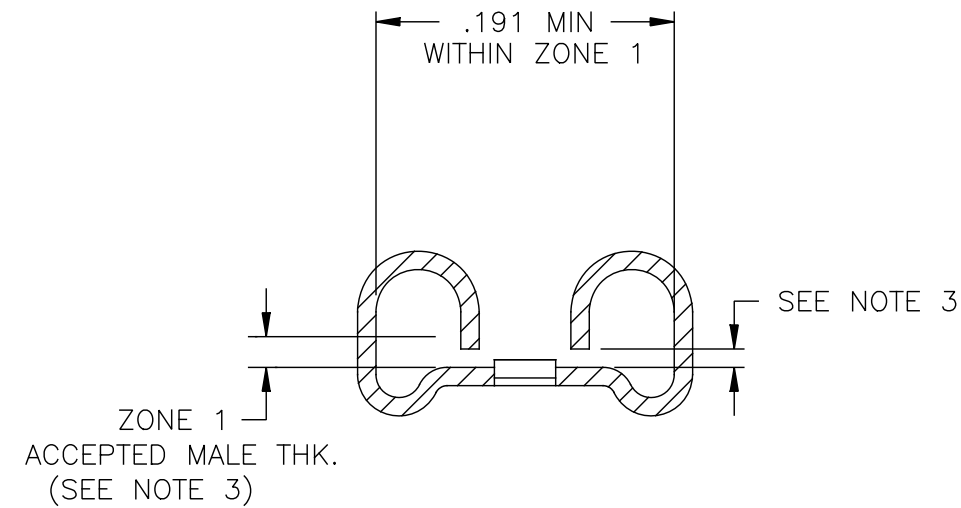
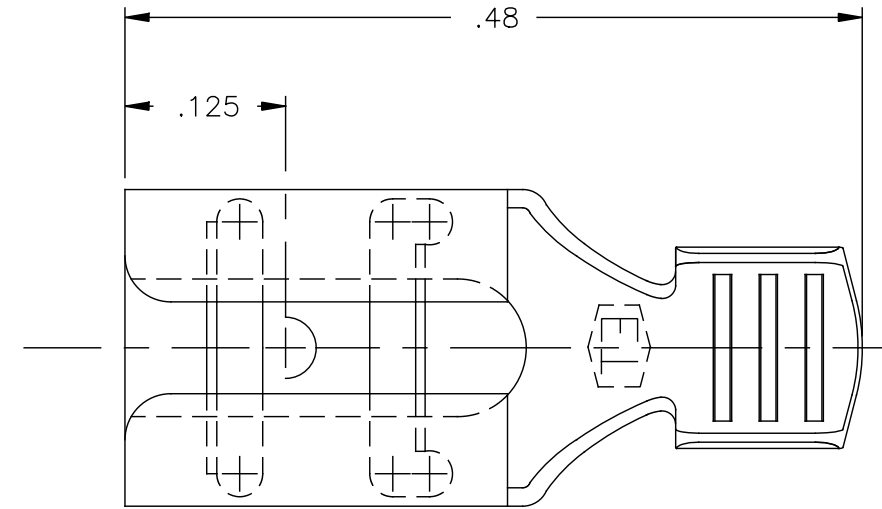


NOTES:

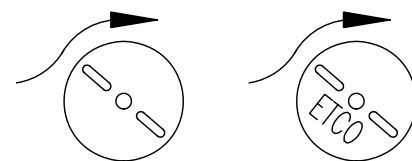
- MAT'L: .012 THK, BRASS, #4 TEMPER (FULL HARD).
PER ETCO METAL CODE NO. 05012.
- MAT'L: .012 THK, PRE-TINNED BRASS, #4 TEMPER (FULL HARD).
PER ETCO METAL CODE NO. 05213.
- MAT'L: .012 THK, PRE-NICKEL PLATED COLD ROLLED STEEL, #2 TEMPER (HALF HARD).
PER ETCO METAL CODE NO. 03068.
- PARTS MAY BE COATED WITH A LIGHT FILM OF LUBRICATION USED IN THE MANUFACTURING PROCESS.
- ACCEPTED MALE: .020 X .187 NEMA STANDARD MALE.
- WIRE RANGE: 22-20 AWG

Rev.	Description of Change/ SCN#	Date
1	COMPLETED P/C LIST SCJ	7-24-08

P/C	DESCRIPTION	MAT'L
07361	D152E-HB	NOTE 1
07362	D152E-THB	NOTE 2
07363	D152E-NPS	NOTE 3
07364	D152E-1-NPS	NOTE 3



DIRECTION EXITING TOOL,
EARS UP, TO THE LEFT



FULL VIEW
REFERENCE ONLY



DIRECTION TOWARD APPLICATOR,
EARS UP, TO THE RIGHT

UNCONTROLLED COPY

<p>THIRD ANGLE PROJECTION</p>	<p>TOOL NO. 0578</p>	<p>Title: FEMALE DISCONNECT</p>		
		<p>DO NOT SCALE DWG.</p>	<p>Drawn By: P. McCormick</p>	<p>Date: 9-30-96</p>
<p>TOLERANCES UNLESS OTHERWISE SPECIFIED</p> <p>.XX - ±.030 .XXX - ±.015 Angles - ±5°</p>		<p>ETCO Incorporated Engineered Products 25 Bellows Street Warwick, R.I. 02888 Phone: (401)467-2400 FAX: (401)467-9230</p>	<p>Checked:</p>	<p>Scale: 8:1</p>
		<p>Dwg. No.: D152E & C- D152E-1</p>		

THIS PRINT IS THE PROPERTY OF ETCO INCORPORATED. NO PART OF THIS DESIGN MAY BE USED IN ANY WAY WITHOUT WRITTEN CONSENT FROM ETCO INCORPORATED.

CUSTOMER DRAWING