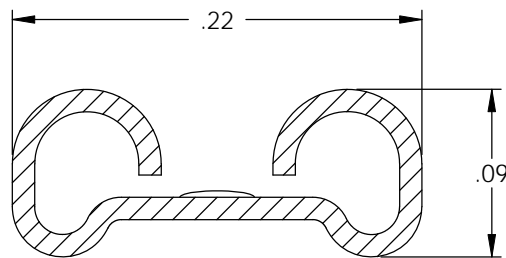
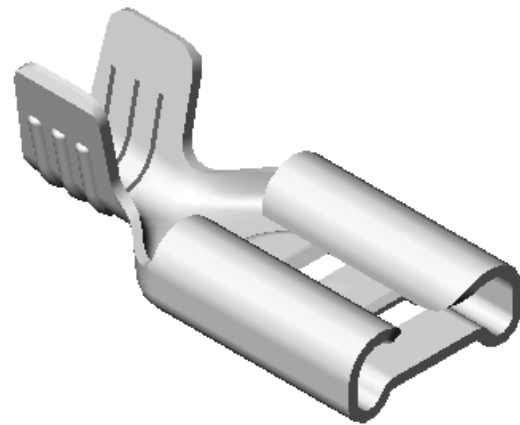
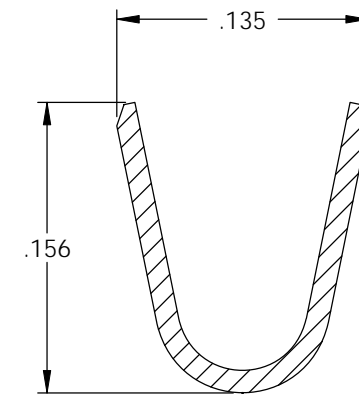
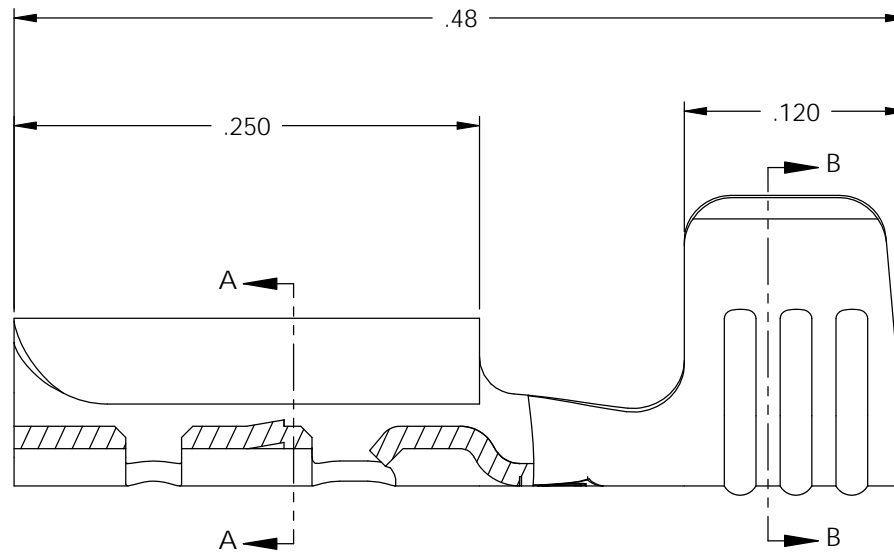
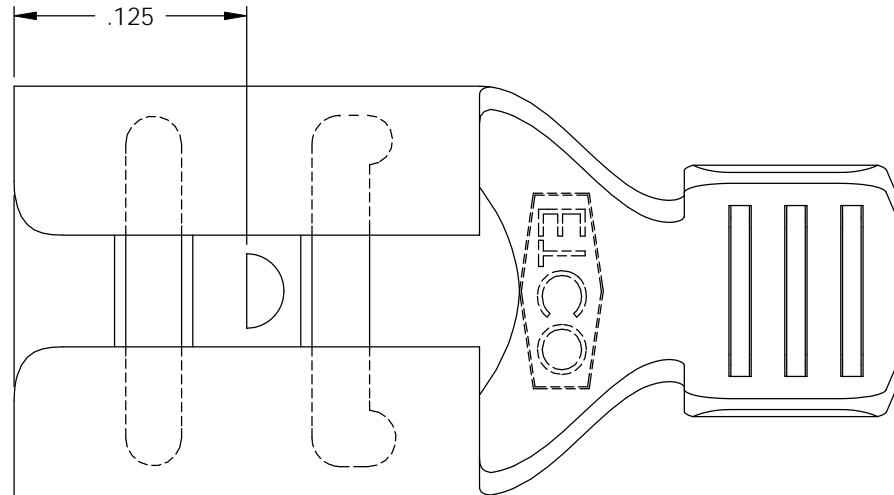


NOTES:

1. MATERIAL: .012 THICK, BRASS, #4 TEMPER (FULL HARD), PER ETCO METAL CODE 05012.
2. MATERIAL: .012 THICK, PRE-TINNED BRASS, #4 TEMPER (FULL HARD), PER ETCO METAL CODE 05213.
3. MATERIAL: .012 THICK, NICKEL PLATED STEEL, #2 TEMPER (1/2 HARD), PER ETCO METAL CODE 03068.
4. PARTS MAY BE COATED WITH A LIGHT FILM OF LUBRICATION USED IN THE MANUFACTURING PROCESS.
5. INSERTION/WITHDRAWAL FORCES ARE INDICATED ON THE QUALITY INSPECTION PLAN.
6. ACCEPTED MALE: .020 X .187 NEMA STANDARD MALE.
7. WIRE RANGE: 18-14 AWG.



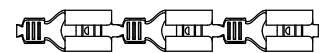
SECTION A-A
SCALE 10 : 1



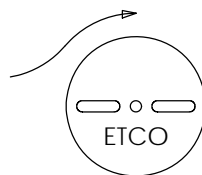
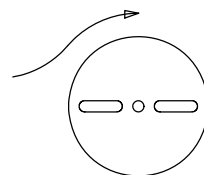
SECTION B-B
SCALE 10 : 1

P/C	DESCRIPTION	MAT'L	UL	UL	UL
07381	D153E-HB	NOTE 1	X		X
07383	D153E-THB	NOTE 2	X		X
07384	D153E-NPS	NOTE 3		X	

Rev.	Description of Change/ SCN#	Date
1	SCN# 140314 SCJ ORG.ENG.DWG.DATE: 12-14-81	1-8-08



DIRECTION EXITING TOOL,
EARS UP, TO THE LEFT



DIRECTION TOWARD APPLICATOR,
EARS UP, TO THE RIGHT

UNCONTROLLED COPY

<p>THIRD ANGLE PROJECTION TOLERANCES UNLESS OTHERWISE SPECIFIED INCHES: .XX - ±.030 .XXX - ±.015 ANGLES: ±5°</p>	<p>TOOL NO. 0577</p>	<p>Title: .020 X .187 FEMALE DISCONNECT</p>		
		<p>DO NOT SCALE DWG.</p>	<p>Drawn By: S.JOHNSON</p>	<p>Date: 1-8-08</p>
<p>ETCO Incorporated Engineered Products 25 Bellows Street Warwick, RI 02888 Phone: (401) 467-2400 Fax: (401) 467-9230 www.ETCO.com</p>		<p>Chk'd/App'd By:</p>	<p>Scale: 10X</p>	<p>Size B</p>
		<p>Dwg. No.: D153E cust</p>		