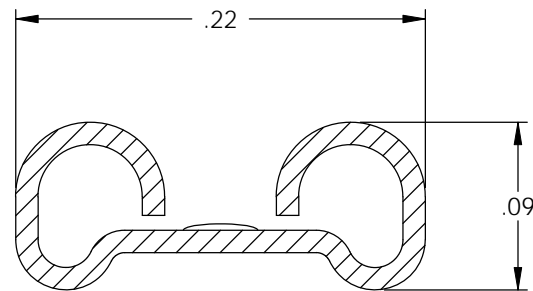
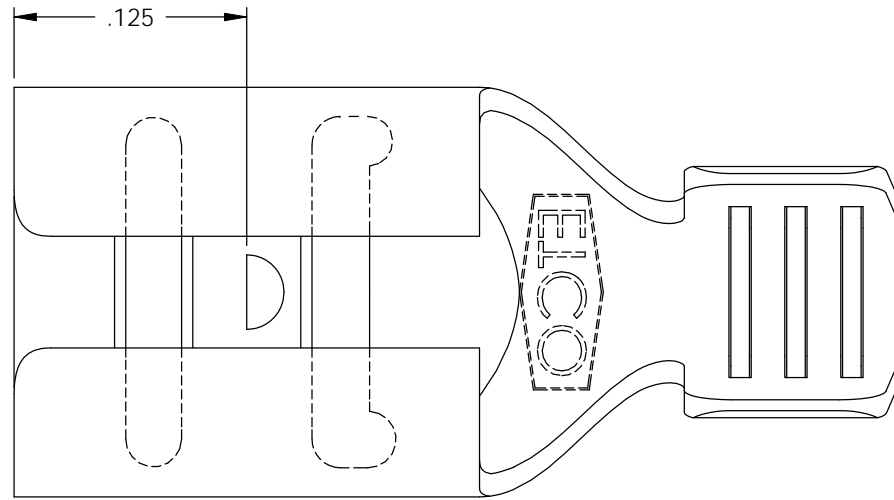
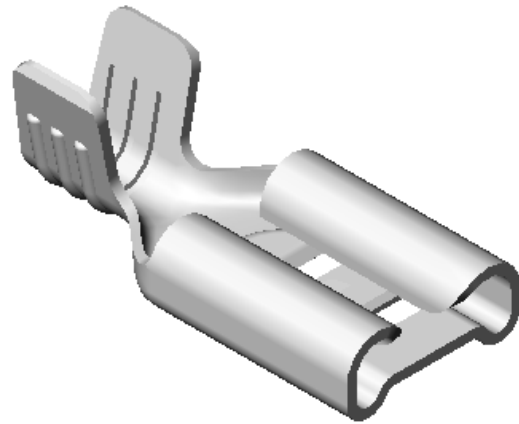


NOTES:

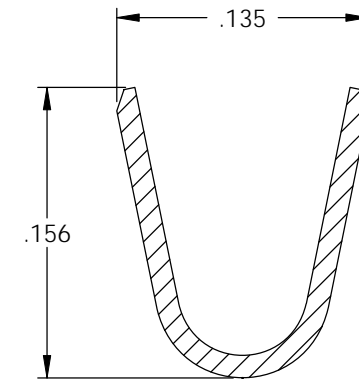
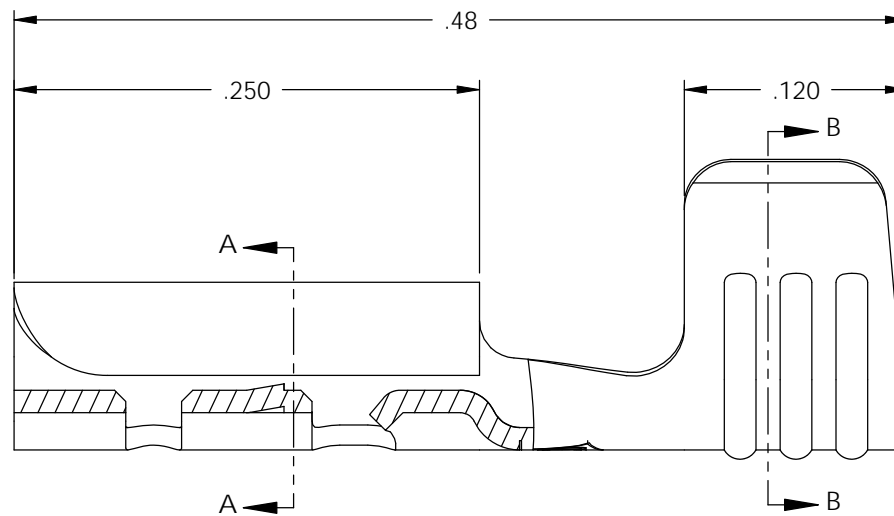
1. MATERIAL: .012 THICK, PRE-TINNED BRASS, #4 TEMPER (FULL HARD), PER ETCO METAL CODE 05213.
2. MATERIAL: .012 THICK, NICKEL PLATED STEEL, #2 TEMPER (1/2 HARD), PER ETCO METAL CODE 03068.
3. PARTS MAY BE COATED WITH A LIGHT FILM OF LUBRICATION USED IN THE MANUFACTURING PROCESS.
4. INSERTION/WITHDRAWAL FORCES ARE INDICATED ON THE QUALITY INSPECTION PLAN.
5. ACCEPTED MALE: .015 X .187 MALE.
6. WIRE RANGE: 18-14 AWG.

P/C	DESCRIPTION	MAT'L
07391	D155E-NPS	NOTE 2
07392	D155E-THB	NOTE 1

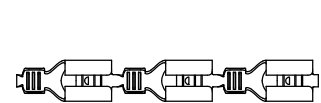
Rev.	Description of Change/ SCN#	Date
1	SCN# 140314 SCJ ORG.ENG.DWG.DATE: 4-21-94	1-8-08



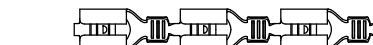
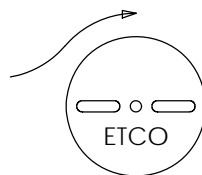
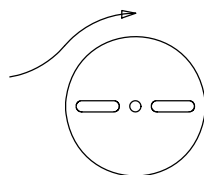
SECTION A-A  
SCALE 10 : 1



SECTION B-B  
SCALE 10 : 1



DIRECTION EXITING TOOL,  
EARS UP, TO THE LEFT



DIRECTION TOWARD APPLICATOR,  
EARS UP, TO THE RIGHT

THIS PRINT IS THE PROPERTY OF ETCO INCORPORATED. NO PART OF THIS DESIGN MAY BE USED IN ANY WAY WITHOUT WRITTEN CONSENT FROM ETCO INCORPORATED.

# UNCONTROLLED COPY

<p>THIRD ANGLE PROJECTION TOLERANCES UNLESS OTHERWISE SPECIFIED INCHES: .XX - ±.030 .XXX - ±.015 ANGLES: ±5°</p>	<p>TOOL NO. <b>0577</b></p>	<p>Title: <b>.015 X .187 FEMALE DISCONNECT</b></p>		
		<p>DO NOT SCALE DWG.</p>	<p>Drawn By: <b>S.JOHNSON</b></p>	<p>Date: <b>1-8-08</b></p>
<p>ETCO Incorporated Engineered Products 25 Bellows Street Warwick, RI 02888 Phone: (401) 467-2400 Fax: (401) 467-9230 www.ETCO.com</p>		<p>Chk'd/App'd By:</p>	<p>Scale: <b>10X</b></p>	<p>Size <b>B</b></p>
		<p>Dwg. No.: <b>D155E cust</b></p>		